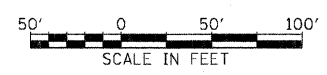
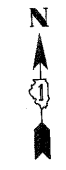
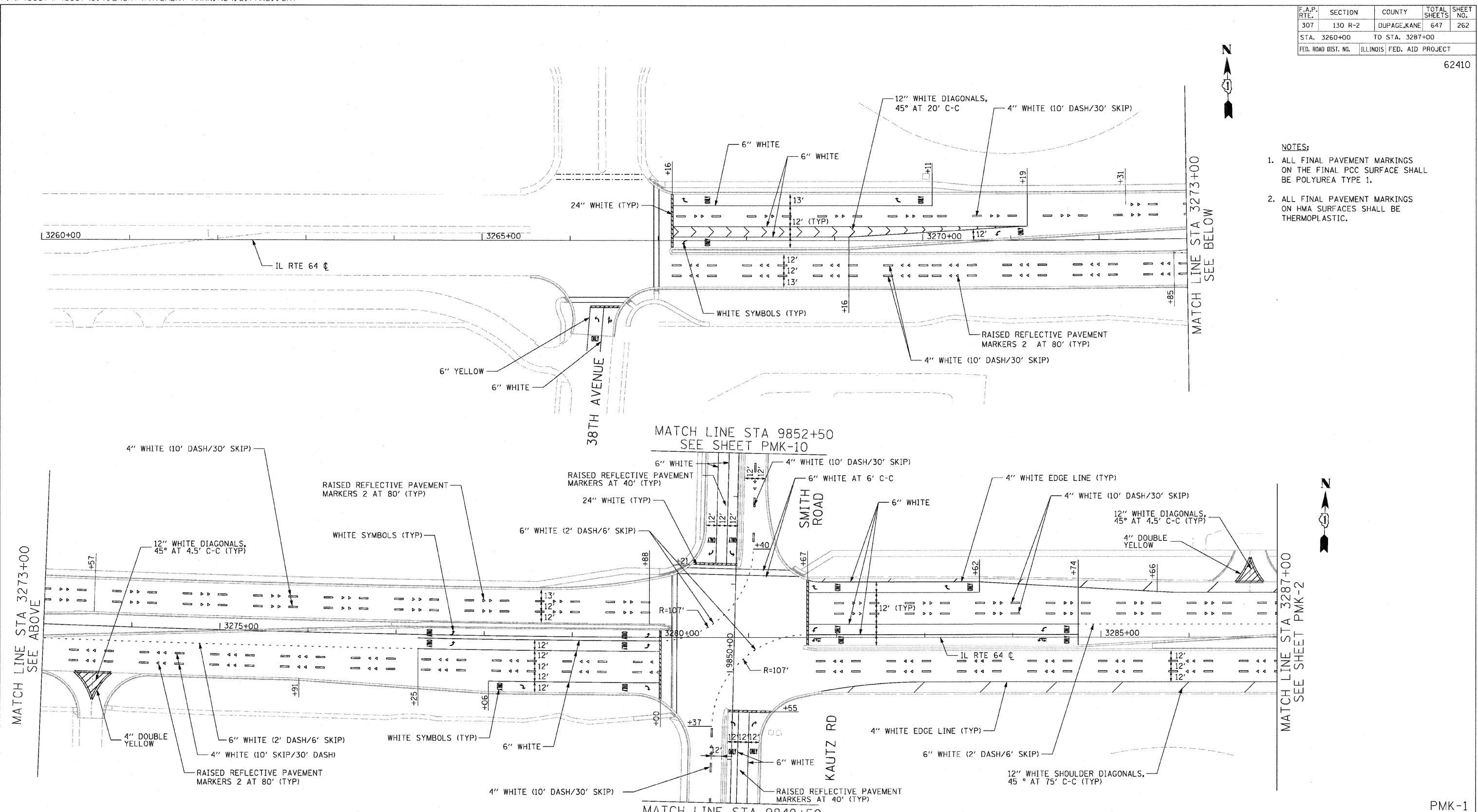


F.A.P. RTE.	SECTION	COUNTY	TOTAL SHEETS	SHEET NO.
307	130 R-2	DUPAGE, KANE	647	262
STA. 3260+00 TO STA. 3287+00				
FED. ROAD DIST. NO.		ILLINOIS FED. AID PROJECT		

62410

**NOTES:**

1. ALL FINAL PAVEMENT MARKINGS ON THE FINAL PCC SURFACE SHALL BE POLYUREA TYPE 1.
2. ALL FINAL PAVEMENT MARKINGS ON HMA SURFACES SHALL BE THERMOPLASTIC.



REVISIONS	
NAME	DATE

ILLINOIS DEPARTMENT OF TRANSPORTATION  
 F.A.P. ROUTE 307 (ILLINOIS ROUTE 64)  
**PAVEMENT MARKING PLAN**  
 IL ROUTE 64  
 STA. 3260+00 TO STA. 3287+00

SCALE: VERT: NONE  
 HORIZ: 1"=50'  
 DATE: MAY 13, 2011

DRAWN BY: JWM  
 CHECKED BY: RMG

PMK-1