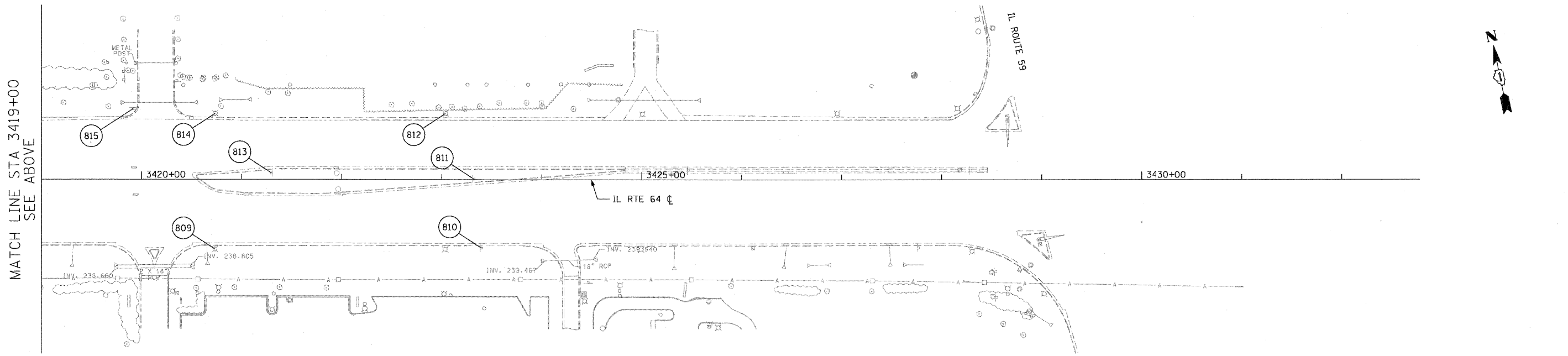
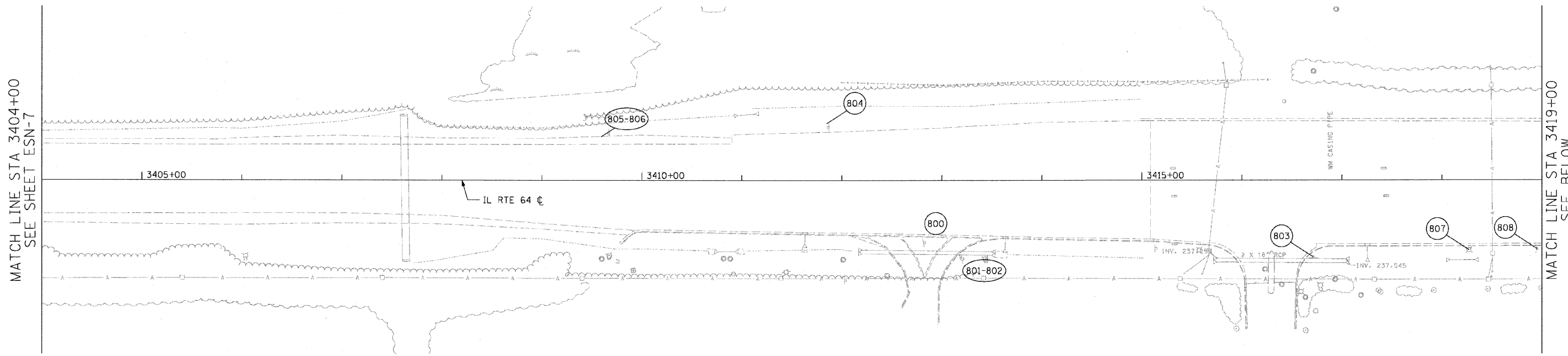


F.A.P. RTE.	SECTION	COUNTY	TOTAL SHEETS	SHEET NO.
307	130 R-2	DUPAGE,KANE	647	285
STA. 3404+00		TO STA. 3421+69.87		
FED. ROAD DIST. NO.		ILLINOIS FED. AID PROJECT		

62410



MATCH LINE STA 3404+00
SEE SHEET ESN-7

MATCH LINE STA 3419+00
SEE BELOW

MATCH LINE STA 3419+00
SEE ABOVE

NOTE:
 1. SHEET CALLOUTS ARE DETAILED IN THE EXISTING SIGN SCHEDULE. SEE SHEET ESNS-3



REVISIONS	
NAME	DATE

ILLINOIS DEPARTMENT OF TRANSPORTATION
 F.A.P. ROUTE 307 (ILLINOIS ROUTE 64)
EXISTING SIGNING PLAN
 IL ROUTE 64
 STA. 3404+00 TO STA. 3422+54

SCALE: VERT: NONE
 HORIZ: 1"=50'
 DATE: MAY 13, 2011

DRAWN BY: JWM
 CHECKED BY: RMG

ESN-8