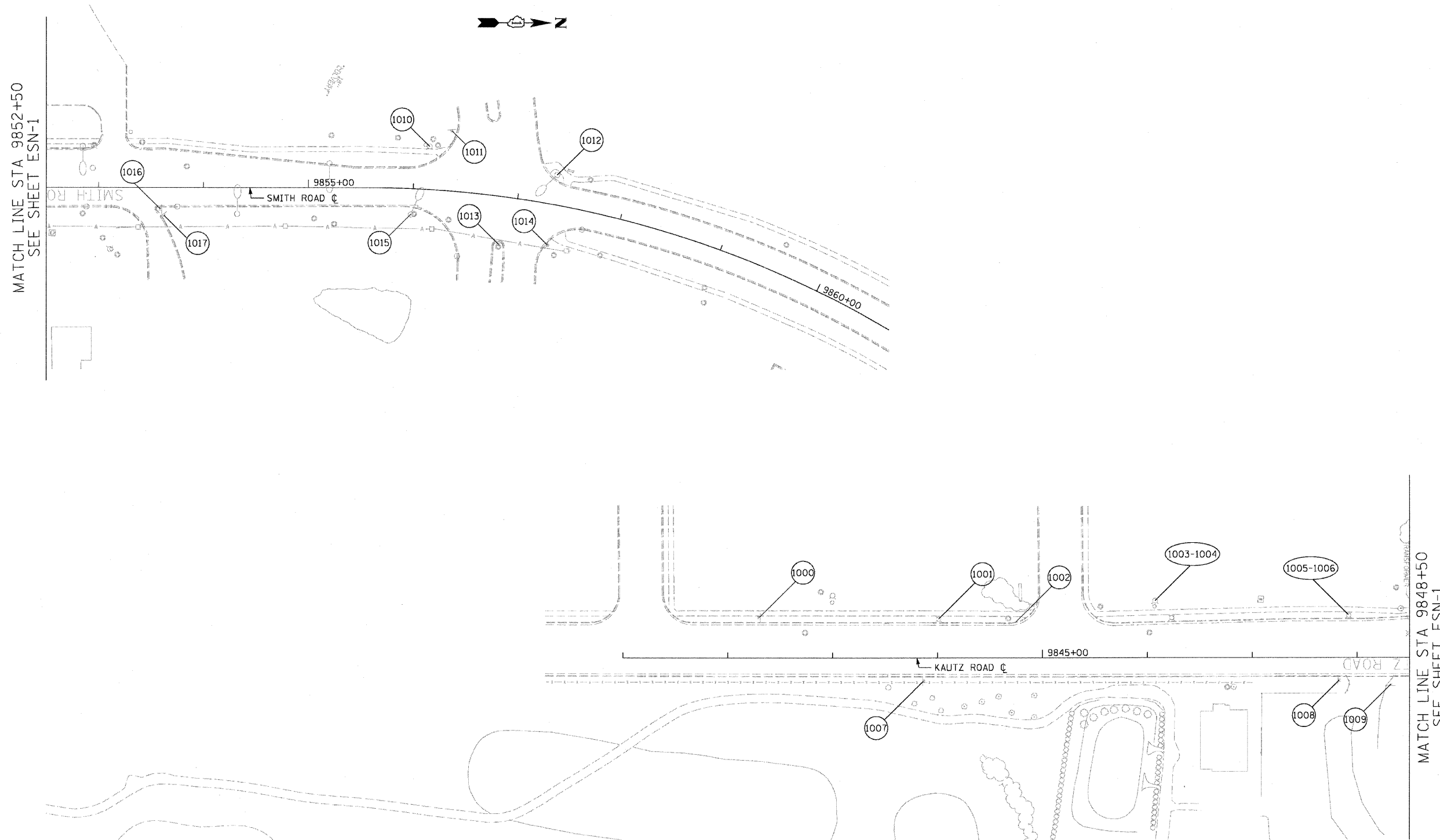


F.A.P. RTE.	SECTION	COUNTY	TOTAL SHEETS	SHEET NO.
307	130 R-2	DUPAGE, KANE	647	287
STA. 9842+50		TO STA. 9856+14		
FED. ROAD DIST. NO.		ILLINOIS FED. AID PROJECT		

62410



NOTE:

1. SHEET CALLOUTS ARE DETAILED IN THE EXISTING SIGN SCHEDULE. SEE SHEET ESNS-4

ESN-10



REVISIONS	
NAME	DATE

ILLINOIS DEPARTMENT OF TRANSPORTATION
 F.A.P. ROUTE 307 (ILLINOIS ROUTE 64)
 EXISTING SIGNING
 SMITH / KAUTZ ROAD
 STA. 9840+94 TO STA. 9856+83

SCALE: VERT: NONE
 HORIZ: 1"=50'
 DATE: MAY 13, 2011

DRAWN BY: JWM
 CHECKED BY: RMG