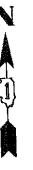
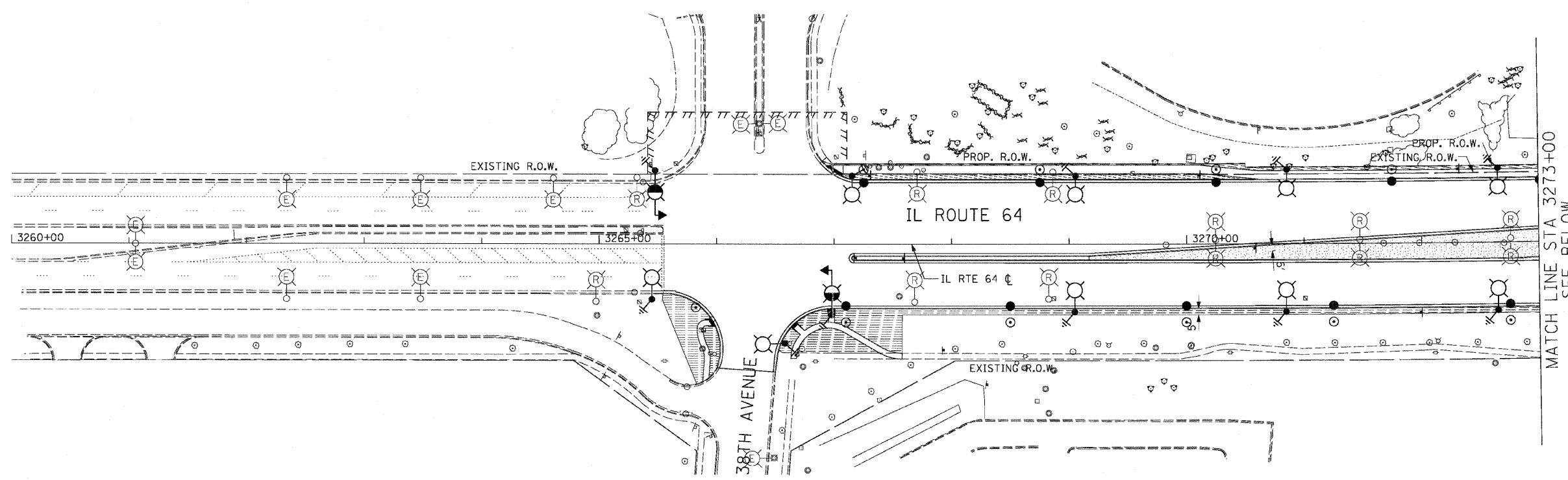
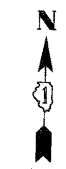
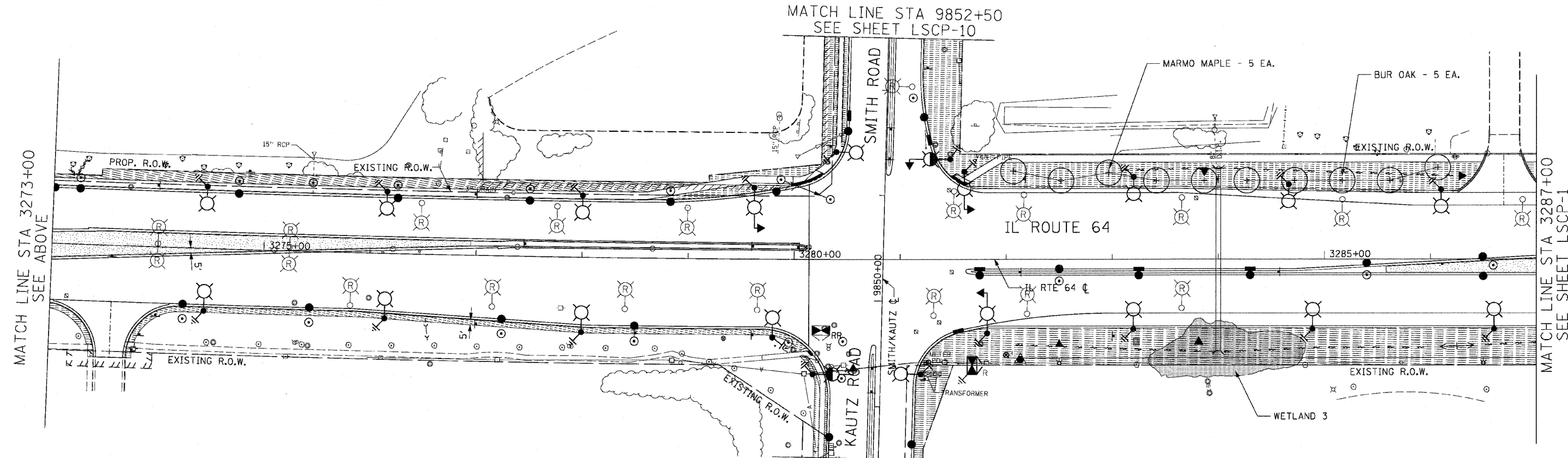


F.A.P. RTE.	SECTION	COUNTY	TOTAL SHEETS	SHEET NO.
307	130 R-2	DUPAGE, KANE	647	310
STA. 3260+00		TO STA. 3287+00		
FED. ROAD DIST. NO.		ILLINOIS FED. AID PROJECT		

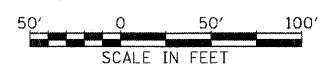
62410



- LEGEND:**
- FURNISHING AND PLACING TOPSOIL, 4" AND SEEDING CLASS 2A EROSION CONTROL BLANKET
 - FURNISHING AND PLACING TOPSOIL, 4" AND SODDING, SALT TOLERANT EROSION CONTROL BLANKET
 - FURNISHING AND PLACING TOPSOIL, 24" AND SEEDING CLASS 2A EROSION CONTROL BLANKET
 - COMPOST, 2" SEEDING CLASS 4 (PRAIRIE GRASS) EROSION CONTROL BLANKET
 - COMPOST, 2" SEEDING CLASS 4B (MODIFIED) WETLAND MIX EROSION CONTROL BLANKET
 - SELECTIVE MOWING STAKE WITH SIGN



MATCH LINE STA 3273+00 SEE ABOVE (left)
 MATCH LINE STA 3287+00 SEE SHEET LSCP-1 (right)



REVISIONS	
NAME	DATE
S. LIPKIE	06/11

ILLINOIS DEPARTMENT OF TRANSPORTATION
 F.A.P. ROUTE 307 (ILLINOIS ROUTE 64)

LANDSCAPING PLAN
 IL ROUTE 64
 STA. 3260+00 TO STA. 3287+00

SCALE: VERT: NONE
 HORIZ: 1"=50'
 DATE: MAY 13, 2011

DRAWN BY: RMG
 CHECKED BY: JWM

LSCP-1