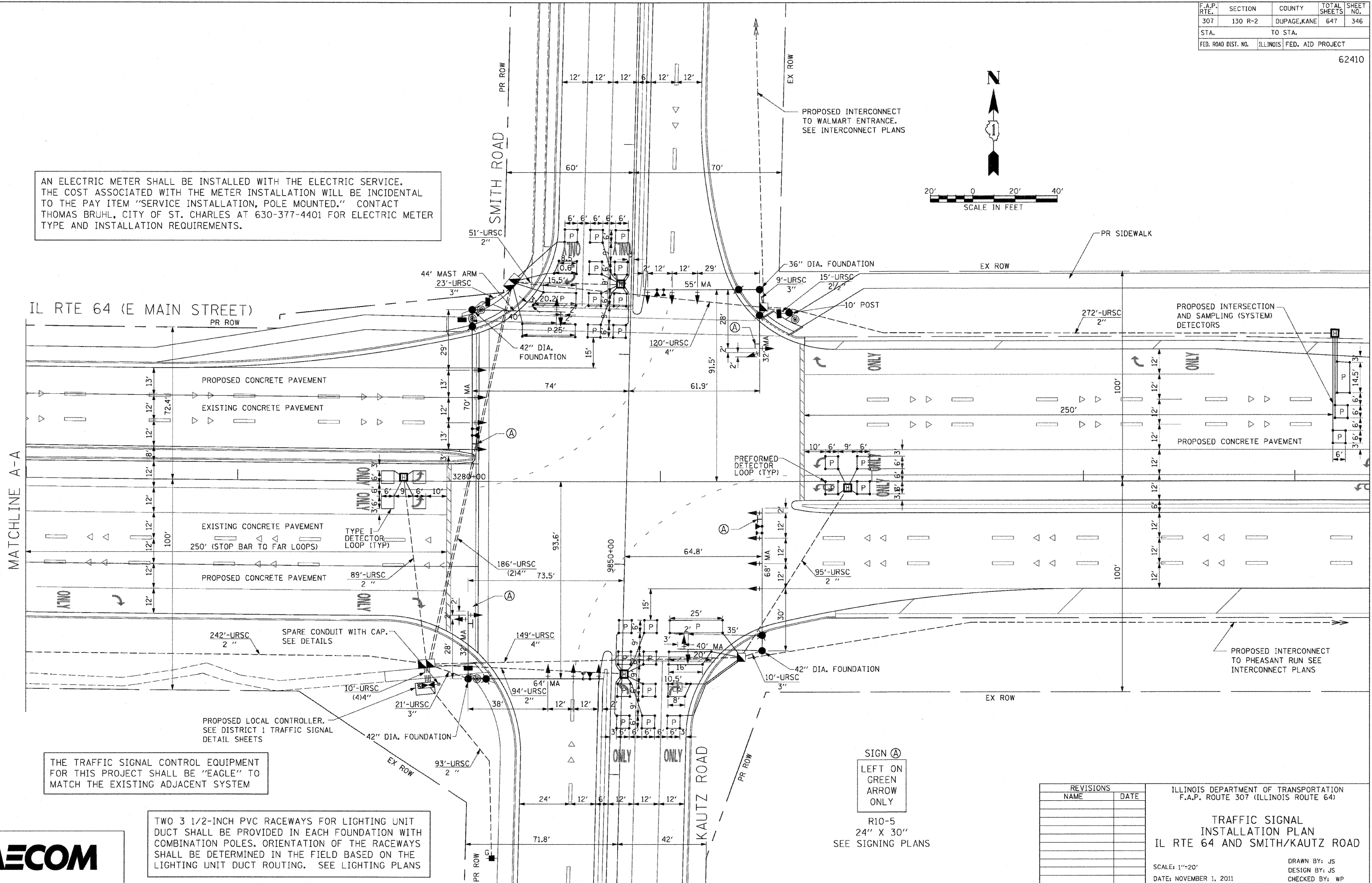
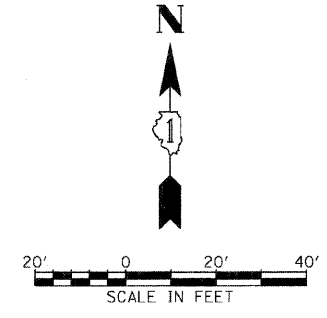


F.A.P. RTE.	SECTION	COUNTY	TOTAL SHEETS	SHEET NO.
307	130 R-2	DUPAGE, KANE	647	346
STA.		TO STA.		
FED. ROAD DIST. NO.		ILLINOIS FED. AID PROJECT		

62410

AN ELECTRIC METER SHALL BE INSTALLED WITH THE ELECTRIC SERVICE. THE COST ASSOCIATED WITH THE METER INSTALLATION WILL BE INCIDENTAL TO THE PAY ITEM "SERVICE INSTALLATION, POLE MOUNTED." CONTACT THOMAS BRUHL, CITY OF ST. CHARLES AT 630-377-4401 FOR ELECTRIC METER TYPE AND INSTALLATION REQUIREMENTS.



THE TRAFFIC SIGNAL CONTROL EQUIPMENT FOR THIS PROJECT SHALL BE "EAGLE" TO MATCH THE EXISTING ADJACENT SYSTEM

TWO 3 1/2-INCH PVC RACEWAYS FOR LIGHTING UNIT DUCT SHALL BE PROVIDED IN EACH FOUNDATION WITH COMBINATION POLES. ORIENTATION OF THE RACEWAYS SHALL BE DETERMINED IN THE FIELD BASED ON THE LIGHTING UNIT DUCT ROUTING. SEE LIGHTING PLANS

SIGN (A)  
 LEFT ON GREEN  
 ARROW  
 ONLY

R10-5  
 24" X 30"  
 SEE SIGNING PLANS

REVISIONS	
NAME	DATE

ILLINOIS DEPARTMENT OF TRANSPORTATION  
 F.A.P. ROUTE 307 (ILLINOIS ROUTE 64)

**TRAFFIC SIGNAL  
 INSTALLATION PLAN**  
 IL RTE 64 AND SMITH/KAUTZ ROAD

SCALE: 1"=20'  
 DATE: NOVEMBER 1, 2011

DRAWN BY: JS  
 DESIGN BY: JS  
 CHECKED BY: WP

