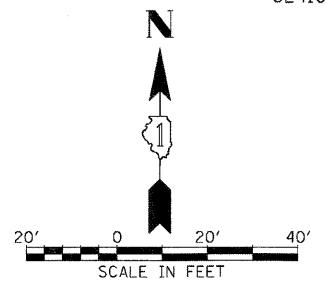
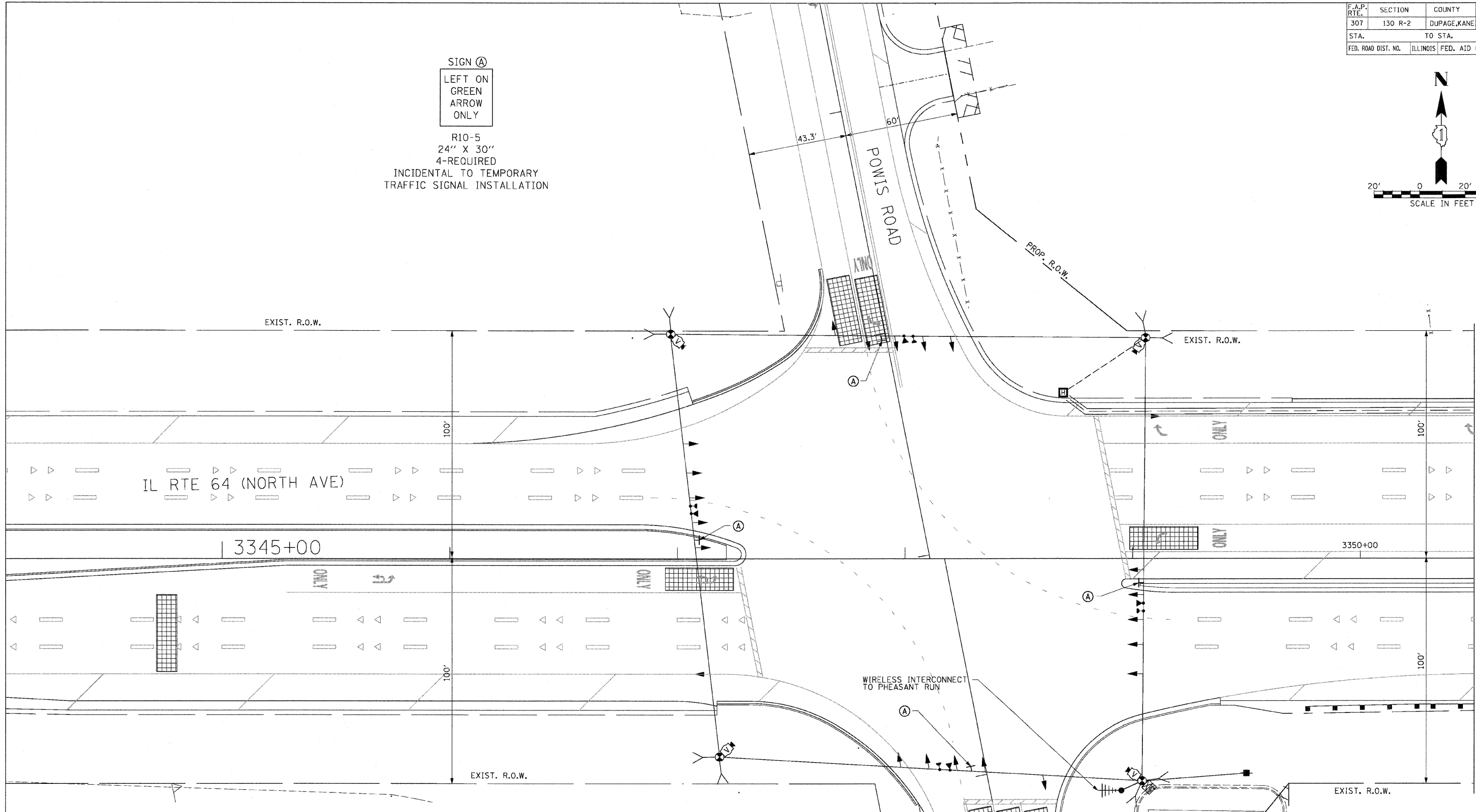


F.A.P. RTE.	SECTION	COUNTY	TOTAL SHEETS	SHEET NO.
307	130 R-2	DUPAGE, KANE	647	372A
STA. TO STA.		FED. ROAD DIST. NO. ILLINOIS FED. AID PROJECT		
		62410		



SIGN (A)  
 LEFT ON GREEN ARROW ONLY  
 R10-5  
 24" X 30"  
 4-REQUIRED  
 INCIDENTAL TO TEMPORARY TRAFFIC SIGNAL INSTALLATION



THE TRAFFIC SIGNAL CONTROL EQUIPMENT FOR THIS PROJECT SHALL BE "EAGLE" TO MATCH THE EXISTING ADJACENT SYSTEM.

THE ADVANCED EVP DETECTOR (SEE SHEET 6 OF 15) SHALL BE INSTALLED AND OPERATIONAL PRIOR TO TURN-ON OF STAGE 2 TEMPORARY TRAFFIC SIGNALS. SEE TRAFFIC SIGNAL PLANS FOR INSTALLATION DETAILS.



REVISIONS	NAME	DATE

ILLINOIS DEPARTMENT OF TRANSPORTATION  
 F.A.P. ROUTE 307 (ILLINOIS ROUTE 64)  
**TEMPORARY TRAFFIC SIGNAL INSTALLATION AND REMOVAL PLAN**  
 IL ROUTE 64 AND POWIS ROAD  
 POST-CONSTRUCTION  
 SCALE: VERT:    DATE: NOVEMBER 1, 2011  
 HORIZ: 1"=20'  
 DRAWN BY: JS  
 CHECKED BY: WP