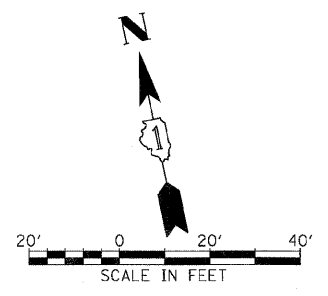


F.A.P. RTE.	SECTION	COUNTY	TOTAL SHEETS	SHEET NO.
307	130 R-2	DUPAGE, KANE	647	378
STA.	TO STA.			
FED. ROAD DIST. NO.	ILLINOIS	FED. AID PROJECT		

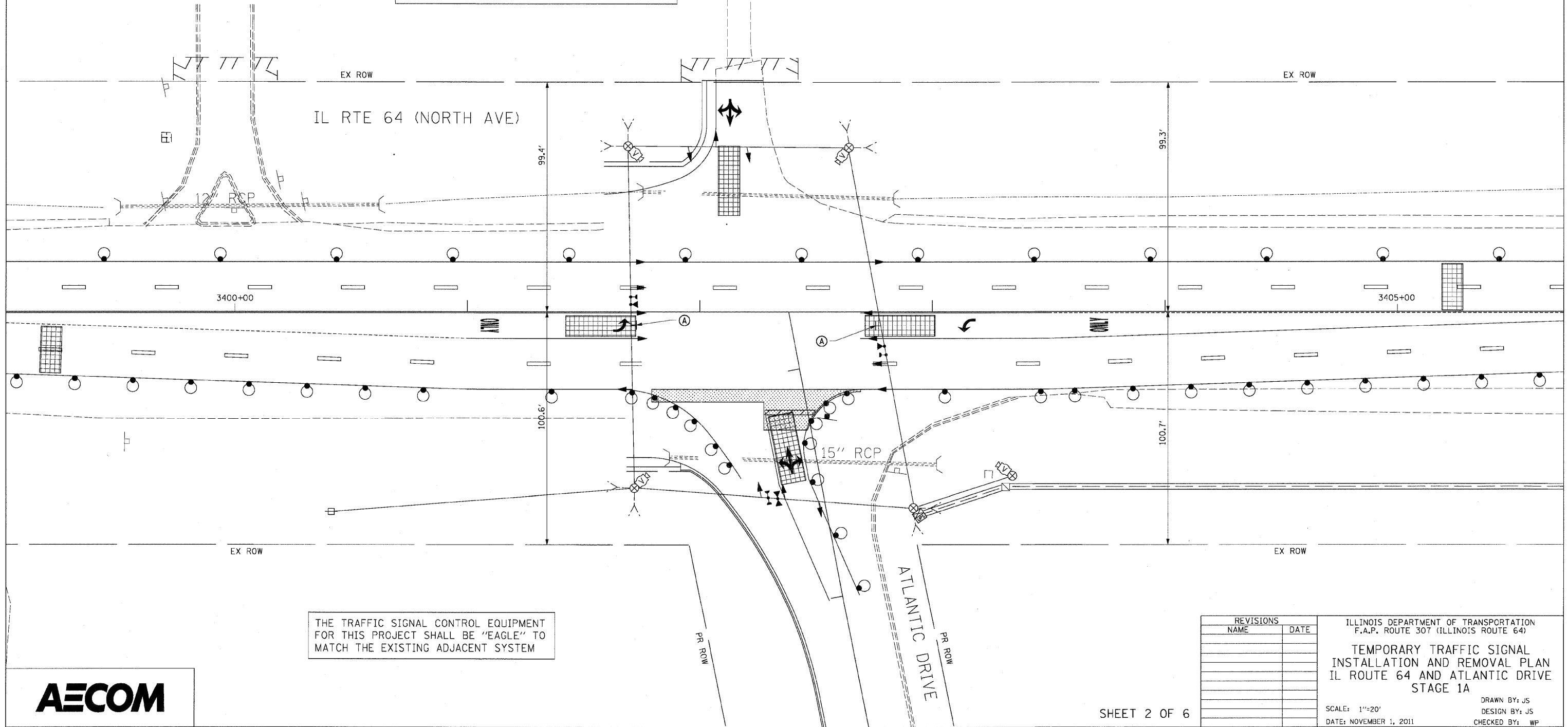
62410

SIGN (A)  
 LEFT ON GREEN ARROW ONLY  
 R10-5  
 24" X 30"  
 2-REQUIRED  
 INCIDENTAL TO TEMPORARY TRAFFIC SIGNAL INSTALLATION



STOP BARS SHALL NOT BE INSTALLED UNTIL THE DAY THE TRAFFIC SIGNALS ARE ACTIVATED FOR THIS STAGE.

IL RTE 64 (NORTH AVE)



THE TRAFFIC SIGNAL CONTROL EQUIPMENT FOR THIS PROJECT SHALL BE "EAGLE" TO MATCH THE EXISTING ADJACENT SYSTEM

REVISIONS	
NAME	DATE

ILLINOIS DEPARTMENT OF TRANSPORTATION  
 F.A.P. ROUTE 307 (ILLINOIS ROUTE 64)  
 TEMPORARY TRAFFIC SIGNAL INSTALLATION AND REMOVAL PLAN  
 IL ROUTE 64 AND ATLANTIC DRIVE  
 STAGE 1A  
 SCALE: 1"=20'  
 DATE: NOVEMBER 1, 2011  
 DRAWN BY: JS  
 DESIGN BY: JS  
 CHECKED BY: WP

