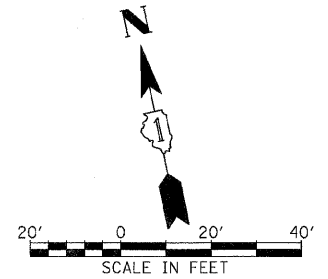
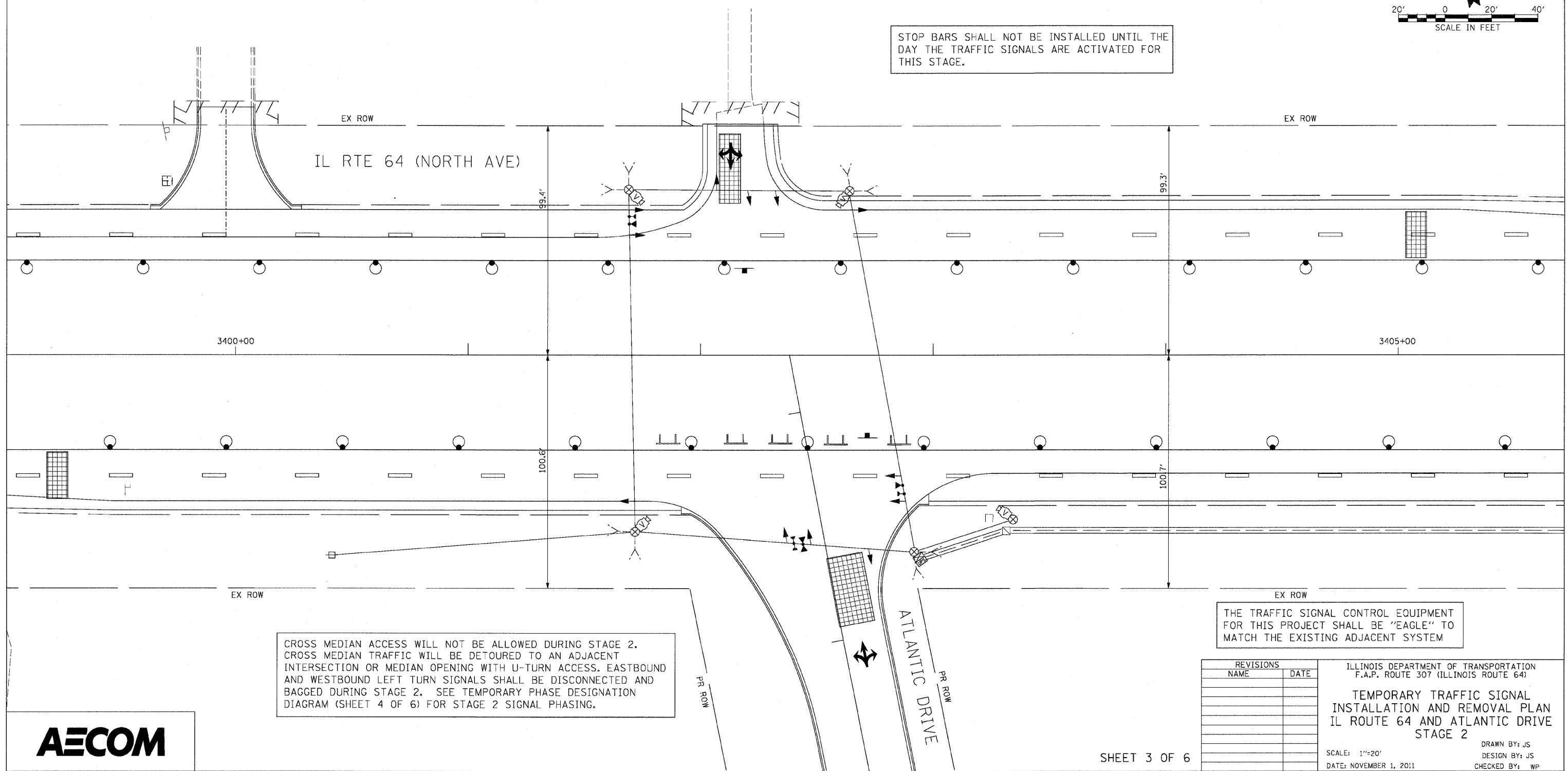


| | | | | |
|---------------------|----------|------------------|--------------|-----------|
| F.A.P. RTE. | SECTION | COUNTY | TOTAL SHEETS | SHEET NO. |
| 307 | 130 R-2 | DUPAGE, KANE | 647 | 379 |
| STA. | TO STA. | | | |
| FED. ROAD DIST. NO. | ILLINOIS | FED. AID PROJECT | | |

62410



STOP BARS SHALL NOT BE INSTALLED UNTIL THE DAY THE TRAFFIC SIGNALS ARE ACTIVATED FOR THIS STAGE.



CROSS MEDIAN ACCESS WILL NOT BE ALLOWED DURING STAGE 2. CROSS MEDIAN TRAFFIC WILL BE DETOURED TO AN ADJACENT INTERSECTION OR MEDIAN OPENING WITH U-TURN ACCESS. EASTBOUND AND WESTBOUND LEFT TURN SIGNALS SHALL BE DISCONNECTED AND BAGGED DURING STAGE 2. SEE TEMPORARY PHASE DESIGNATION DIAGRAM (SHEET 4 OF 6) FOR STAGE 2 SIGNAL PHASING.

THE TRAFFIC SIGNAL CONTROL EQUIPMENT FOR THIS PROJECT SHALL BE "EAGLE" TO MATCH THE EXISTING ADJACENT SYSTEM

| REVISIONS | |
|-----------|------|
| NAME | DATE |
| | |
| | |
| | |
| | |
| | |
| | |
| | |
| | |
| | |
| | |

ILLINOIS DEPARTMENT OF TRANSPORTATION
 F.A.P. ROUTE 307 (ILLINOIS ROUTE 64)
 TEMPORARY TRAFFIC SIGNAL
 INSTALLATION AND REMOVAL PLAN
 IL ROUTE 64 AND ATLANTIC DRIVE
 STAGE 2
 SCALE: 1"=20'
 DATE: NOVEMBER 1, 2011
 DRAWN BY: JS
 DESIGN BY: JS
 CHECKED BY: WP

