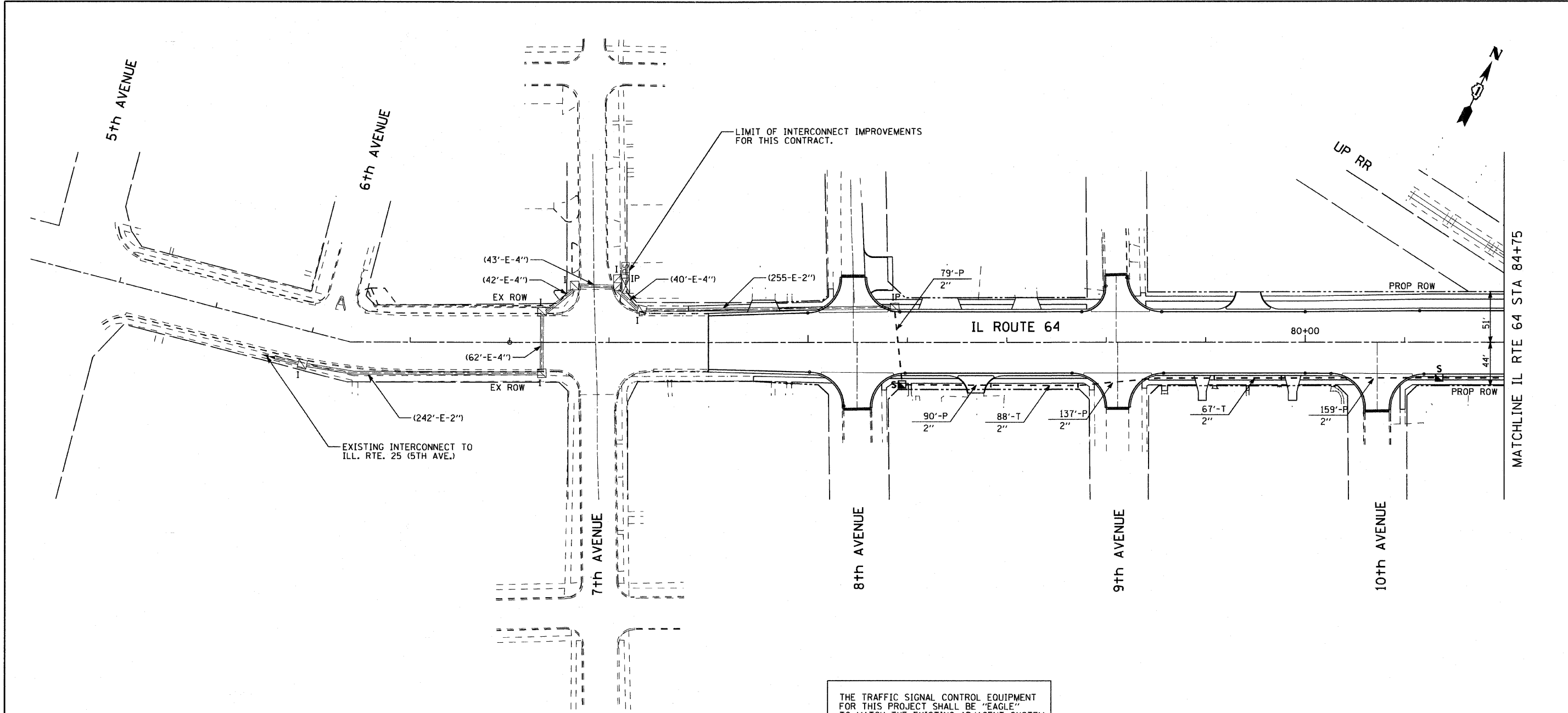


CIVIL ENGINEERING CONSULTANTS
RWA
 Regina Webster & Associates, Inc.
 8619 W. Bryn Mawr Ave., Suite 602
 Chicago, IL 60631-3551
 773-283-2600 Fax 773-283-2602
 www.RWAengineers.com

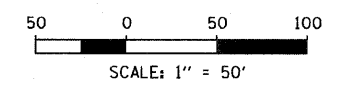


THE TRAFFIC SIGNAL CONTROL EQUIPMENT FOR THIS PROJECT SHALL BE "EAGLE" TO MATCH THE EXISTING ADJACENT SYSTEM

CONTRACTOR SHALL CLEAN OUT AND INSPECT EXISTING INTERCONNECT CONDUIT TO BE REUSED AS PART OF CONTRACT #62410

ALL FIBER OPTIC AND TRACER CABLE WILL BE INSTALLED AS PART OF CONTRACT #62410

ALL PROPOSED CONDUITS SHOWN ON THE PLANS AS TRENCHED OR PUSHED SHALL BE INCLUDED UNDER THE "UNDERGROUND CONDUIT" PAY ITEM FOR THE SIZES SHOWN.



SHEET 1 OF 8

FILE NAME =	USER NAME = #USER#	DESIGNED - DW	REVISED -	STATE OF ILLINOIS DEPARTMENT OF TRANSPORTATION	INTERCONNECT PLAN IL ROUTE 64 5th AVENUE TO EAST OF 11th AVENUE			F.A. RTE.	SECTION	COUNTY	TOTAL SHEETS	SHEET NO.			
#FILE#		DRAWN - DW	REVISED -		SCALE: 1"=50'-0"	SHEET NO.	OF	SHEETS	STA.	TO STA.	307	130 R-2	KANE	647	395
		CHECKED - JS	REVISED -		CONTRACT NO. 62410										
		DATE -	REVISED -		ILLINOIS FED. AID PROJECT										