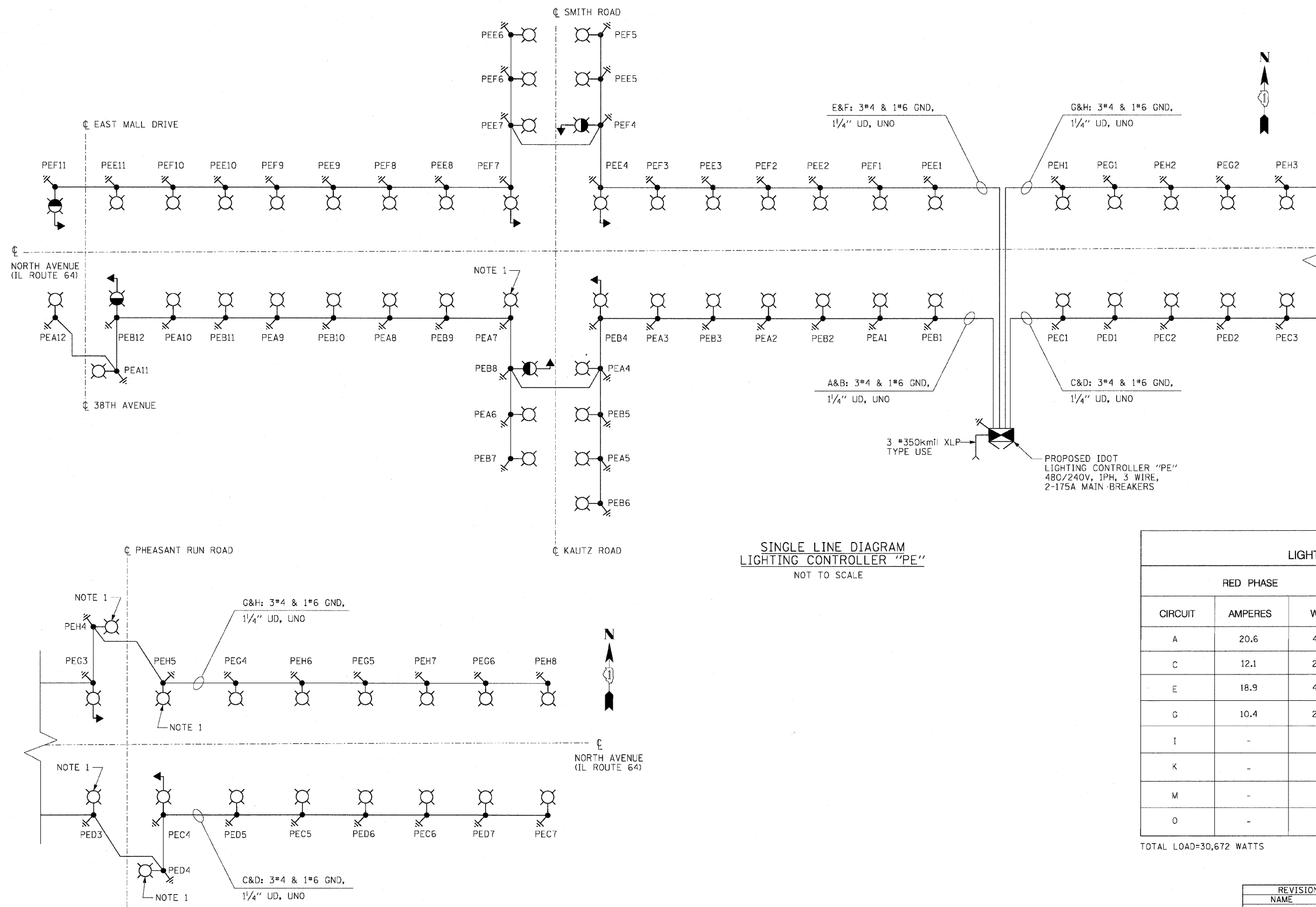


F.A.P. RTE.	SECTION	COUNTY	TOTAL SHEETS	SHEET NO.
307	130 R-2	DUPAGE, KANE	647	429
STA.		TO STA.		
FED. ROAD DIST. NO.		ILLINOIS FED. AID PROJECT		

62410



LEGEND

- LIGHTING UNIT:
47.5 FT. M.H., 15 FT. M.A.,
310W HPS M-C-III LUMINAIRE, UNO,
9" BREAKAWAY TRANSFORMER BASE
- COMBINATION TRAFFIC SIGNAL AND
LUMINAIRE LIGHTING UNIT:
45 FT. M.H., 15 FT. M.A.,
400W HPS M-C-III LUMINAIRE
- COMBINATION TRAFFIC SIGNAL AND
LUMINAIRE LIGHTING UNIT:
45 FT. M.H., 15 FT. M.A.,
310W HPS M-C-III LUMINAIRE
- LIGHTING CONTROLLER CABINET
- GROUND ROD
- ELECTRIC UTILITY SERVICE

NOTES

1. LUMINAIRE SHALL BE 400W HPS.

**SINGLE LINE DIAGRAM
 LIGHTING CONTROLLER "PE"**
 NOT TO SCALE

RED PHASE			BLACK PHASE		
CIRCUIT	AMPERES	WATTS	CIRCUIT	AMPERES	WATTS
A	20.6	4944	B	20.6	4944
C	12.1	2904	D	12.3	2952
E	18.9	4536	F	18.9	4536
G	10.4	2496	H	14.0	3360
I	-	-	J	-	-
K	-	-	L	-	-
M	-	-	N	-	-
O	-	-	P	-	-

TOTAL LOAD=30,672 WATTS

E-15

REVISIONS	
NAME	DATE

ILLINOIS DEPARTMENT OF TRANSPORTATION
 F.A.P. ROUTE 307 (ILLINOIS ROUTE 64)

**SINGLE LINE DIAGRAM
 LIGHTING CONTROLLER "PE"**

SCALE: NONE
 DATE: NOVEMBER 1, 2011

DRAWN BY: HR
 CHECKED BY: JPC

