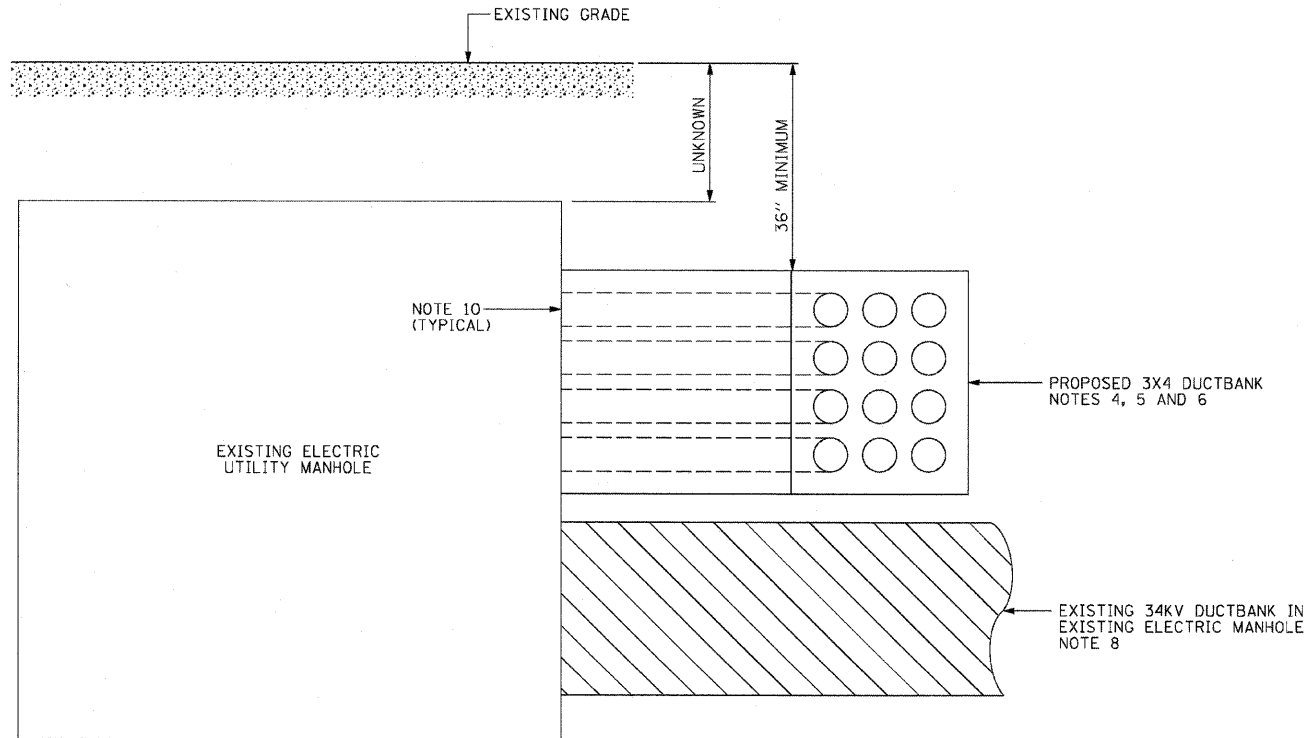
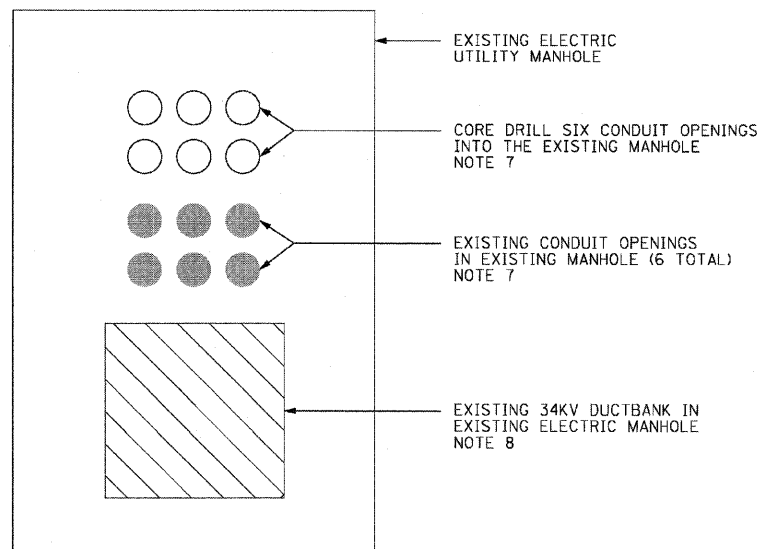


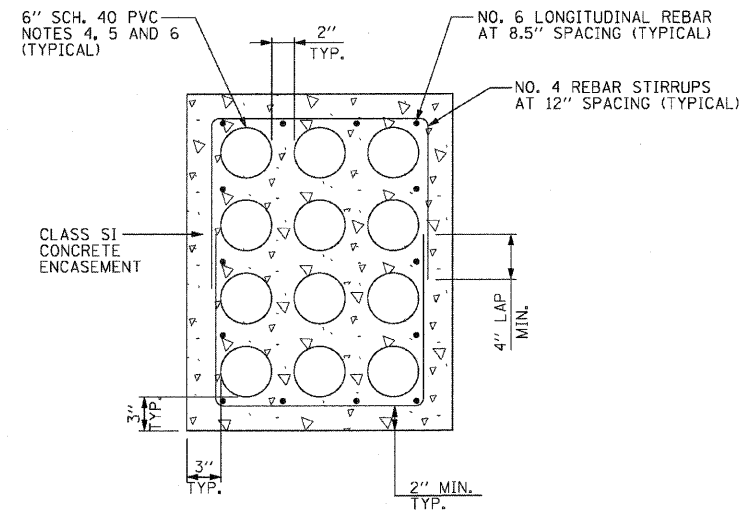
F.A.P. RTE.	SECTION	COUNTY	TOTAL SHEETS	SHEET NO.
307	130 R-2	DUPAGE, KANE	647	430
STA.		TO STA.		
FED. ROAD DIST. NO.		ILLINOIS FED. AID PROJECT		



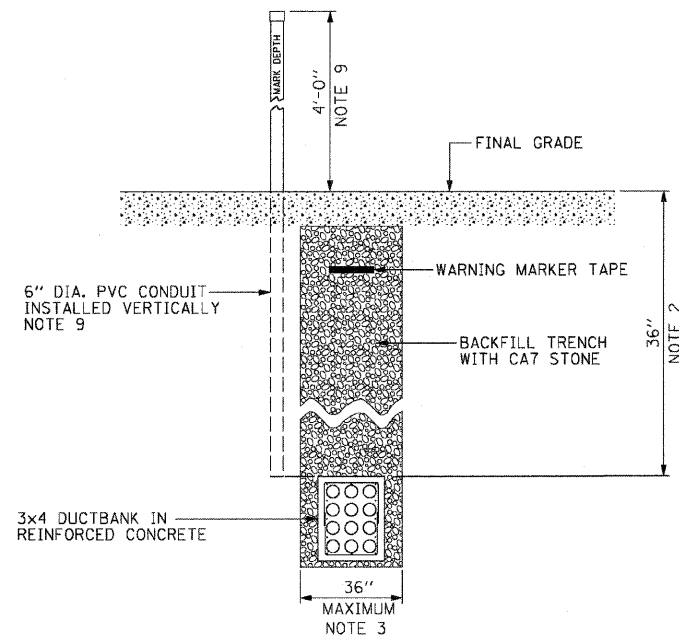
1 EXISTING ELECTRIC MANHOLE - VIEW LOOKING NORTH  
 E-16 NOT TO SCALE



2 EXISTING ELECTRIC MANHOLE - VIEW LOOKING WEST  
 E-16 NOT TO SCALE



3 3x4 REINFORCED CONCRETE ENCASED DUCTBANK DETAIL  
 E-16 NOT TO SCALE



4 DUCTBANK TRENCH DETAIL  
 E-16 NOT TO SCALE

**NOTES:**

- SEE SHEET E-01 FOR ELECTRICAL SYMBOLS, CALL-OUTS SAMPLES, ABBREVIATIONS, AND GENERAL NOTES. SEE SHEET E-04 FOR THE PLAN VIEW OF THE DUCTBANK INSTALLATION.
- PROVIDE A MINIMUM CLEARANCE OF 36 INCHES AS MEASURED FROM TOP OF DUCTBANK TO FINISHED GRADE. THE CONTRACTOR SHALL INSTALL THE DUCTBANK DEEPER AS NEEDED AND AS DIRECTED BY THE ENGINEER TO AVOID CONFLICT WITH OTHER UTILITIES, DRAINAGE STRUCTURES AND ALL UNDERGROUND OBSTACLES AT NO ADDITIONAL COST TO IDOT.
- THE TRENCH SHALL HAVE MAXIMUM WIDTH OF 36 INCHES. THE CONTRACTOR SHALL NOT INCREASE THE TRENCH WIDTH WITHOUT PRIOR APPROVAL FROM THE ENGINEER. WIDENING OF THE TRENCH WIDTH IN EXCESS OF 36 INCHES WILL BE DONE AT NO ADDITIONAL COST TO IDOT.
- PROVIDE RIGID GALVANIZED STEEL CONDUIT ELBOWS FOR ALL BENDS AND CHANGES IN CONDUIT DIRECTION. THE CONDUIT ELBOWS SHALL HAVE A MINIMUM BEND RADIUS OF 48". THE CONDUIT ELBOWS SHALL BE PAID FOR UNDER THE "CONDUIT ELBOW ENCASED, 6" DIA., GALVANIZED STEEL" PAY ITEM.
- PROVIDE CONDUIT SPACERS TO OBTAIN A MINIMUM ENVELOPE OF 2" OF CONCRETE AROUND EACH CONDUIT AND A MINIMUM OF 3" CONCRETE COVER OVERALL AROUND THE ENCASED RUN AS SHOWN.
- PROVIDE A PULLABLE MULE TAPE IN EACH CONDUIT.
- THE EXISTING MANHOLE SHALL BE CORED DRILLED FOR SIX OF THE PROPOSED CONDUITS AND THE REMAINING CONDUITS SHALL BE INSTALLED IN THE SIX EXISTING CONDUIT OPENINGS. THE CORE DRILLING SHALL BE PAID FOR UNDER THE "DRILL EXISTING HEAVY DUTY HANDHOLE" PAY ITEM.
- EXISTING LIVE 34KV AND 12KV CABLES ARE LOCATED INSIDE THE EXISTING ELECTRIC MANHOLE. THE CONTRACTOR WILL NOT BE ALLOWED UNSUPERVISED ACCESS INTO THE MANHOLE TO PERFORM WORK. THE CITY OF ST. CHARLES ELECTRIC PERSONNEL WILL PROVIDE ACCESS INTO THE MANHOLE AND MUST BE PRESENT DURING THE CORE DRILLING AND CONDUIT INSTALLATION WORK. CONTACT THE CITY OF ST. CHARLES ELECTRICAL DEPARTMENT, MR TOM BRUHL AT 630-377-4401 TO SCHEDULE A DATE TO PERFORM THE WORK.
- PROVIDE A 6" DIA. SCHEDULE 40 PVC CONDUIT INSTALLED VERTICALLY TO MARK THE END OF THE DUCTBANK. THE VERTICAL CONDUIT SHALL BE INSTALLED DIRECTLY IN LINE WITH THE END OF THE DUCTBANK, BURIED A MINIMUM 3' BELOW GRADE AND EXTEND A MINIMUM OF 4' ABOVE FINAL GRADE. THE CONTRACTOR SHALL MARK THE APPROXIMATE DEPTH OF THE TOP OF THE DUCTBANK ON THE CONDUIT, 3' ABOVE GRADE, USING PERMANENT MARKER. THIS WORK SHALL BE PAID FOR UNDER THE "CONDUIT IN TRENCH, 6" DIA., PVC" PAY ITEM.
- PROVIDE WATER-TIGHT CONDUIT PLUGS FOR EACH OF THE TWELVE CONDUIT ENDS LOCATED IN THE VAULT.

REVISIONS	
NAME	DATE

ILLINOIS DEPARTMENT OF TRANSPORTATION  
 F.A.P. ROUTE 307 (ILLINOIS ROUTE 64)

**CONCRETE ENCASED  
 CONDUIT DETAILS**

SCALE: NONE DRAWN BY: WDS  
 DATE: MAY 13, 2011 CHECKED BY: JPC

