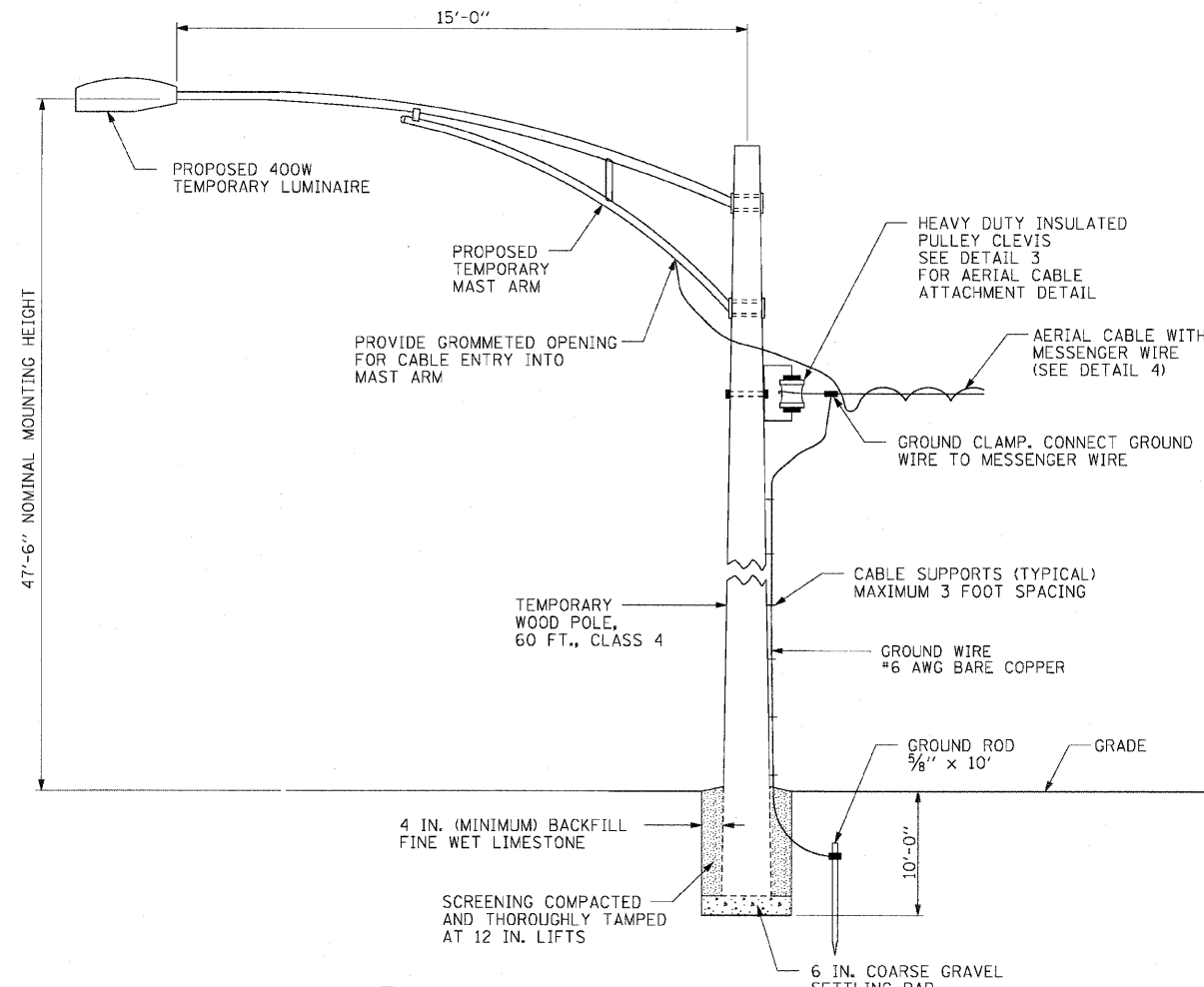
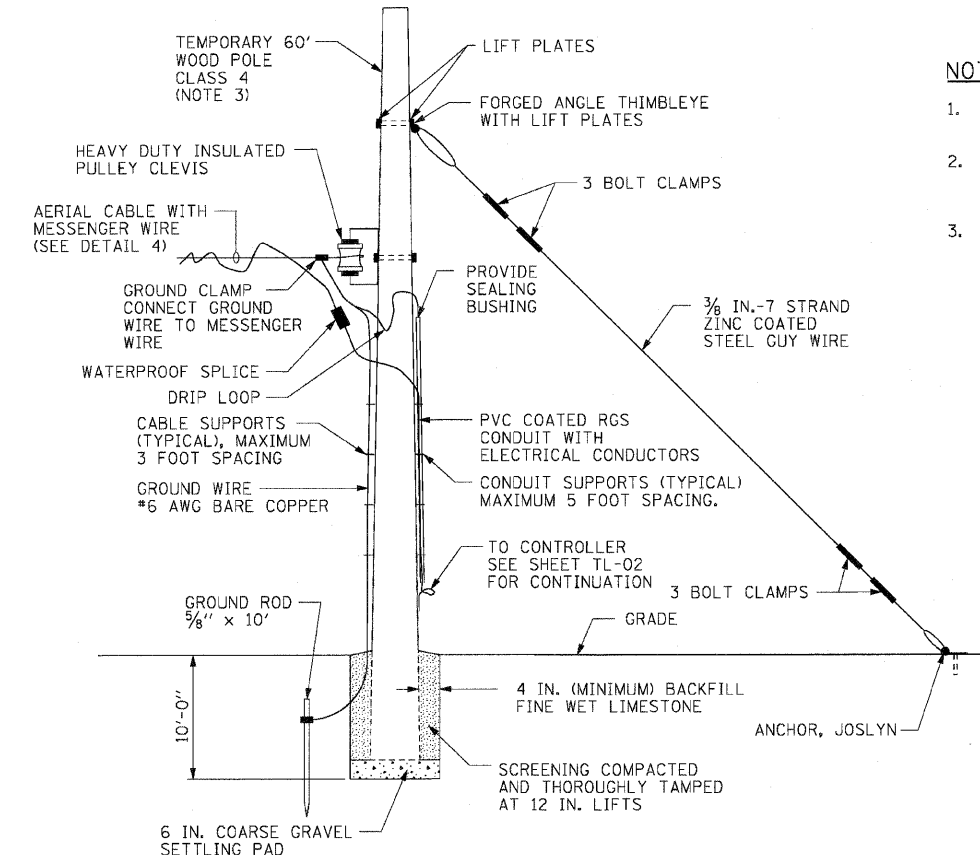


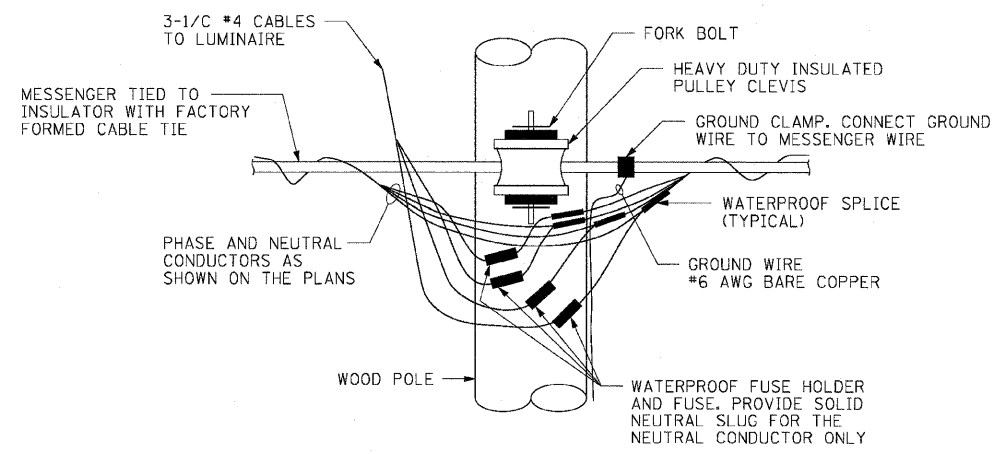
F.A.P. RTE.	SECTION	COUNTY	TOTAL SHEETS	SHEET NO.
307	130 R-2	DUPAGE, KANE	647	434
STA.		TO STA.		
FED. ROAD DIST. NO.	ILLINOIS	FED. AID PROJECT		62410



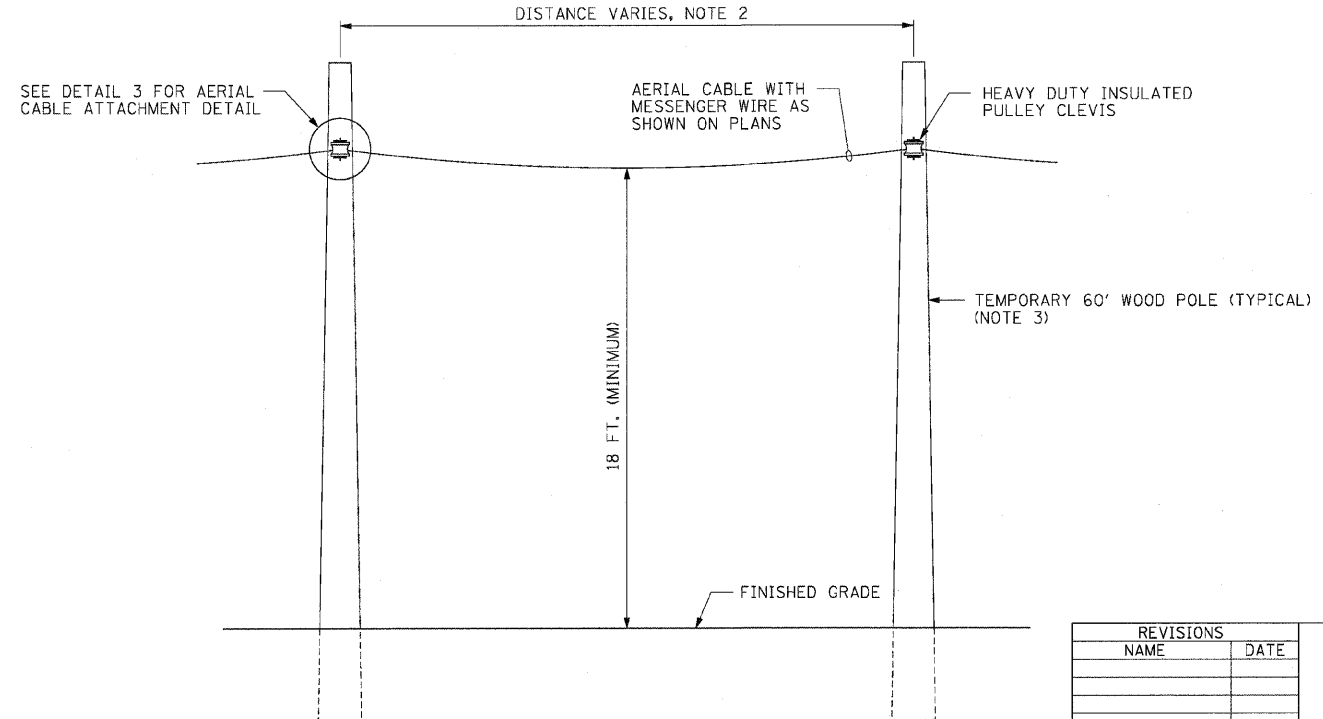
1 TEMPORARY LIGHTING UNIT INSTALLATION DETAIL  
 TL-03 WOOD POLE INSTALLATION IS SIMILAR NOT TO SCALE



2 TEMPORARY WOOD END POLE INSTALLATION DETAIL  
 TL-03 NOT TO SCALE



3 TEMPORARY WOOD POLE AERIAL CABLE ATTACHMENT DETAIL  
 TL-03 NOT TO SCALE



4 AERIAL CABLE INSTALLATION DETAIL  
 TL-03 NOT TO SCALE

NOTES

1. SEE SHEET TL-01 FOR LEGEND AND ABBREVIATIONS.
2. SEE TEMPORARY ROADWAY LIGHTING PLANS FOR PROPOSED INSTALLATION LOCATIONS OF THE WOOD POLES.
3. WOOD POLE IS SHOWN WITHOUT MAST ARM AND LUMINAIRE.



REVISIONS	
NAME	DATE

ILLINOIS DEPARTMENT OF TRANSPORTATION  
 F.A.P. ROUTE 307 (ILLINOIS ROUTE 64)  
**TEMPORARY ROADWAY LIGHTING WOOD POLE DETAILS**  
 SCALE: NONE  
 DATE: MAY 13, 2011  
 DRAWN BY: HR  
 CHECKED BY: JPC