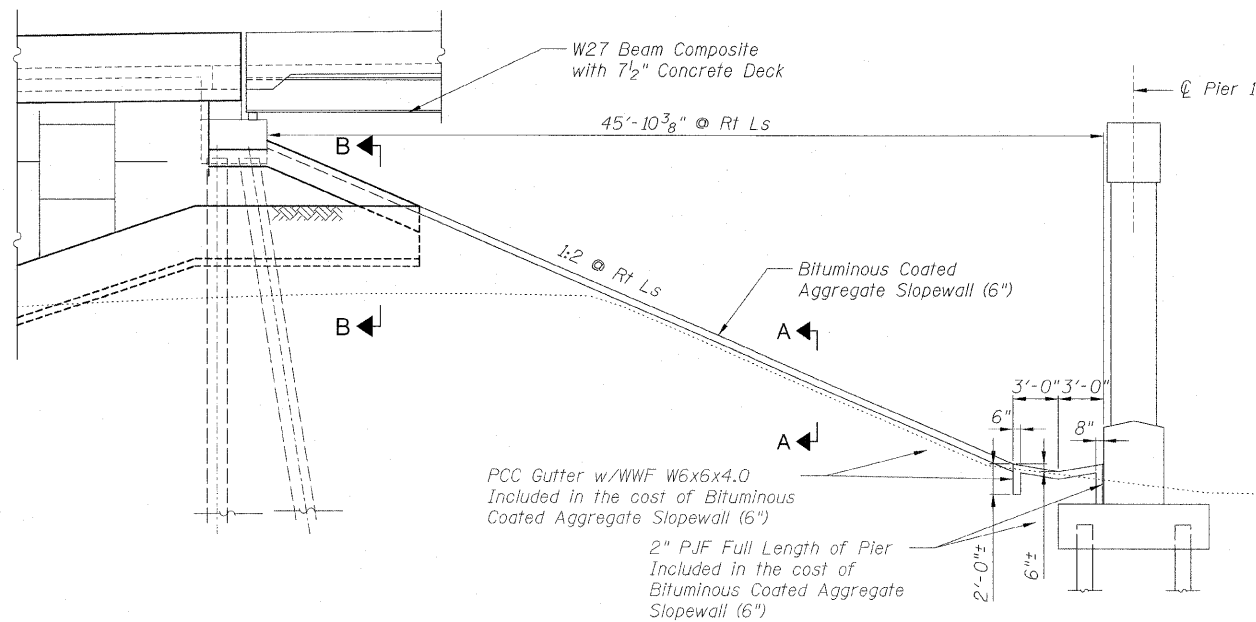


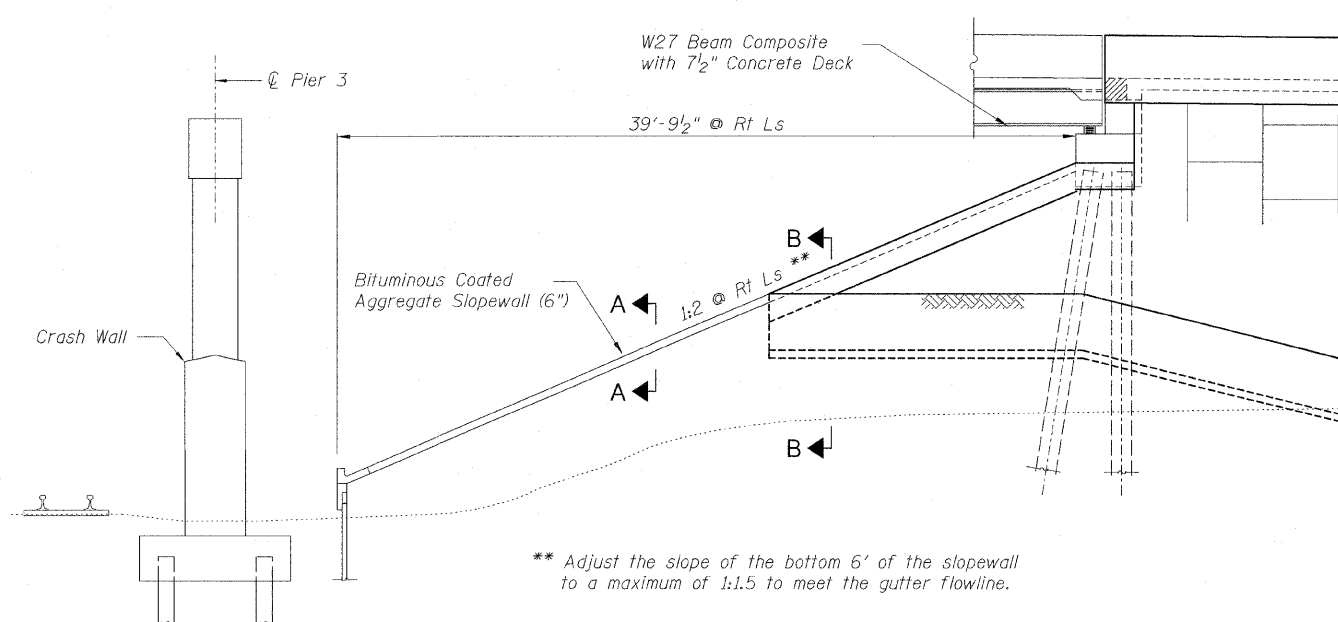
STATE OF ILLINOIS
 DEPARTMENT OF TRANSPORTATION

F.A.P. RTE.	SECTION	COUNTY	TOTAL SHEETS	SHEET NO.
307	130 R-2	DUPAGE, KANE	647	448
STA. 3356+37.74		TO STA. 3359+24.72		
FED. ROAD DIST. NO.	ILLINOIS	FED. AID PROJECT		

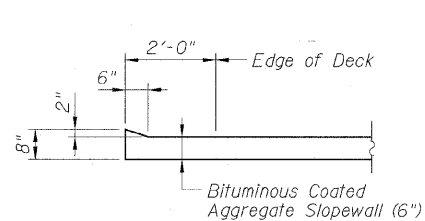
62410



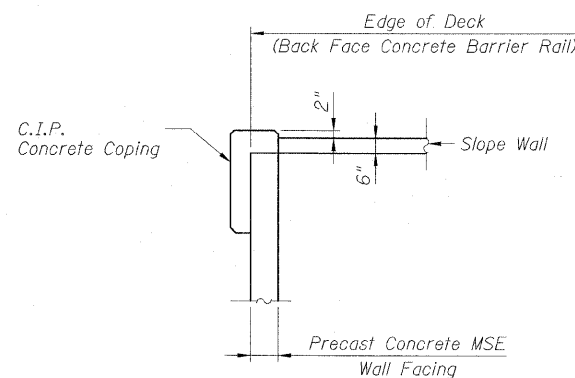
TYPICAL SECTION THRU W. ABUT. SLOPE WALL
 (Looking North)



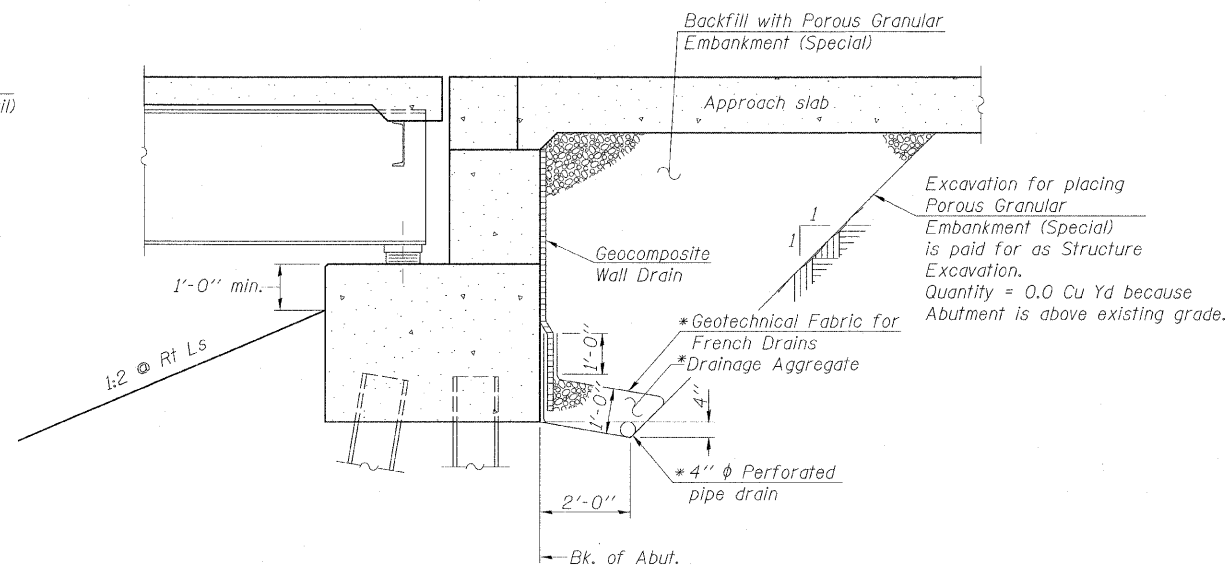
TYPICAL SECTION THRU E. ABUT. SLOPE WALL
 (Looking North)



SECTION A-A



SECTION B-B



SECTION THRU ABUTMENT

(Showing Backfill and Drainage System)

(Horiz. dim. @ Rt. L's)

*Included in the cost of Pipe Underdrains for Structures.

BILL OF MATERIAL

Item	Unit	Total
Bituminous Coated Aggregate Slope Wall, (6")	Sq Yd	1,673

NOTES:

- For General Notes see Sheet B2.
- For location and limits of Slope Wall see Sheet B1.
- For Abutment Details see Sheets B37 thru B41.
- For Retaining Wall Details see Sheets NW1 thru NW9, NE1 thru NE8, SW1 thru SW8, and SE1 thru SE9.
- Concrete Sealer shall be applied to the area of the abutment bearing seats, backwall, and the exposed portion of the front face of the abutment pile caps.

Sheet B5 of 56

Note:
 All drainage system components shall extend parallel to the abutment back wall until they intersect the wingwalls or 2'-0" from the end of the wingwalls when the wings are parallel to the abutment. The pipe shall extend under the wingwall, if necessary, until intersecting the side slopes. The pipes shall drain into concrete headwalls. (See Article 601.05 of the Standard Specifications and Highway Standard 601101).

REVISIONS	
NAME	DATE

F.A.P. ROUTE 307 ILLINOIS ROUTE 64
 (NORTH AVENUE)
 OVER E.J.&E. AND U.P. R.R.
 SLOPE WALL DETAILS
 STRUCTURE NUMBER 022-0190
 FAP 307 SECTION 130 R-2
 DUPAGE COUNTY
 STA. 3357+81.21
 SCALE: None
 DATE: NOVEMBER 1, 2011
 DRAWN BY: CHD
 CHECKED BY: MJP

AECOM