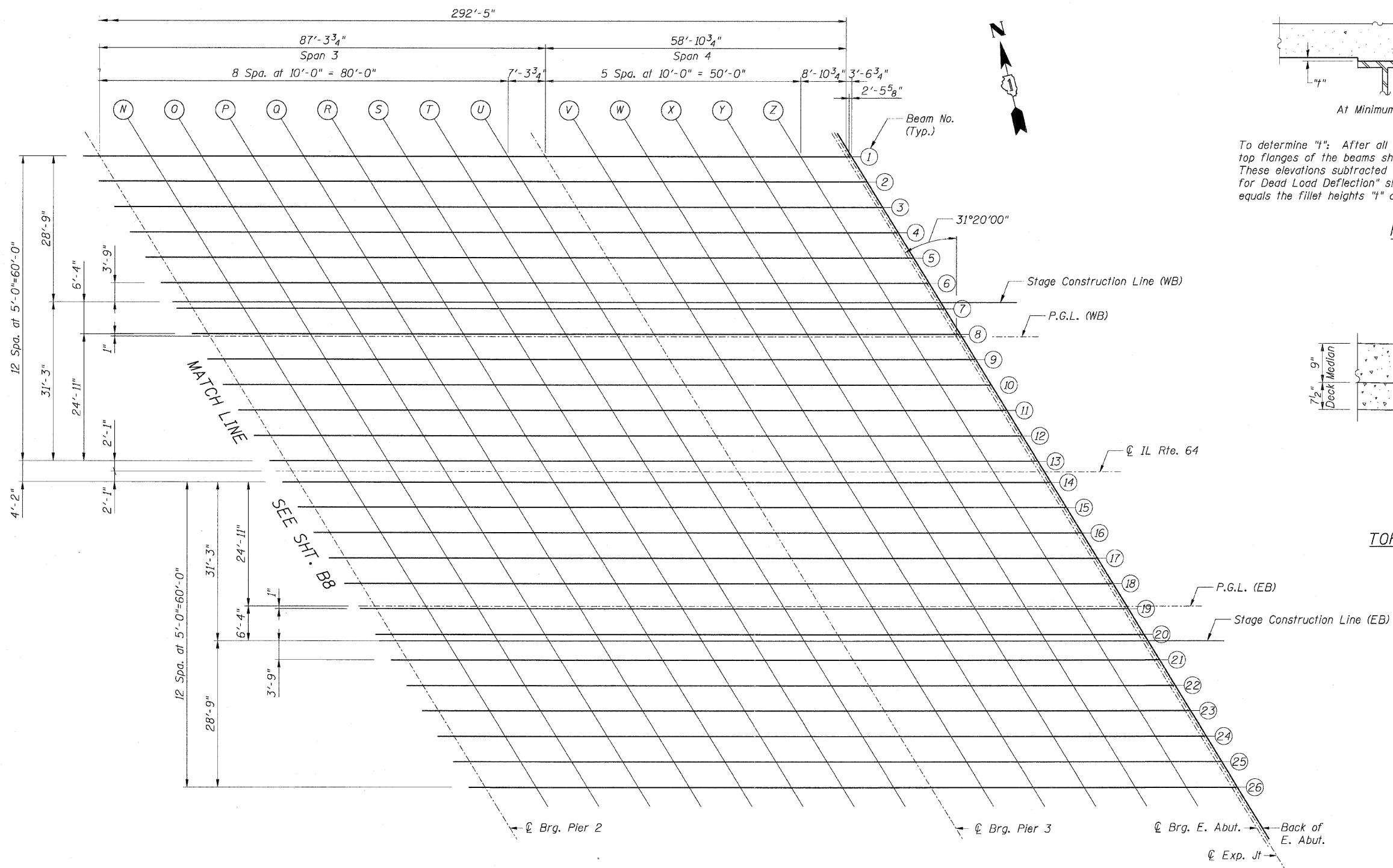


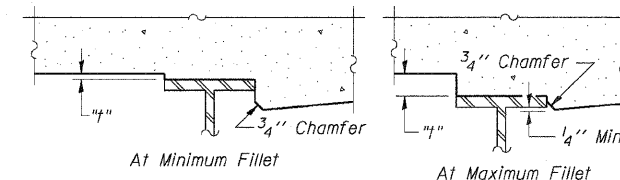
STATE OF ILLINOIS
 DEPARTMENT OF TRANSPORTATION

F.A.P. RTE.	SECTION	COUNTY	TOTAL SHEETS	SHEET NO.
307	130 R-2	DUPAGE, KANE	647	452
STA. 3356+37.74		TO STA. 3359+24.72		
FED. ROAD DIST. NO.		ILLINOIS FED. AID PROJECT		

62410

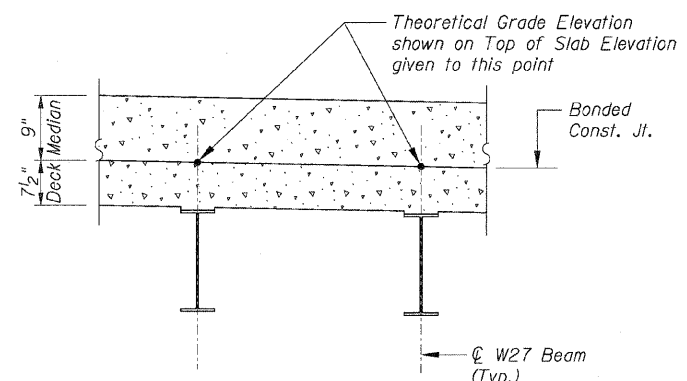


PLAN - SPANS 3 & 4



To determine "f": After all structural steel has been erected, elevations of the top flanges of the beams shall be taken at intervals shown on Sheets B8 and B9. These elevations subtracted from the "Theoretical Grade Elevations Adjusted for Dead Load Deflection" shown on Sheets B10 to B17, minus slab thickness, equals the fillet heights "f" above top flange of beams.

FILLET HEIGHTS



TOP OF SLAB ELEVATIONS AT MEDIAN

NOTES:

For Spans 1 and 2 Top of Slab elevation locations see Sheet B8.
 For Top of Slab Elevations see Sheets B10 thru B17.

Sheet B9 of 56

REVISIONS	
NAME	DATE

F.A.P. ROUTE 307 ILLINOIS ROUTE 64
 (NORTH AVENUE)
 OVER E.J.&E. AND U.P. R.R.
 TOP OF SLAB ELEVATION LOCATIONS - II
 STRUCTURE NUMBER 022-0190
 FAP 307 SECTION 130 R-2
 DUPAGE COUNTY
 STA. 3357+81.21
 SCALE: None
 DATE: MAY 13, 2011
 DRAWN BY: MRK/CHD
 CHECKED BY: RDP

