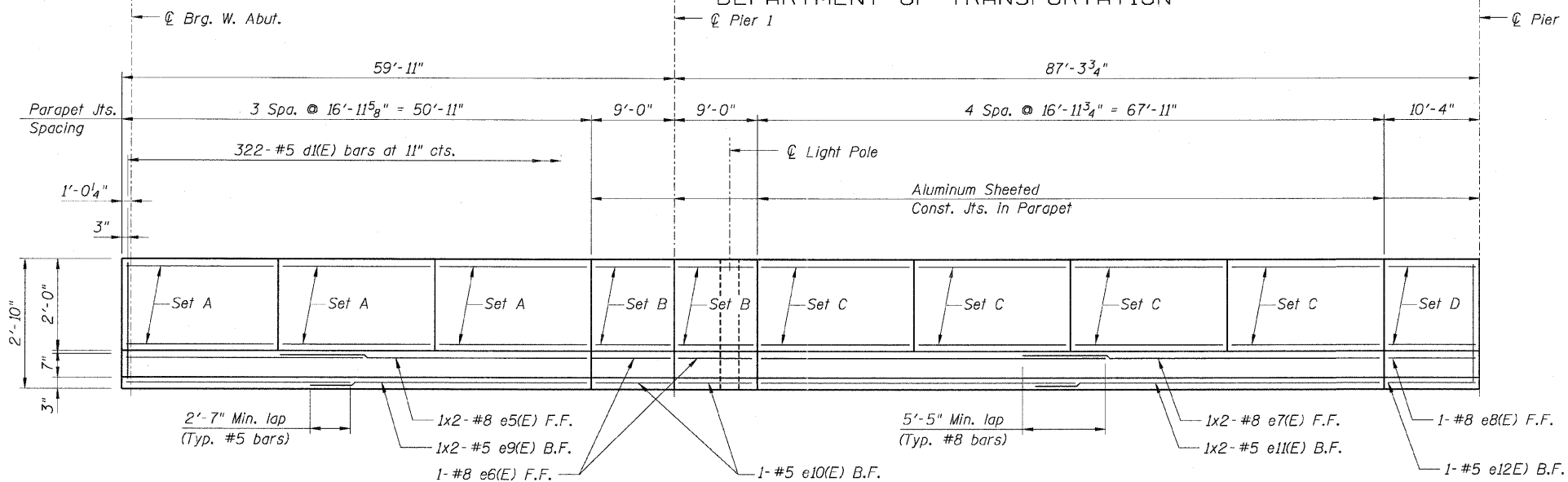


STATE OF ILLINOIS
 DEPARTMENT OF TRANSPORTATION

F.A.P. RTE.	SECTION	COUNTY	TOTAL SHEETS	SHEET NO.
307	130 R-2	DUPAGE, KANE	647	462
STA. 3356+37.74 TO STA. 3359+24.72				
FED. ROAD DIST. NO.			ILLINOIS FED. AID PROJECT	

62410



Set A (3 locations)
 7- #4 e1(E) bars around perimeter
 (See section thru parapet)

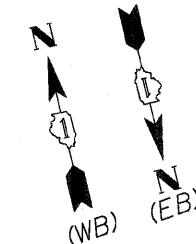
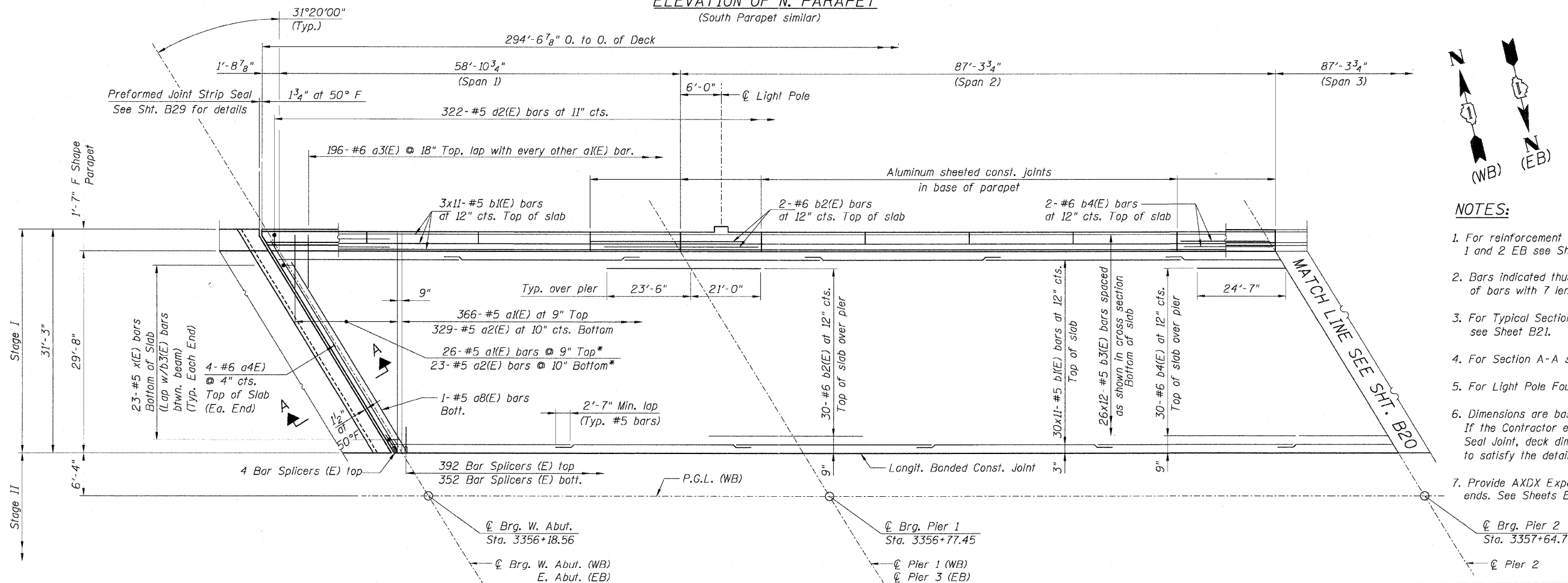
Set B (2 locations)
 7- #4 e2(E) bars around perimeter
 (See section thru parapet)

Set C (4 locations)
 7- #4 e3(E) bars around perimeter
 (See section thru parapet)

Set D (1 locations)
 7- #4 e4(E) bars around perimeter
 (See section thru parapet)

F.F. = Front Face
 B.F. = Back Face

ELEVATION OF N. PARAPET
 (South Parapet similar)



NOTES:

- For reinforcement in Spans 3 and 4 WB and Spans 1 and 2 EB see Sheet B20.
- Bars indicated thus 26x7- #5 etc. indicates 26 lines of bars with 7 lengths per line.
- For Typical Sections, Details and Bill of Material, see Sheet B21.
- For Section A-A see Sheet B25.
- For Light Pole Foundation Details see Sheet B25.
- Dimensions are based on Rolled Rail Strip Seal Joint. If the Contractor elects to use the Welded Rail Strip Seal Joint, deck dimensions may require adjustment to satisfy the details on Base Sheet EJ-SSJ. (Sheet B29)
- Provide AXDX Expansion Fittings for Conduit at bridge ends. See Sheets E-05 and E-11 for additional details.

* Order a1(E) & a2(E) bars full length. Cut to fit skew and use remainder of bars in opposite end.

SPANS 1 & 2
 W.B. Stage I - Shown
 E.B. Stage I - Opp. Hand and Rotated



REVISIONS	
NAME	DATE

F.A.P. ROUTE 307 ILLINOIS ROUTE 64
 (NORTH AVENUE)
 OVER E.J.&E. AND U.P. R.R.
 DECK PLAN
 SPANS 1 & 2 - STAGE I
 STRUCTURE NUMBER 022-0190
 FAP 307 SECTION 130 R-2
 DUPAGE COUNTY
 STA. 3357+81.21

SCALE: None DRAWN BY: CHD
 DATE: MAY 13, 2011 CHECKED BY: RDP

Sheet B19 of 56