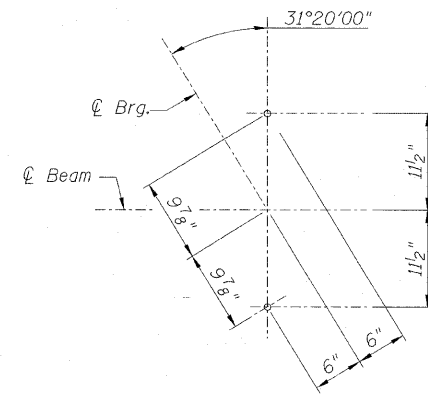


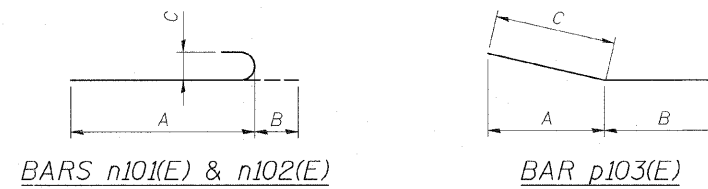
STATE OF ILLINOIS  
 DEPARTMENT OF TRANSPORTATION

F.A.P. RTE.	SECTION	COUNTY	TOTAL SHEETS	SHEET NO.
307	130 R-2	DUPAGE, KANE	647	487
STA. 3356+37.74		TO STA. 3359+24.72		
FED. ROAD DIST. NO.		ILLINOIS	FED. AID PROJECT	

62410

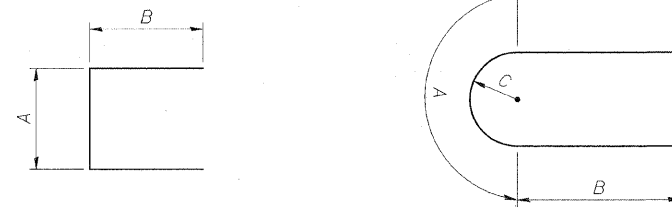


ANCHOR BOLT LOCATION



BARS n101(E) & n102(E)

BAR p103(E)



BARS s101(E), s102(E), s103(E)  
 u102(E), u103(E) & u105(E)

BARS u101(E) & u104(E)

A, B & C DIMENSIONS

Bar	A	B	C
n101(E)	9'-3"	11"	8"
n102(E)	7'-0"	11"	8"
p103(E)	4'-4 5/8"	4'-6"	4'-6"
s101(E)	2'-5"	2'-8"	-
s102(E)	3'-2"	2'-8"	-
s103(E)	3'-2"	7'-2"	-
u101(E)	4'-11 1/2"	3'-10"	1'-7"
u102(E)	3'-2"	3'-10"	-
u103(E)	3'-2"	1'-8"	-
u104(E)	4'-11 1/2"	3'-10"	1'-7"
u105(E)	3'-2"	3'-10"	-

WB PIER 1  
 BILL OF MATERIAL

Bar	No.	Size	Length	Shape
h101(E)	10	#6	30'-8"	—
h102(E)	4	#6	30'-8"	—
h103(E)	10	#6	38'-8"	—
h104(E)	4	#6	38'-8"	—
n101(E)	84	#8	10'-2"	C
n102(E)	3	#8	7'-11"	C
p101(E)	5	#8	34'-10"	—
p102(E)	5	#8	32'-1"	—
p103(E)	5	#8	9'-0"	—
p104(E)	8	#6	34'-10"	—
p105(E)	5	#6	18'-10"	—
p106(E)	10	#8	38'-8"	—
p107(E)	8	#6	38'-8"	—
p108(E)	5	#6	16'-4"	—
p109(E)	5	#6	24'-8"	—
s101(E)	308	#4	7'-9"	C
s102(E)	72	#6	8'-6"	C
s103(E)	72	#8	17'-6"	C
* sp101(E)	6	#4	17'-5"	WWWWWWW
t101(E)	79	#6	9'-8"	—
t102(E)	79	#10	9'-8"	—
u101(E)	6	#6	12'-8"	C
u102(E)	7	#6	10'-10"	C
u103(E)	62	#5	6'-6"	C
u104(E)	5	#6	12'-8"	C
u105(E)	5	#6	10'-10"	C
v101(E)	84	#8	20'-0"	—
w101(E)	11	#6	37'-5"	—
w102(E)	11	#6	38'-8"	—
w103(E)	13	#10	37'-5"	—
w104(E)	13	#10	38'-8"	—
Item	Unit	Quantity		
Reinforcement Bars, Epoxy Coated	Pound	29,590		
Concrete Structures	Cu Yd	199.3		
Structure Excavation	Cu Yd	163.4		
Furnishing Steel Piles HP14x73	Foot	1,395		
Driving Piles	Foot	1,395		
Test Pile Steel HP14x73	Each	1		
Pile Shoes	Each	32		
Concrete Encasement	Cu Yd	16.9		

\* Length is height of spiral

EB PIER 1  
 BILL OF MATERIAL

Bar	No.	Size	Length	Shape
h101(E)	10	#6	30'-8"	—
h102(E)	4	#6	30'-8"	—
h103(E)	10	#6	38'-8"	—
h104(E)	4	#6	38'-8"	—
n101(E)	84	#8	10'-2"	C
n102(E)	3	#8	7'-11"	C
p101(E)	5	#8	34'-10"	—
p102(E)	5	#8	32'-1"	—
p103(E)	5	#8	9'-0"	—
p104(E)	8	#6	34'-10"	—
p106(E)	10	#8	38'-8"	—
p107(E)	8	#6	38'-8"	—
p110(E)	5	#6	38'-8"	—
p111(E)	5	#6	12'-10"	—
s101(E)	308	#4	7'-9"	C
s102(E)	72	#6	8'-6"	C
s103(E)	72	#8	17'-6"	C
* sp101(E)	6	#4	17'-5"	WWWWWWW
t101(E)	79	#6	9'-8"	—
t102(E)	79	#10	9'-8"	—
u101(E)	6	#6	12'-8"	C
u102(E)	7	#6	10'-10"	C
u103(E)	52	#5	6'-6"	C
u104(E)	5	#6	12'-8"	C
u105(E)	5	#6	10'-10"	C
v101(E)	84	#8	20'-0"	—
w101(E)	11	#6	37'-5"	—
w102(E)	11	#6	38'-8"	—
w103(E)	13	#10	37'-5"	—
w104(E)	13	#10	38'-8"	—
Item	Unit	Quantity		
Reinforcement Bars, Epoxy Coated	Pound	29,460		
Concrete Structures	Cu Yd	199.2		
Structure Excavation	Cu Yd	163.4		
Furnishing Steel Piles HP14x73	Foot	1,440		
Driving Piles	Foot	1,440		
Pile Shoes	Each	32		
Concrete Encasement	Cu Yd	16.9		

NOTES:

1. Cast steps monolithically with cap.
2. Space cap reinforcement to miss anchor bolts.
3. Work sheets B42 thru B44 together.

Sheet B44 of 56

REVISIONS	
NAME	DATE

F.A.P. ROUTE 307 ILLINOIS ROUTE 64  
 (NORTH AVENUE)  
 OVER E.J.&E. AND U.P. R.R.  
 PIER 1  
 SECTIONS & DETAILS  
 STRUCTURE NUMBER 022-0190  
 FAP 307 SECTION 130 R-2  
 DUPAGE COUNTY  
 STA. 3357+81.21

SCALE: None DRAWN BY: CHD  
 DATE: NOVEMBER 1, 2011 CHECKED BY: MJP

