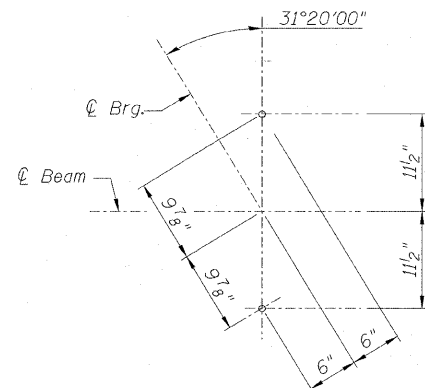


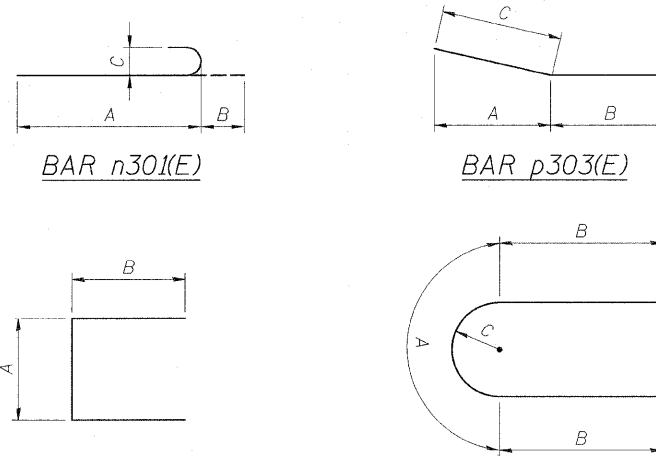
STATE OF ILLINOIS  
 DEPARTMENT OF TRANSPORTATION

F.A.P. RTE.	SECTION	COUNTY	TOTAL SHEETS	SHEET NO.
307	130 R-2	DUPAGE, KANE	647	493
STA. 3356+37.74 TO STA. 3359+24.72				
FED. ROAD DIST. NO.	ILLINOIS	FED. AID PROJECT		

62410

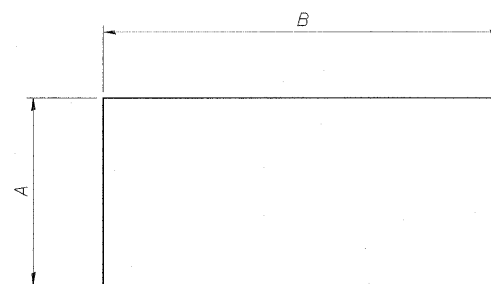


ANCHOR BOLT LOCATION



BARS s301(E),  
 u302(E), u303(E) & u305(E)

BARS u301(E) & u304(E)



BAR s302(E)

A, B & C DIMENSIONS

Bar	A	B	C
n301(E)	9'-3"	11"	8"
p303(E)	4'-4 5/8"	4'-6"	4'-6"
s301(E)	2'-5"	2'-8"	-
s302(E)	3'-2"	14'-5"	-
u301(E)	4'-11 1/2"	3'-10"	1'-7"
u302(E)	3'-2"	3'-10"	-
u303(E)	3'-2"	1'-8"	-
u304(E)	4'-11 1/2"	3'-10"	1'-7"
u305(E)	3'-2"	3'-10"	-

WB PIER 3  
 BILL OF MATERIAL

Bar	No.	Size	Length	Shape	
n301(E)	30	#6	34'-10"	—	
n302(E)	4	#6	34'-10"	—	
n303(E)	30	#6	38'-8"	—	
n304(E)	4	#6	38'-8"	—	
n301(E)	231	#8	10'-2"	C	
p301(E)	5	#8	34'-10"	—	
p302(E)	5	#8	32'-1"	—	
p303(E)	5	#8	9'-0"	—	
p304(E)	8	#6	34'-10"	—	
p306(E)	10	#8	38'-8"	—	
p307(E)	8	#6	38'-8"	—	
p310(E)	5	#6	38'-8"	—	
p311(E)	5	#6	12'-10"	—	
s301(E)	308	#4	7'-9"	□	
s302(E)	144	#8	17'-7"	□	
sp301(E)	6	#4	8'-7"	WWWWWWW	
t301(E)	79	#6	9'-8"	—	
t302(E)	79	#10	9'-8"	—	
u301(E)	6	#6	12'-8"	C	
u302(E)	7	#6	10'-10"	□	
u303(E)	52	#5	6'-6"	□	
u304(E)	15	#6	12'-8"	C	
u305(E)	15	#6	10'-10"	□	
v301(E)	84	#8	11'-5"	—	
v302(E)	3	#8	13'-6"	—	
w301(E)	11	#6	37'-5"	—	
w302(E)	11	#6	38'-8"	—	
w303(E)	13	#10	37'-5"	—	
w304(E)	13	#10	38'-8"	—	
Item				Unit	Quantity
Reinforcement Bars		Epoxy Coated	Pound	36,230	
Concrete Structures		Cu Yd	285.5		
Structure Excavation		Cu Yd	151.7		
Furnishing Steel Piles		HP14x73	Foot	1,395	
Driving Piles		Foot	1,395		
Test Pile Steel		HP14x73	Each	1	
Pile Shoes		Each	32		
Concrete Encasement		Cu Yd	16.9		

\* Length is height of spiral

EB PIER 3  
 BILL OF MATERIAL

Bar	No.	Size	Length	Shape	
n301(E)	30	#6	34'-10"	—	
n302(E)	4	#6	34'-10"	—	
n303(E)	30	#6	38'-8"	—	
n304(E)	4	#6	38'-8"	—	
n301(E)	236	#8	10'-2"	C	
p301(E)	5	#8	34'-10"	—	
p302(E)	5	#8	32'-1"	—	
p303(E)	5	#8	9'-0"	—	
p304(E)	8	#6	34'-10"	—	
p305(E)	5	#6	18'-10"	—	
p306(E)	10	#8	38'-8"	—	
p307(E)	8	#6	38'-8"	—	
p308(E)	5	#6	16'-4"	—	
p309(E)	5	#6	24'-8"	—	
s301(E)	308	#4	7'-9"	□	
s302(E)	144	#8	17'-7"	□	
sp301(E)	6	#4	8'-7"	WWWWWWW	
t301(E)	79	#6	9'-8"	—	
t302(E)	79	#10	9'-8"	—	
u301(E)	6	#6	12'-8"	C	
u302(E)	7	#6	10'-10"	□	
u303(E)	62	#5	6'-6"	□	
u304(E)	15	#6	12'-8"	C	
u305(E)	15	#6	10'-10"	□	
v301(E)	84	#8	11'-5"	—	
v302(E)	3	#8	13'-6"	—	
w301(E)	11	#6	37'-5"	—	
w302(E)	11	#6	38'-8"	—	
w303(E)	13	#10	37'-5"	—	
w304(E)	13	#10	38'-8"	—	
Item				Unit	Quantity
Reinforcement Bars		Epoxy Coated	Pound	36,230	
Concrete Structures		Cu Yd	288.3		
Structure Excavation		Cu Yd	151.7		
Furnishing Steel Piles		HP14x73	Foot	1,440	
Driving Piles		Foot	1,440		
Test Pile Steel		HP14x73	Each	1	
Pile Shoes		Each	32		
Concrete Encasement		Cu Yd	16.9		

NOTES:

1. Cast steps monolithically with cap.
2. Space cap reinforcement to miss anchor bolts.
3. Work sheets B48 thru B50 together.

Sheet B50 of 56

REVISIONS	
NAME	DATE

F.A.P. ROUTE 307 ILLINOIS ROUTE 64  
 (NORTH AVENUE)  
 OVER E.J.&E. AND U.P. R.R.  
 PIER 3  
 SECTIONS & DETAILS  
 STRUCTURE NUMBER 022-0190  
 FAP 307 SECTION 130 R-2  
 DUPAGE COUNTY  
 STA. 3357+81.21

SCALE: None DRAWN BY: XXX  
 DATE: NOVEMBER 1, 2011 CHECKED BY: MJP

