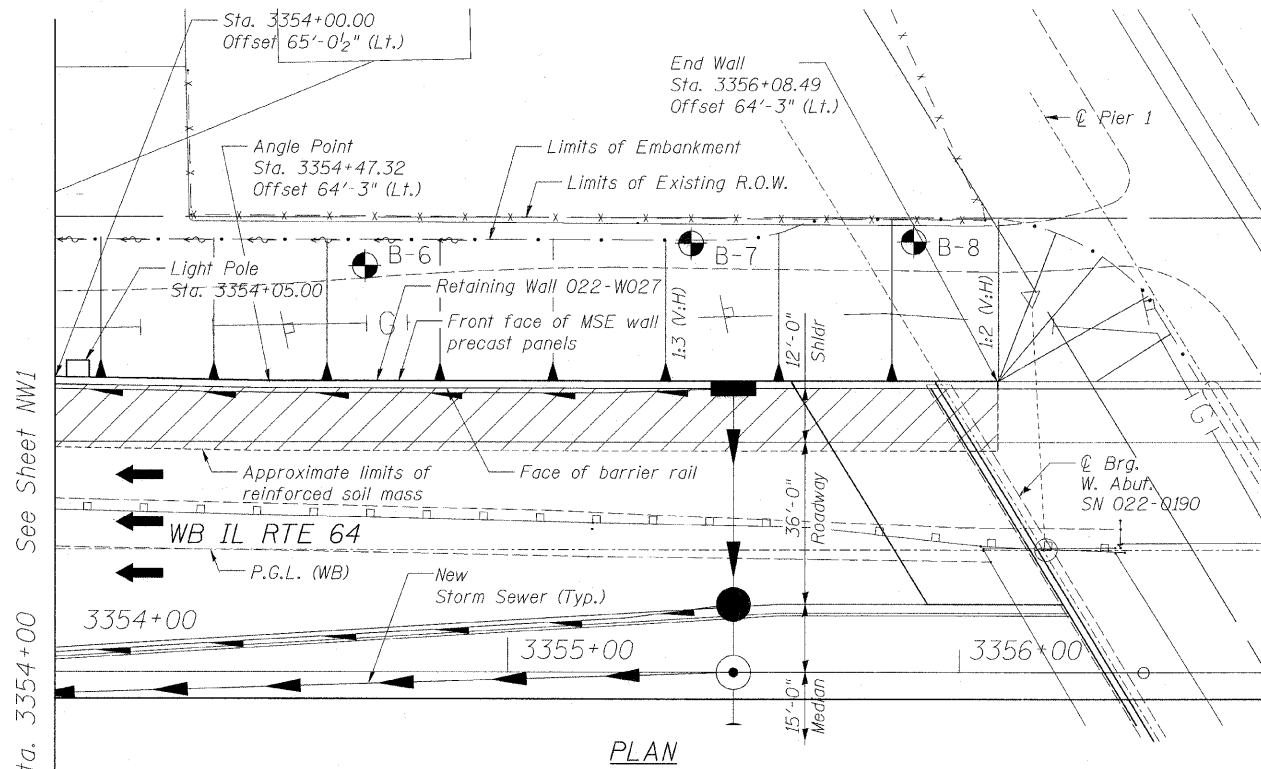


STATE OF ILLINOIS  
 DEPARTMENT OF TRANSPORTATION

F.A.P. RTE.	SECTION	COUNTY	TOTAL SHEETS	SHEET NO.
307	130 R-2	DUPAGE, KANE	647	501
STA. 3356+37.74		TO STA. 3359+24.72		
FED. ROAD DIST. NO.		ILLINOIS		FED. AID PROJECT

62410



ABBREVIATIONS:

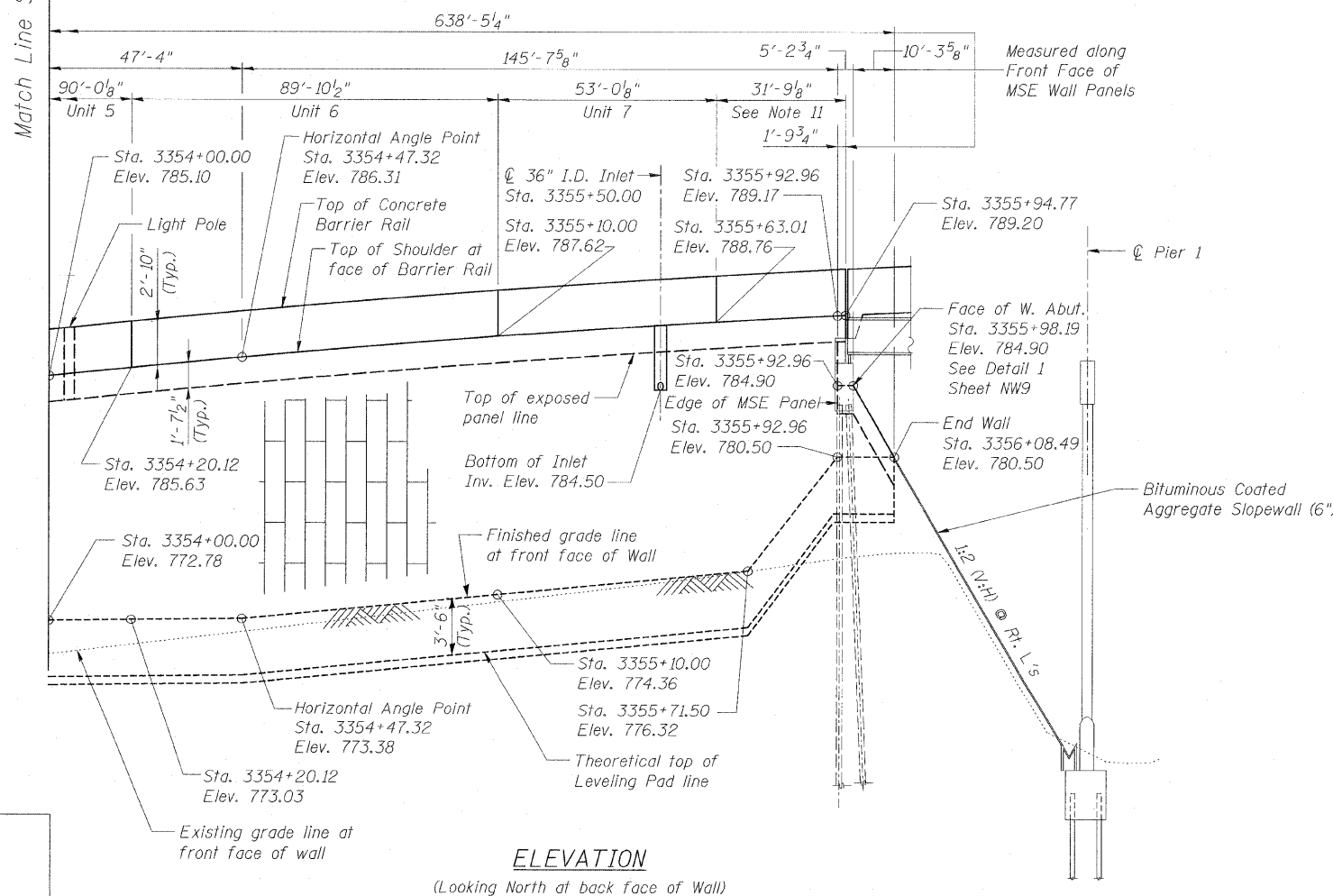
- B Bottom
- BF Back Face
- CJ Construction Joint
- EF Each Face
- FF Front Face
- Lt Left
- PJF Preformed Joint Filler
- PJS Preformed Joint Seal
- Shld Shoulder
- Sta Station
- T Top

LEGEND:

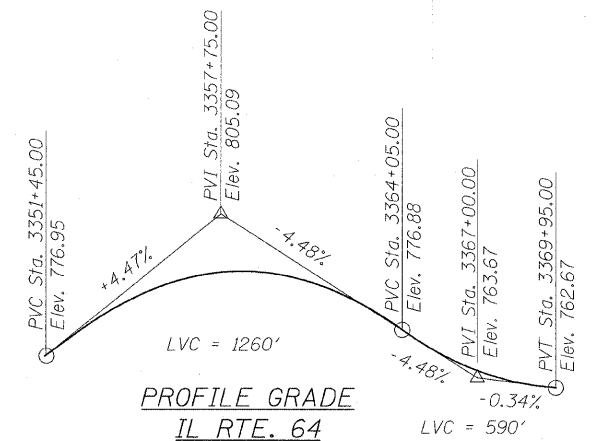
- Reinforced Soil Mass
- Removal of Unsuitable Material
- MSE Wall Panels
- Soil Boring

GENERAL NOTES:

1. Stations and offsets are measured from  $\odot$  IL Rte. 64 to the front face of the MSE wall panels.
2. Existing utilities in conflict with the retaining wall shall be abandoned or relocated according to directions given in the Roadway Plans.
3. All construction joints shall be bonded.
4. All exposed concrete edges shall have a 3/4" by 45° chamfer except where shown otherwise. Chamfer on vertical edges shall be continued a minimum of 1 foot below the finished ground line.
5. A protective coat shall be applied according to Section 503 of the Standard Specifications to the top and inside surfaces of the Barrier and the top of the Moment Slab.
6. Reinforcement bars shall conform to the requirements of ASTM A 706 Gr 60.
7. Reinforcement bars designated "E" shall be epoxy coated.
8. Coarse aggregate for concrete in Barrier shall meet the requirements of Section 1004.01(k) of the Standard Specifications for Class A.
9. Slipforming of Barrier is prohibited.
10. For Boring Logs, see Sheets SB1 and SB2.
11. For Coping and Barrier Details along the Approach Slab, see Bridge 022-0190 Plans.
12. Any embankment fill that is placed to support the bearing of the wall shall have a minimum unconfined compressive strength equal to 1.5 TSF or a minimum phi angle of 30°.
13. Standard symbols, abbreviations and patterns for existing features per Std. 000001-01 through 000001-04.
14. Temporary MSE Wall is located From Station 3348+00 to Station 3354+50. For Temporary MSE Wall Details, See Sheet TS1.



Note: The face of abutment station is measured to an offset equal to 63'-9" (The assumed back face of the MSE wall panels)



REVISIONS		F.A.P. ROUTE 307 ILLINOIS ROUTE 64 (NORTH AVENUE) OVER E.J.&E. AND U.P. R.R. GENERAL PLAN
NAME	DATE	
		STRUCTURE NUMBER 022-W027 FAP SECTION 130 R-2 DUPAGE COUNTY STA. 3349+70.04 TO 3356+08.49

SCALE: DATE: NOVEMBER 1, 2011

DRAWN BY: MRK  
 CHECKED BY: MJP

