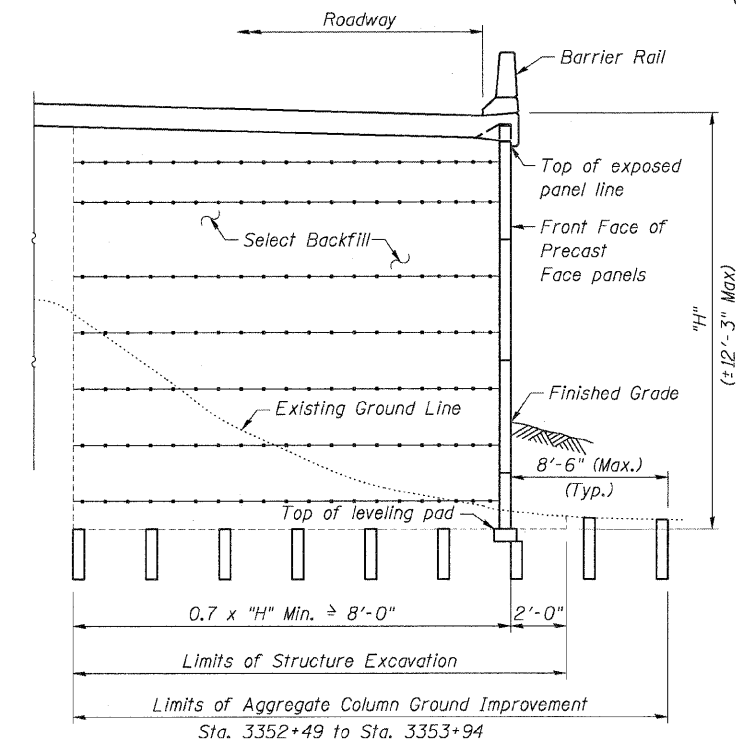
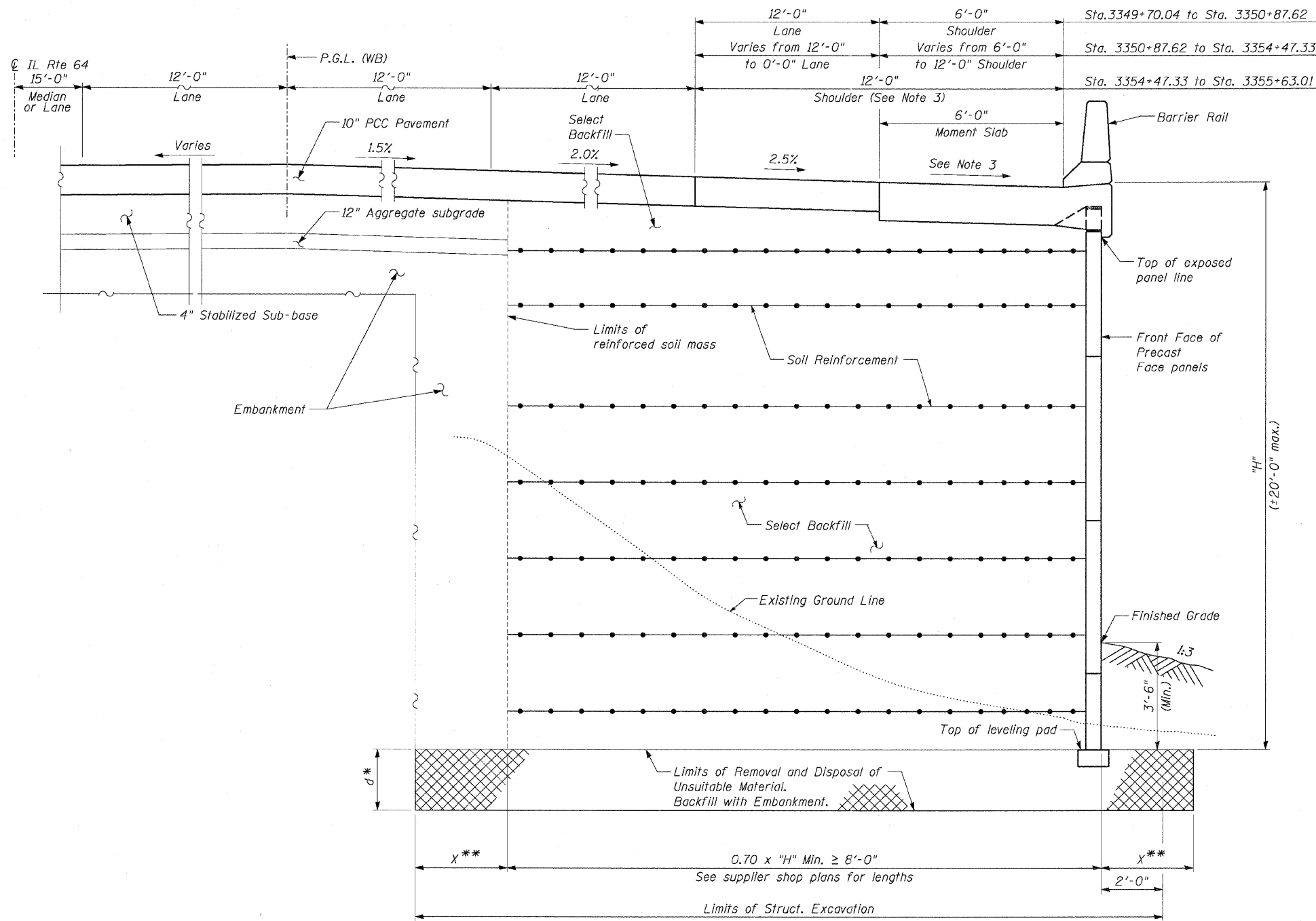


STATE OF ILLINOIS
 DEPARTMENT OF TRANSPORTATION

F.A.P. RTE.	SECTION	COUNTY	TOTAL SHEETS	SHEET NO.
307	130 R-2	DUPAGE, KANE	647	502
STA. 3356+37.74		TO STA. 3359+24.72		
FED. ROAD DIST. NO.		ILLINOIS FED. AID PROJECT		

62410



SECTION

NOTES:

- For General Notes, see Sheet NW2.
- For Moment Slab Details, see Sheets NW5 thru NW7.
- Shoulder Slopes: Sta. 3349+70.04 to Sta. 3355+10.00: 4.0%
 Sta. 3355+10.00 to Sta. 3355+63.67: Varies 4.0% to 2.0%

AGGREGATE COLUMN GROUND IMPROVEMENT:

- Aggregate Column Ground Improvement shall be designed and installed by the Contractor in accordance with the Special Provision for Aggregate Column Ground Improvement.
- For limits of Aggregate Column Ground Improvement, see Sheet NW1.
- The Top of Exposed Panel Elevations shown on the Elevation View are final elevations allowing for total settlement of 4 inches and settlement after completing wall or pavement construction of 1 inch. The MSE Wall vendor shall provide additional panel heights to allow for the settlement of the leveling pad during installation. The cost of any adjustment to precast face panels that are needed to compensate for settlement shall be included with Aggregate Column Ground Improvement.
- Vibrator compacted aggregate columns shall be constructed by the bottom feed method. Top feed will only be allowed if the columns are pre-bored the entire length and the Engineer determines that the open columns do not collapse during backfilling and vibration.

TYPICAL SECTION
 Sta. 3349+70.04 to Sta. 3355+63.01
 (Looking Downstation)

Ground Improvement Performance Requirements:

- Post-construction settlement of MSE wall shall not exceed 1.0 inch.
- Minimum factor of safety for global stability shall be 1.5.
- Minimum factor of safety for Nominal Equivalent Uniform Bearing Pressure shall be 2.5.
- Total settlement shall not exceed 4.0 inches.

* For Limits of Removal of Unsuitable Material see Sheet NW1. Over excavation beyond structure excavation and removal of unsuitable material will not be measured for payment.

** Edge Distance "X" is the same as the Removal Depth "d"



REVISIONS	
NAME	DATE

Sheet NW3 of 9

F.A.P. ROUTE 307 ILLINOIS ROUTE 64
 (NORTH AVENUE)
 OVER E.J.&E. AND U.P. R.R.
 TYPICAL SECTIONS

STRUCTURE NUMBER 022-W027
 FAP 307 SECTION 130 R-2
 DUPAGE COUNTY

STA. 3349+70.04 TO 3356+08.49
 SCALE: None DRAWN BY: MRK
 DATE: MAY 13, 2011 CHECKED BY: MJP