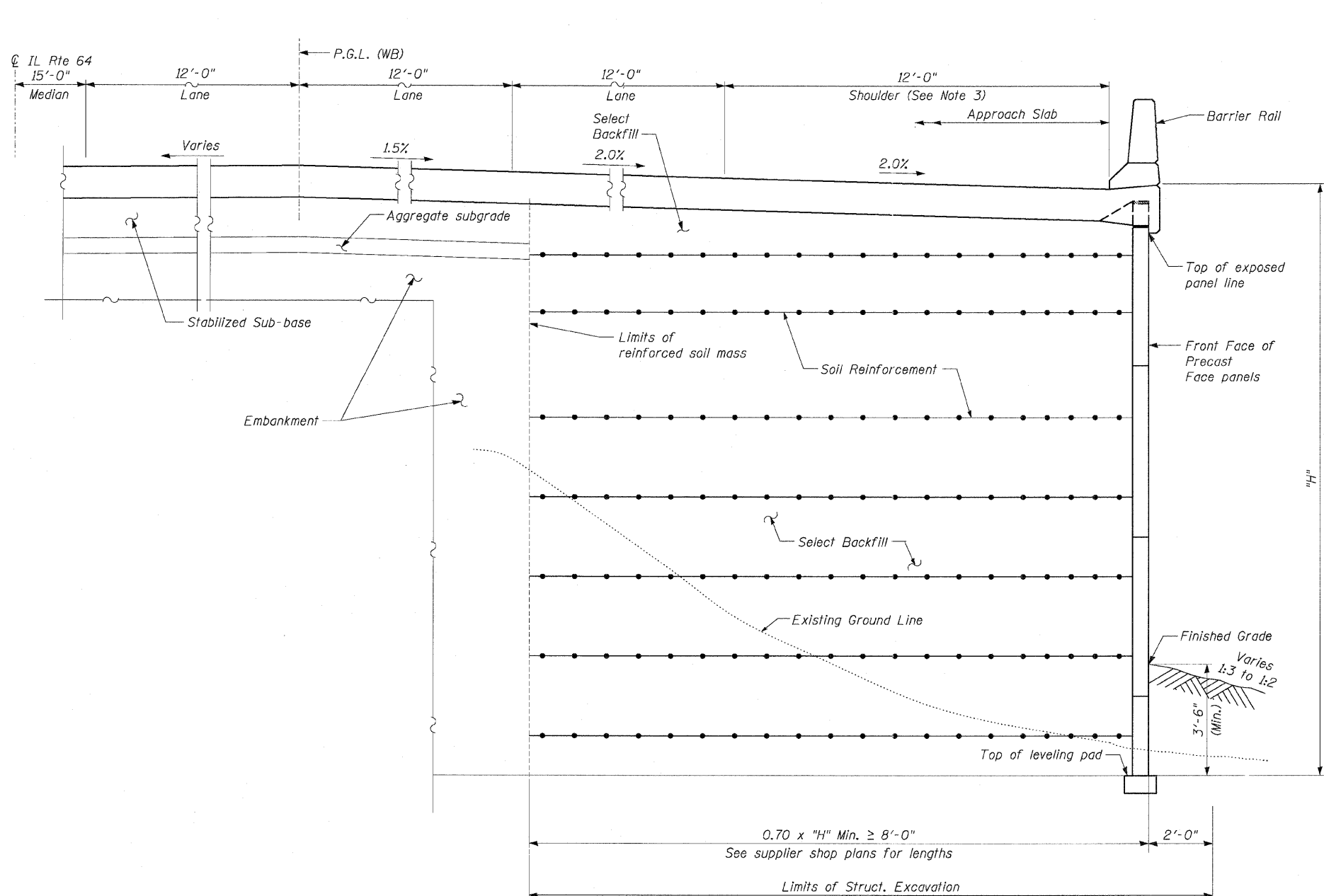


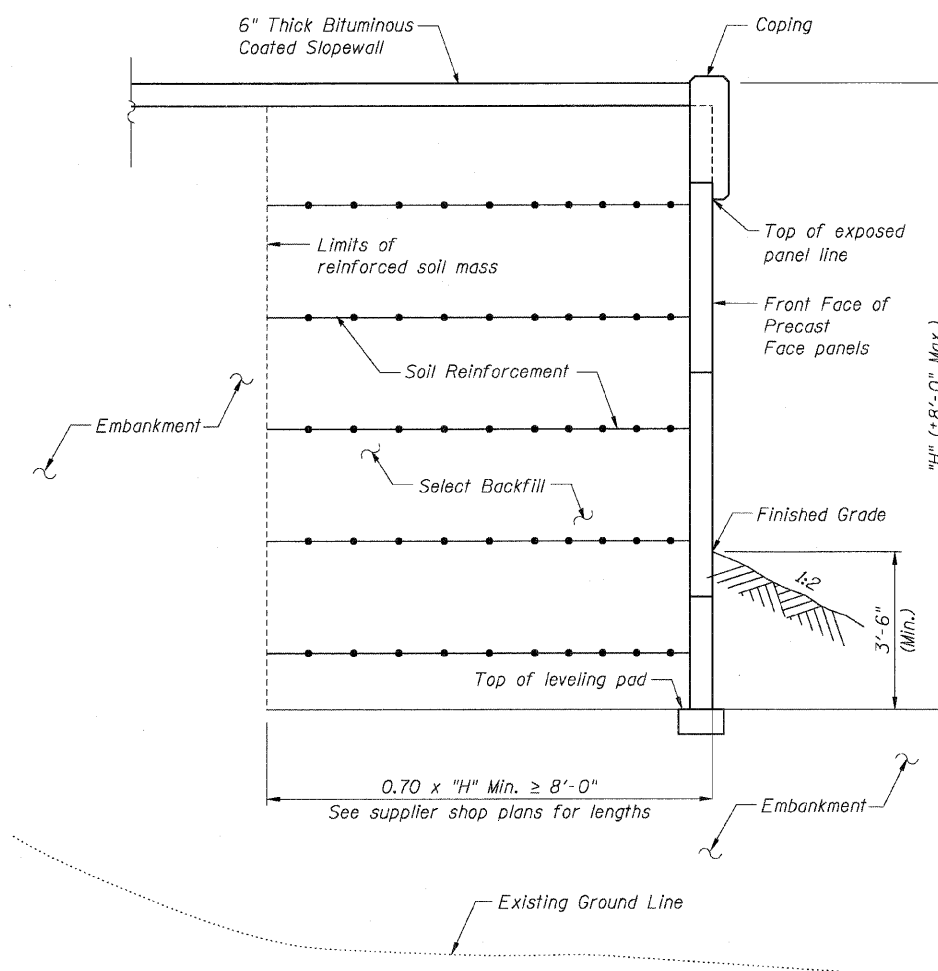
STATE OF ILLINOIS
 DEPARTMENT OF TRANSPORTATION

F.A.P. RTE.	SECTION	COUNTY	TOTAL SHEETS	SHEET NO.
307	130 R-2	DUPAGE, KANE	647	503
STA. 3356+37.74		TO STA. 3359+24.72		
FED. ROAD DIST. NO.		ILLINOIS FED. AID PROJECT		

62410



TYPICAL SECTION
 Sta. 3355+63.01 to Sta. 3355+92.96
 (Looking Downstation)



TYPICAL SECTION
 Sta. 3355+92.96 to Sta. 3356+08.49
 (Looking Downstation)

NOTES:

1. For General Notes, see Sheet NW2.
2. For Coping Details, see Sheet NW8.
3. For Approach Slab Details, see Bridge 022-0190 plans.

Sheet NW4 of 9

REVISIONS	
NAME	DATE

F.A.P. ROUTE 307 ILLINOIS ROUTE 64
 (NORTH AVENUE)
 OVER E.J.&E. AND U.P. R.R.
 TYPICAL SECTIONS

STRUCTURE NUMBER 022-W027
 FAP 307 SECTION 130 R-2
 DU PAGE COUNTY

STA. 3349+70.04 TO 3356+08.49
 SCALE: None DRAWN BY: MRK
 DATE: MAY 13, 2011 CHECKED BY: MJP

