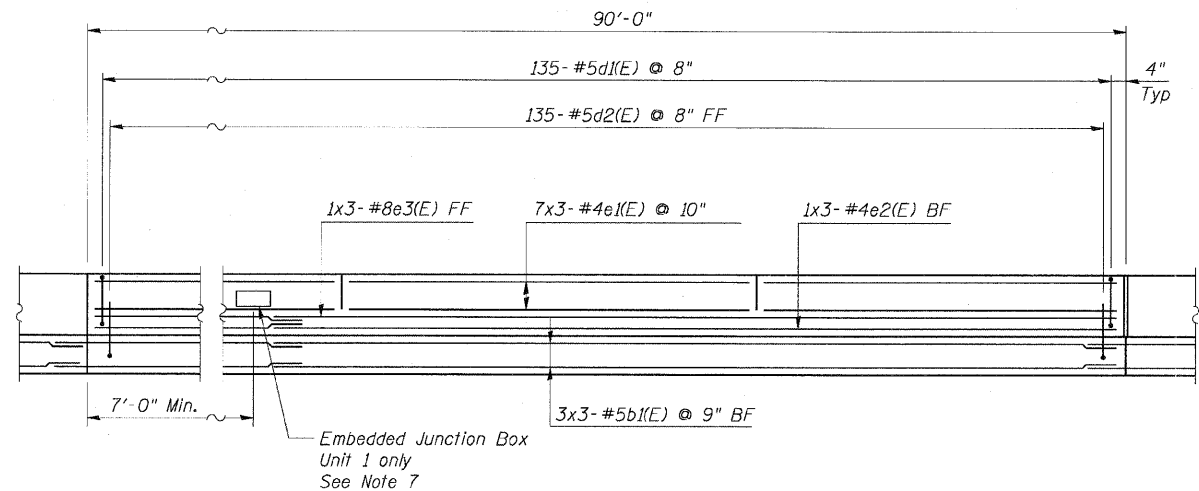


STATE OF ILLINOIS
 DEPARTMENT OF TRANSPORTATION

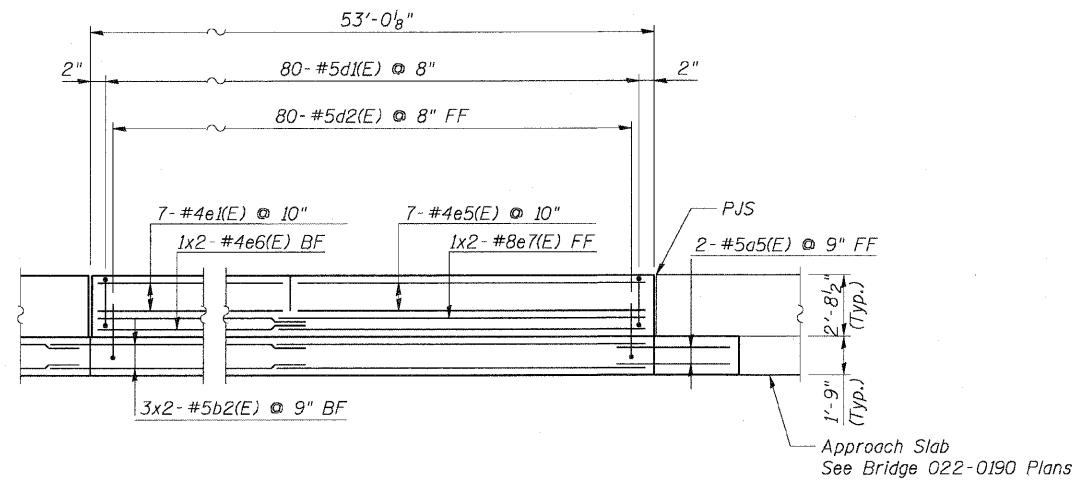
F.A.P. RTE.	SECTION	COUNTY	TOTAL SHEETS	SHEET NO.
307	130 R-2	DUPAGE, KANE	647	504
STA. 3356+37.74		TO STA. 3359+24.72		
ILLINOIS		FED. AID PROJECT		

62410



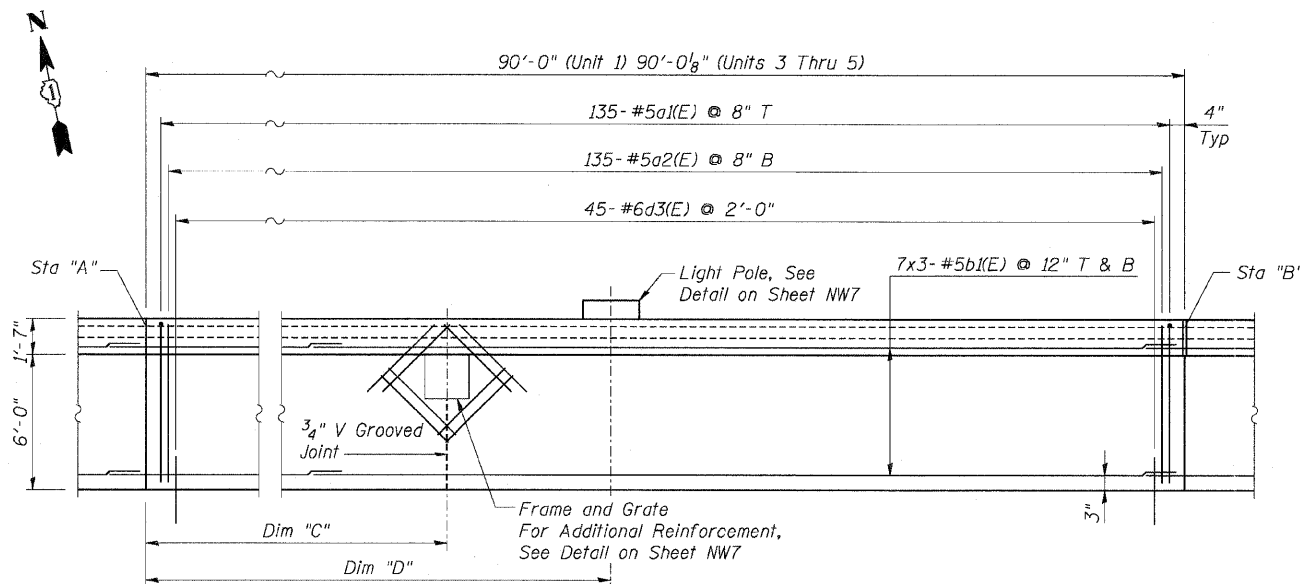
MOMENT SLAB ELEVATION

Units 1, 3, 4 and 5



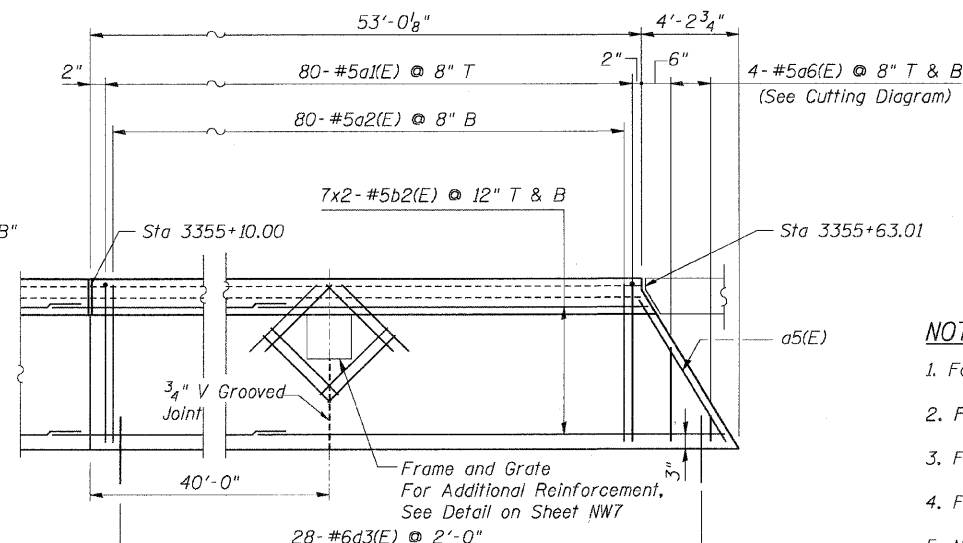
MOMENT SLAB ELEVATION

Unit 7



MOMENT SLAB PLAN

Units 1, 3, 4 and 5

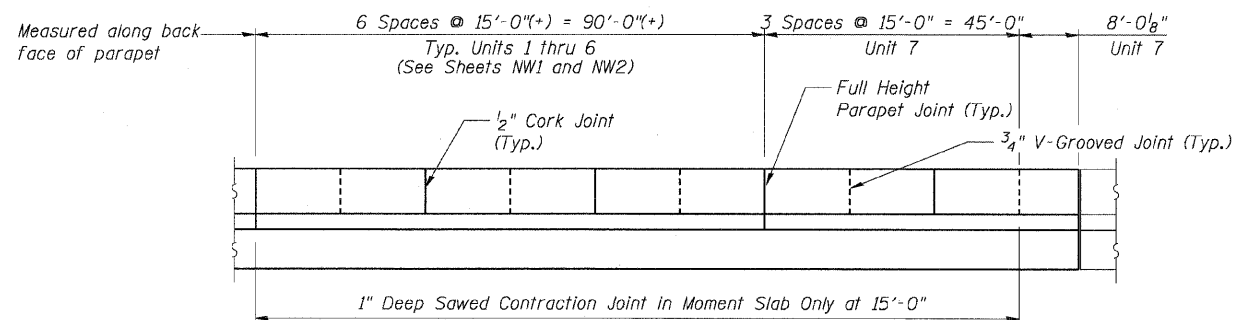


MOMENT SLAB PLAN

Unit 7

NOTES:

- For General Notes, see Sheet NW2.
- For Bar Bending Diagrams, see Sheet NW9.
- For Slab Elevations, see Roadway Plans.
- For Barrier Joint Details, See Sheet NW9.
- Minimum lap lengths for horizontal bars shall be as follows:
 for #5b bars - 3'-8"
 for #5e bars - 3'-3"
 for #8e bars - 6'-9"
- Bars indicated thus 7x2-#5 etc. indicates 7 lines of bars with 2 lengths per line.
- Embedded Junction Box: Cut d1(E) and d2(E) bars to fit. Provide 2 additional d1(E) and d2(E) bars on each side of box alternate between d1(E) and d2(E) bars. Shift horizontal bars to clear box. Provide minimum 1/2" clearance to bars. See Sheet E-17 for additional details.
- Provide DX Type Deflection Fittings at all 1/2" cork filled expansion joints in Concrete Barrier Rail. See Sheet E-11 for details.



PARAPET AND MOMENT SLAB JOINT LAYOUT

See Note 4

Unit	Sta. "A"	Sta. "B"	Dim. "C"	Dim. "D"
1	3349+70.04	3350+60.04	NA	NA
3	3351+50.12	3352+40.12	NA	14'-10 1/2"
4	3352+40.12	3353+30.12	59'-11"	NA
5	3353+30.12	3354+20.12	NA	74'-10 1/2"

REVISIONS	
NAME	DATE

F.A.P. ROUTE 307 ILLINOIS ROUTE 64
 (NORTH AVENUE)
 OVER E.J.&E. AND U.P. R.R.
 MOMENT SLAB DETAILS

STRUCTURE NUMBER 022-W027
 FAP 307 SECTION 130 R-2
 DUPAGE COUNTY

STA. 3349+70.04 TO 3356+08.49
 SCALE: None DRAWN BY: MRK
 DATE: MAY 13, 2011 CHECKED BY: MJP

