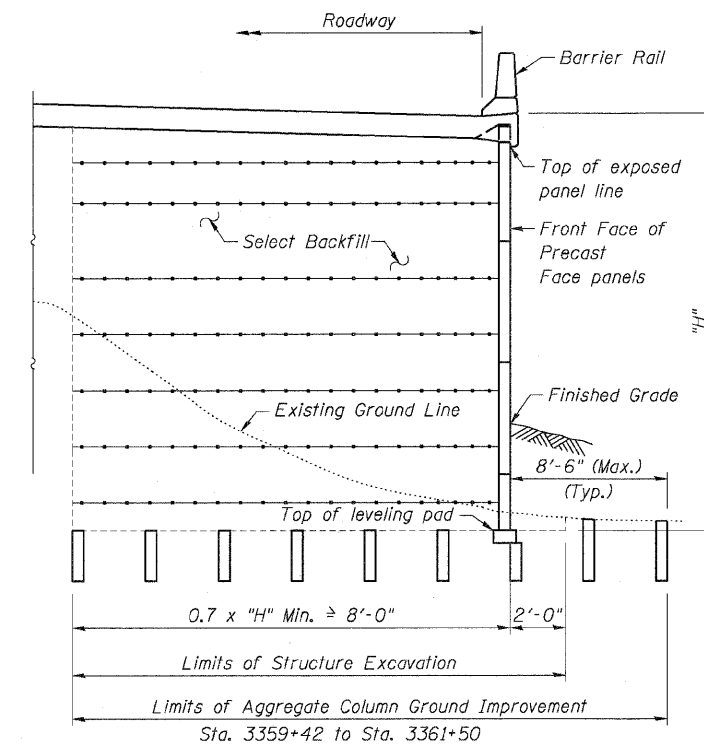
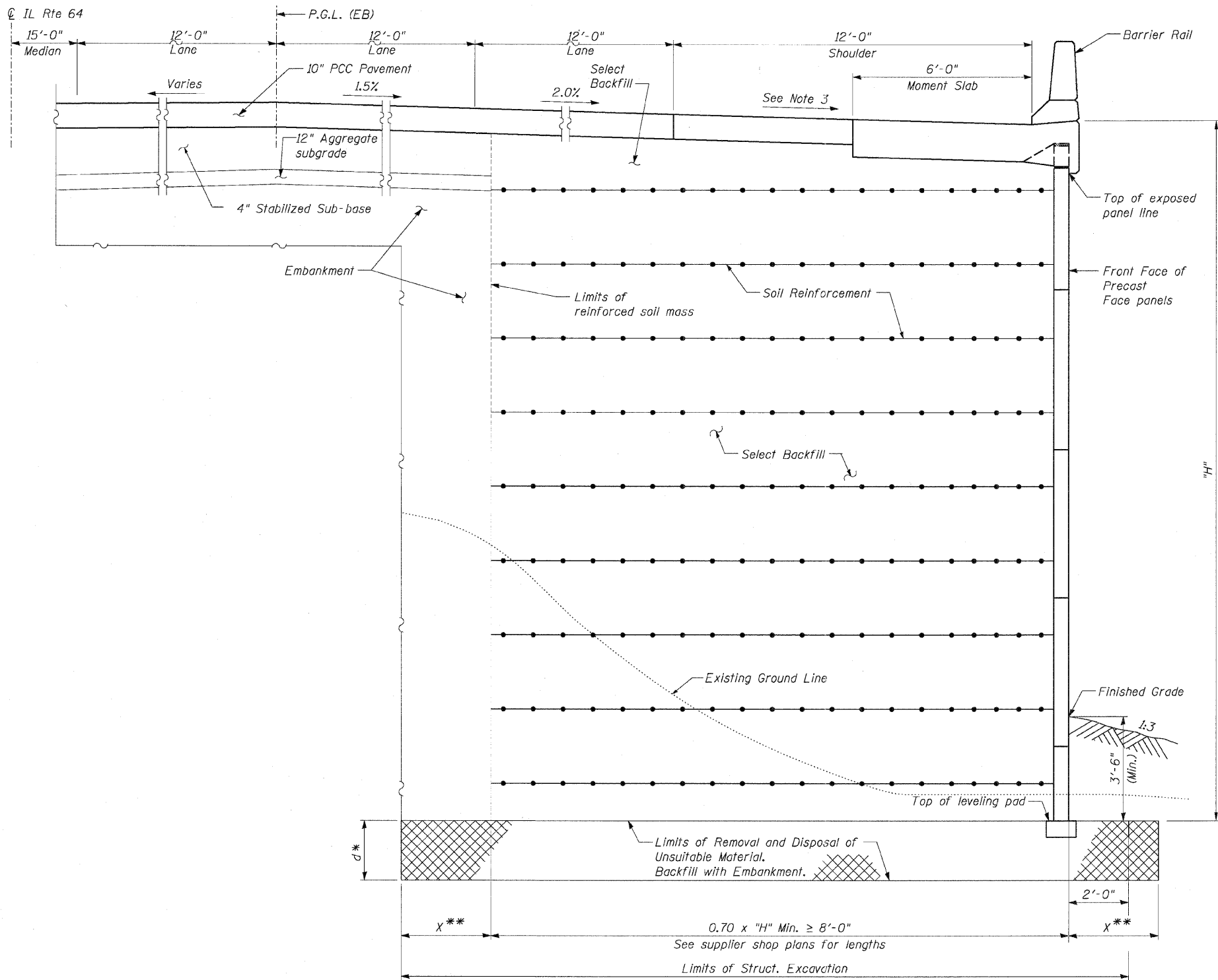


STATE OF ILLINOIS
 DEPARTMENT OF TRANSPORTATION

F.A.P. RTE.	SECTION	COUNTY	TOTAL SHEETS	SHEET NO.
307	130 R-2	DUPAGE, KANE	647	512
STA. 3356+37.74		TO STA. 3359+24.72		
FED. ROAD DIST. NO.		ILLINOIS FED. AID PROJECT		

62410



SECTION

NOTES:

- For General Notes, see Sheet NE2.
- For Moment Slab Details, see Sheets NE5 to NE6.
- Shoulder Slope: Sta. 3359+22.05 to Sta. 3359+73.00: Varies 2.0% to 4.0%
 Sta. 3359+73.00 to Sta. 3366+48.00: 4.0%

AGGREGATE COLUMN GROUND IMPROVEMENT:

- Aggregate Column Ground Improvement shall be designed and installed by the Contractor in accordance with the Special Provision for Aggregate Column Ground Improvement.
- For limits of Aggregate Column Ground Improvement, see Sheet NE1.
- The Top of Exposed Panel Elevations shown on the Elevation View are final elevations allowing for total settlement of 4 inches and settlement after completing wall or pavement construction of 1 inch. The MSE Wall vendor shall provide additional panel heights to allow for the settlement of the leveling pad during installation. The cost of any adjustment to precast face panels that are needed to compensate for settlement shall be included with Aggregate Column Ground Improvement.
- Vibrator compacted aggregate columns shall be constructed by the bottom feed method. Top feed will only be allowed if the columns are pre-bored the entire length and the Engineer determines that the open columns do not collapse during backfilling and vibration.

TYPICAL SECTION

Sta. 3359+21.39 to Sta. 3366+48.00
 (Looking Downstation)

Ground Improvement Performance Requirements:

- Post-construction settlement of MSE wall shall not exceed 1.0 Inch.
- Minimum factor of safety for global stability shall be 1.5.
- Minimum factor of safety for Nominal Equivalent Uniform Bearing Pressure shall be 2.5.
- Total settlement shall not exceed 4.0 inches.

* For Limits of Removal of Unsuitable Material see Sheet NW1.
 Over excavation beyond structure excavation and removal of unsuitable material will not be measured for payment.

** Edge Distance "X" is the same as the Removal Depth "d"



REVISIONS		F.A.P. ROUTE 307 ILLINOIS ROUTE 64 (NORTH AVENUE) OVER E.J.&E. AND U.P. R.R. TYPICAL SECTIONS
NAME	DATE	
		STRUCTURE NUMBER 022-W028 FAP 307 SECTION 130 R-2 DUPAGE COUNTY STA. 3358+66.25 TO 3366+48.00 SCALE: None DATE: MAY 13, 2011

DRAWN BY: MRK
 CHECKED BY: MJP

Sheet NE4 of 8