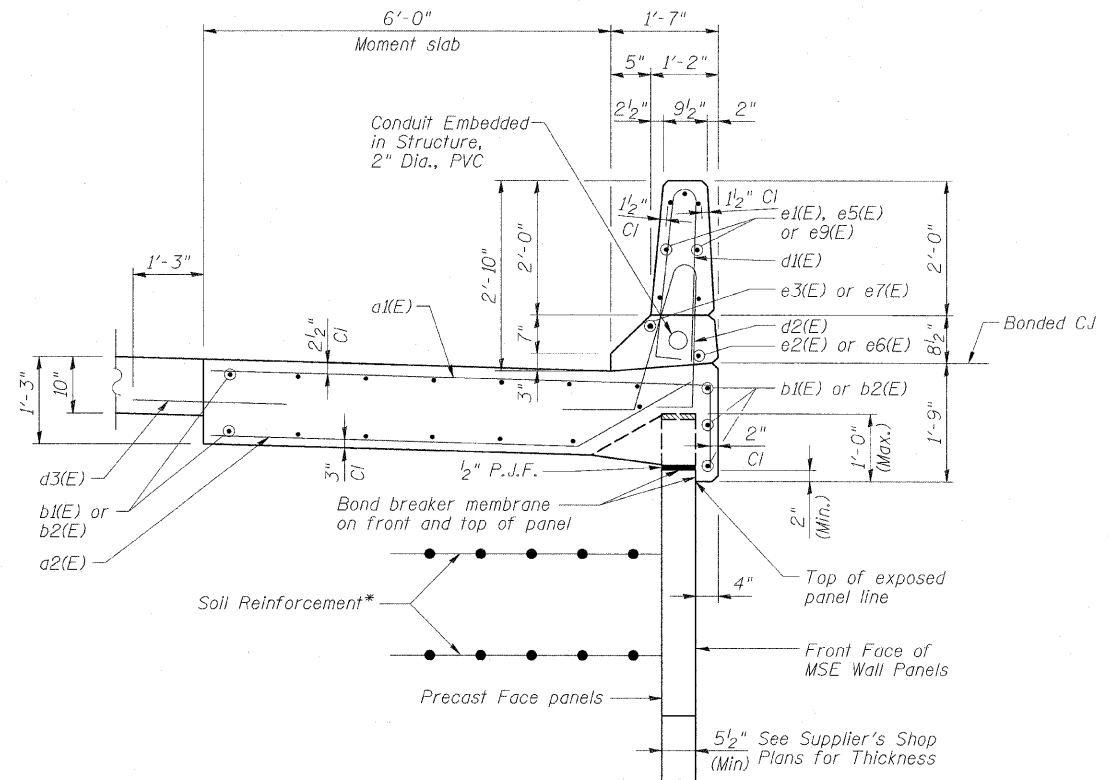


F.A.P. RTE.	SECTION	COUNTY	TOTAL SHEETS	SHEET NO.
307	130 R-2	DUPAGE, KANE	647	514
STA. 3356+37.74		TO STA. 3359+24.72		
FED. ROAD DIST. NO.	ILLINOIS	FED. AID PROJECT		

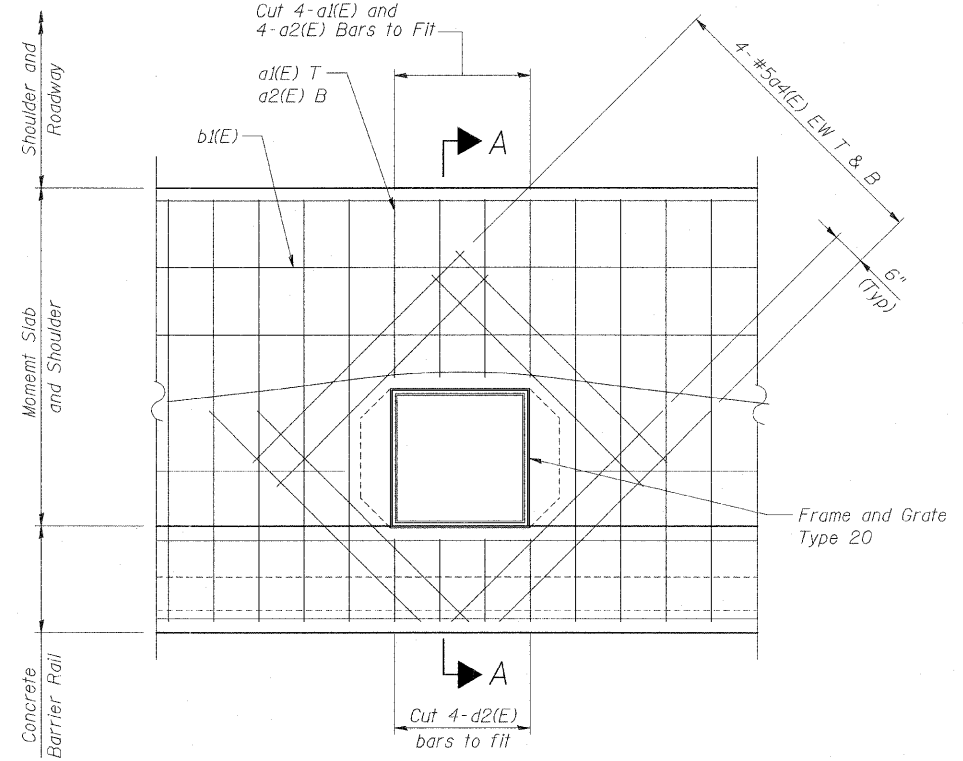
62410

STATE OF ILLINOIS
 DEPARTMENT OF TRANSPORTATION



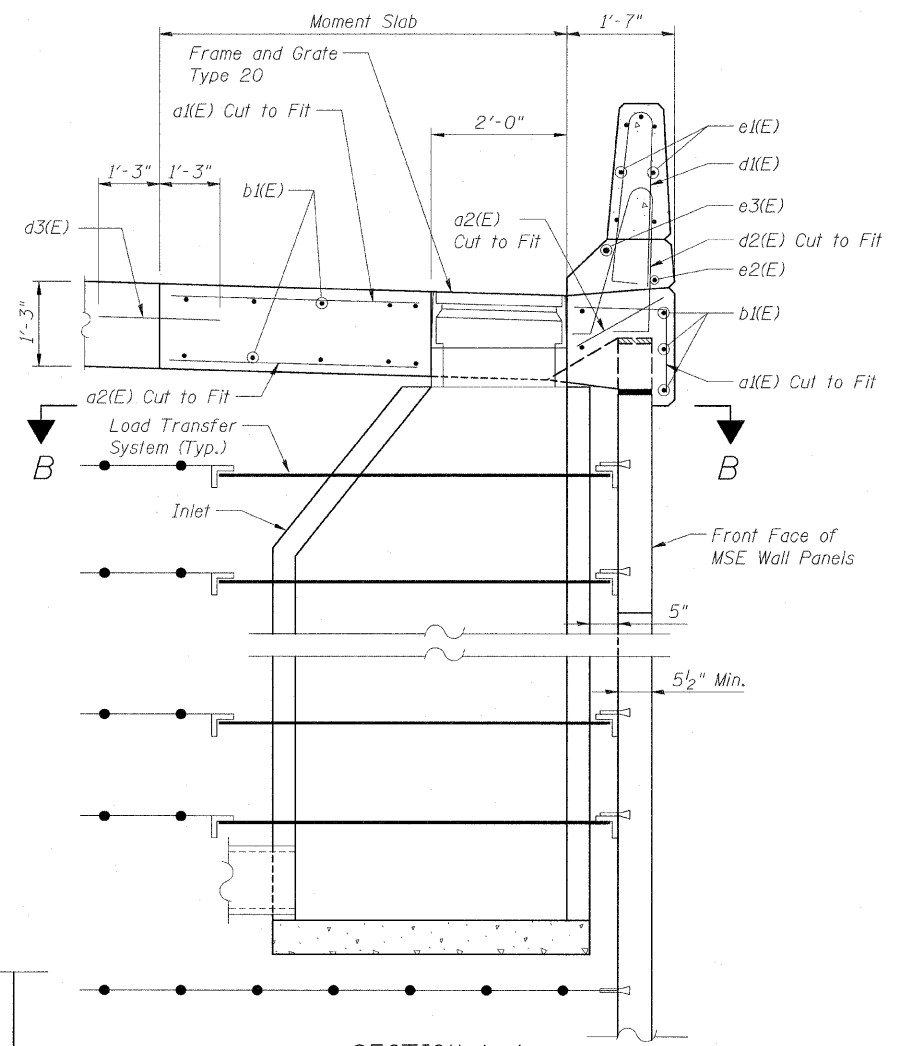
**TYPICAL CROSS SECTION
 THRU MOMENT SLAB & BARRIER**

* The M.S.E. Wall supplier's internal stability design shall account for the anchorage slab's bearing pressure surcharge of 0.24 ksf and horizontal sliding force of 0.5 kips/ft. of wall.



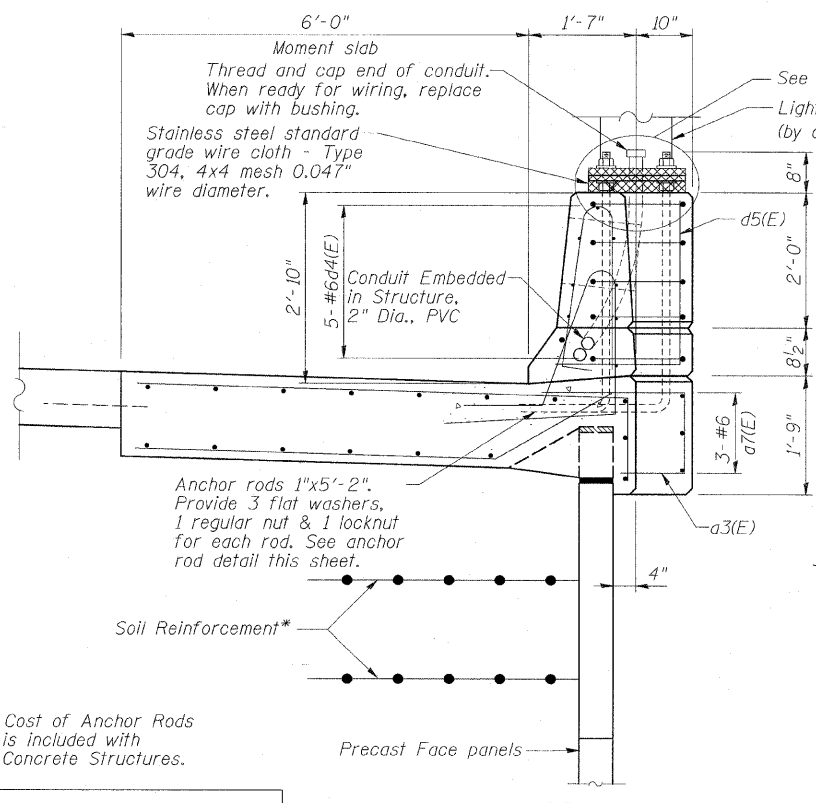
**DETAIL 1-MOMENT SLAB AND
 BARRIER AT CATCH BASIN**

NOTES:
 1. Provide minimum 2" clearance between reinforcing bars and Frame and Grate Type 20.



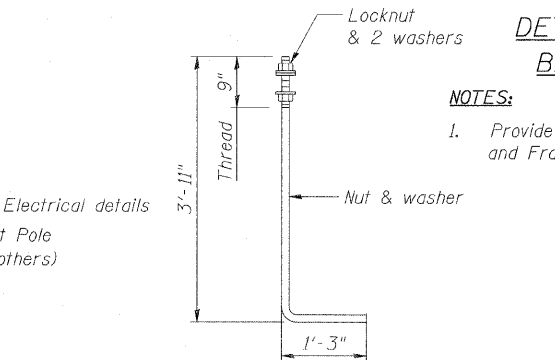
SECTION A-A
 Units 2, 5, 7 and 9

NOTES:
 1. For General Notes, see Sheet NE2.
 2. For Bar Bending Diagrams, see Sheet NE8.



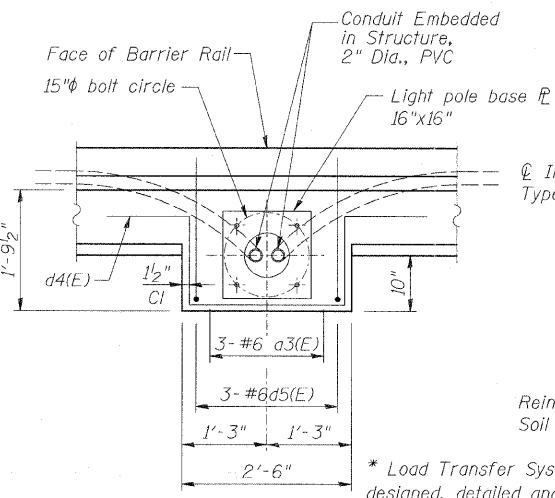
SECTION

Note: Cost of Anchor Rods is included with Concrete Structures.



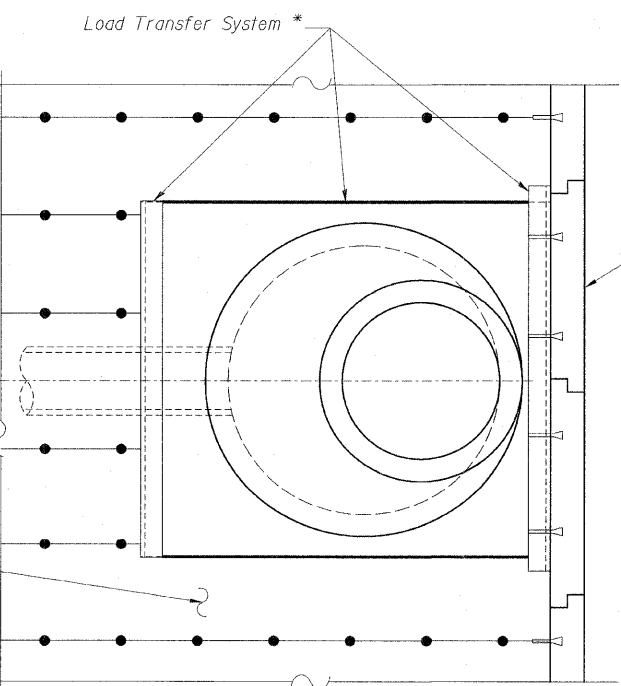
ANCHOR ROD

1" Diameter (ASTM F 1554 Grade 105)
 Included in the cost of Concrete Structures.



PLAN

* Load Transfer System to be designed, detailed and installed by the MSE Wall Manufacturer. Submit plans to the Engineer for review and approval.



SECTION B-B

REVISIONS	
NAME	DATE

F.A.P. ROUTE 307 ILLINOIS ROUTE 64
 (NORTH AVENUE)
 OVER E.J.&E. AND U.P. R.R.
 MOMENT SLAB DETAILS
 AT DRAINAGE STRUCTURE
 STRUCTURE NUMBER 022-W028
 FAP 307 SECTION 130 R-2
 DUPAGE COUNTY
 STA. 3358+66.25 TO 3366+48.00
 SCALE: None DRAWN BY: MRK
 DATE: NOVEMBER 1, 2011 CHECKED BY: MJP

Sheet NE6 of 8

