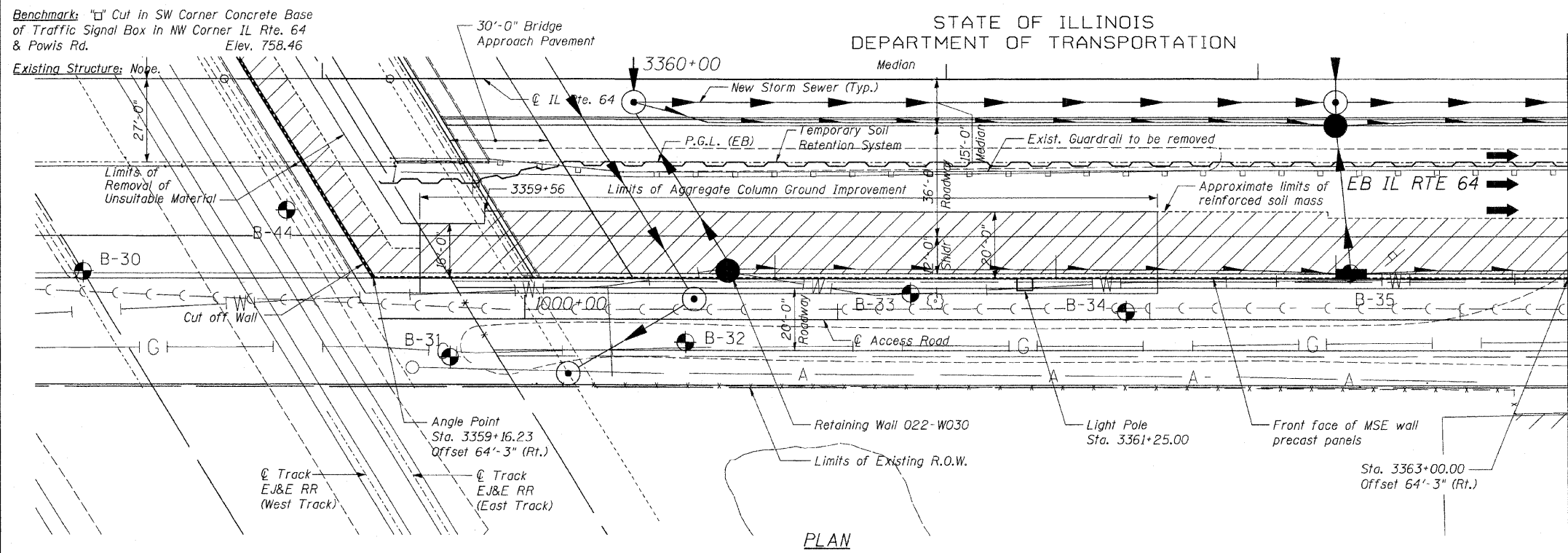


STATE OF ILLINOIS
 DEPARTMENT OF TRANSPORTATION

F.A.P. RTE.	SECTION	COUNTY	TOTAL SHEETS	SHEET NO.
307	130 R-2	DUPAGE, KANE	647	525
STA. 3356+37.74		TO STA. 3359+24.72		
FED. ROAD DIST. NO.		ILLINOIS FED. AID PROJECT		62410



DESIGN SPECIFICATIONS

AASHTO Standard Specifications for Highway Bridges, 17th Edition-2002

DESIGN STRESSES

FIELD UNITS

$f'_c = 3,500$ psi
 $f_y = 60,000$ psi (Reinforcement)

PRECAST UNITS

$f'_c = 4,500$ psi (Precast Face Panels)

INDEX OF SHEETS:

- SE1 General Plan
- SE2 General Plan
- SE3 General Plan
- SE4 Typical Sections
- SE5 Typical Sections
- SE6 Moment Slab Details
- SE7 Moment Slab Details at Drainage Structure
- SE8 Coping Details
- SE9 Reinforcement Details and Bill of Material

NOTES:

1. For General Notes see Sheet SE2.
2. The face of abutment station is measured to an offset equal to 63'-9" (the assumed back face of the MSE wall panels).
3. The vertical scale of the elevation view has been exaggerated to show detail.
4. Arrange Aggregate Columns to avoid conflicts with abutment piles.
5. For Temporary Soil Retention System, see Sheet TS2.

BILL OF MATERIAL

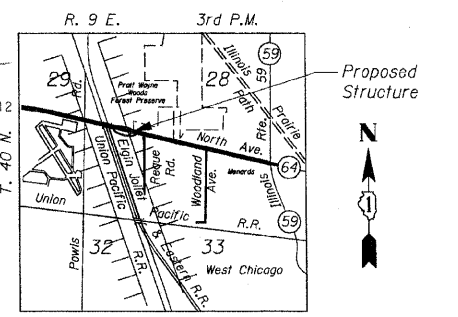
Item	Unit	Quantity
Removal and Disposal of Unsuitable Material	Cu Yd	185
Structure Excavation	Cu Yd	5,230
Concrete Structures	Cu Yd	316.9
Protective Coat	Sq Yd	737
Reinforcement Bars, Epoxy Coated	Pound	51,110
Temporary Soil Retention System	Sq Ft	6,130
Mechanically Stabilized Earth Retaining Wall	Sq Ft	16,236
Aggregate Column Ground Improvement	L. Sum	0.25
Conduit Embedded in Structure, 2" Dia., PVC	Foot	689

APPROVED
 FOR STRUCTURAL ADEQUACY ONLY

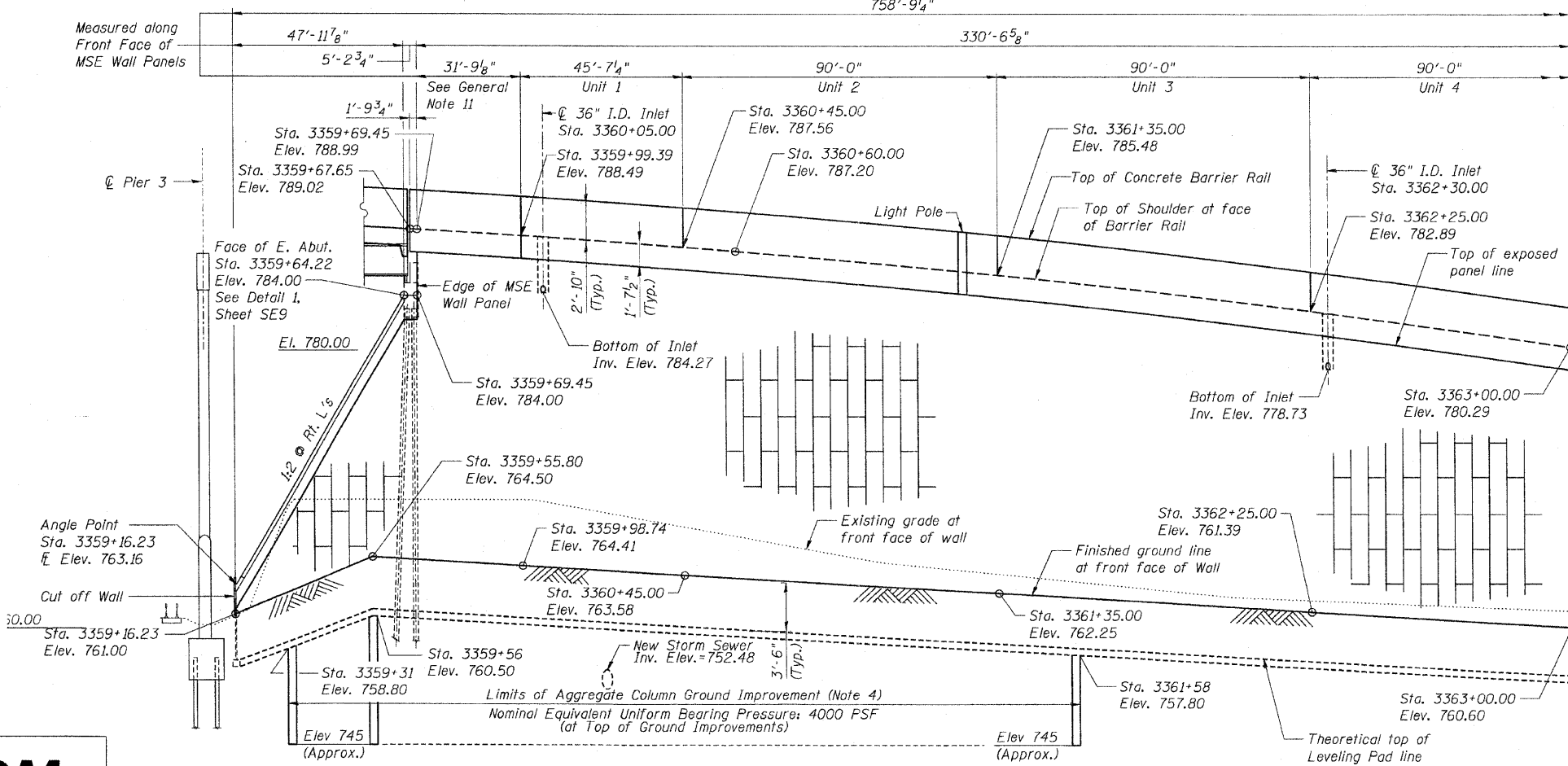
Matthew J. Pregmon
 ENGINEER OF BRIDGES AND STRUCTURES



EXPIRATION DATE: 11-30-2012



LOCATION SKETCH
 Not to Scale Sheet SE1 of 9



ELEVATION
 (Looking North at front face of wall)



REVISIONS	
NAME	DATE

F.A.P. ROUTE 307 ILLINOIS ROUTE 64
 (NORTH AVENUE)
 OVER E.J. & E. AND U.P. R.R.
 GENERAL PLAN
 NORTH AVENUE
 STRUCTURE NUMBER 022-W030
 FAP 307 SECTION 130 R-2
 DUPAGE COUNTY
 STA. 3359+16.23 TO 3366+75.00
 SCALE: None DRAWN BY: MRK
 DATE: NOVEMBER 1, 2011 CHECKED BY: MJP