

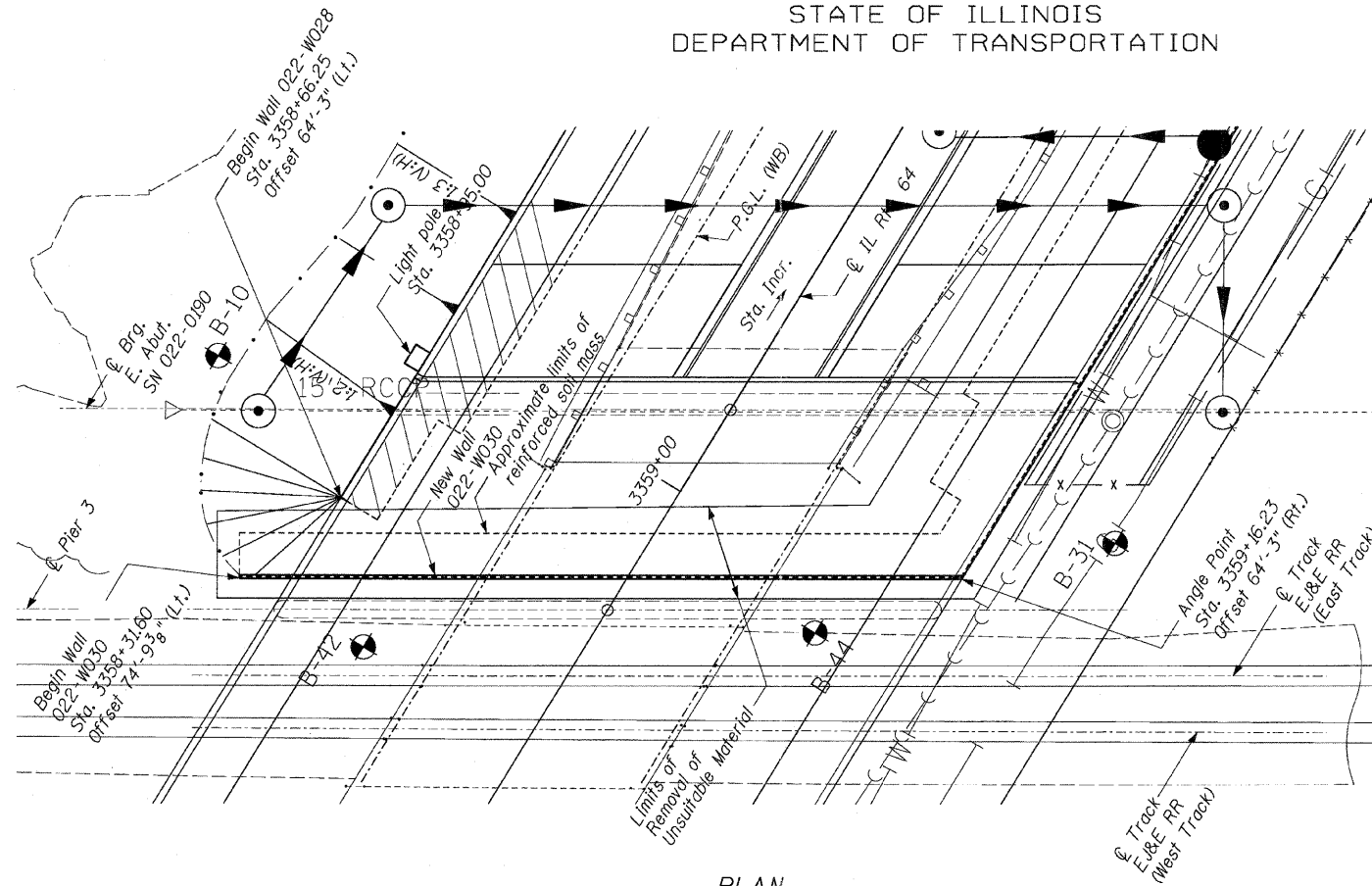
STATE OF ILLINOIS
 DEPARTMENT OF TRANSPORTATION

| F.A.P. RTE. | SECTION | COUNTY | TOTAL SHEETS | SHEET NO. |
|---------------------|---------|---------------------------|--------------|-----------|
| 307 | 130 R-2 | DUPAGE, KANE | 647 | 527 |
| STA. 3356+37.74 | | TO STA. 3359+24.72 | | |
| FED. ROAD DIST. NO. | | ILLINOIS FED. AID PROJECT | | |

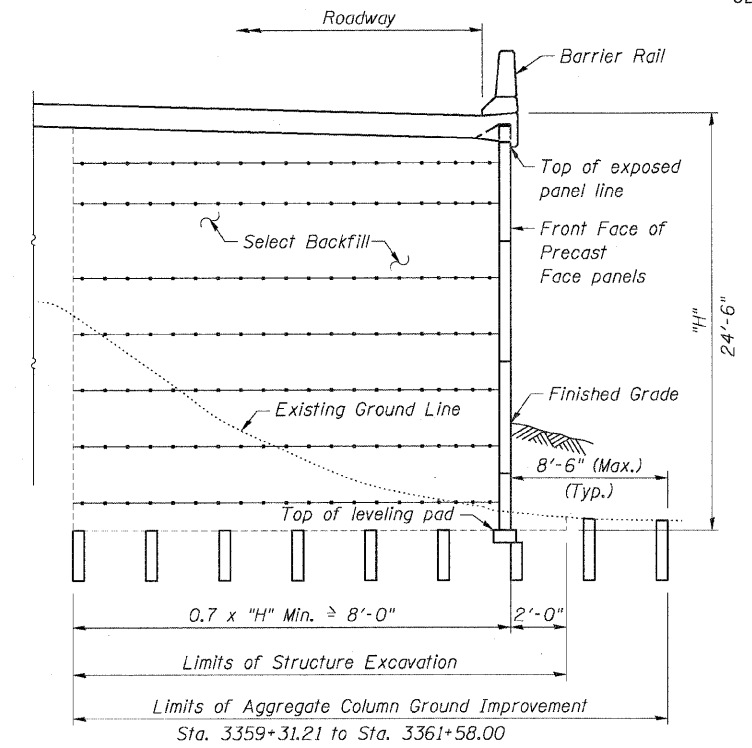
62410

Benchmark: "1" Cut in SW Corner Concrete Base of Traffic Signal Box in NW Corner IL Rte. 64 & Powis Rd. Elev. 758.46

Existing Structure: None.



PLAN



SECTION

NOTES:

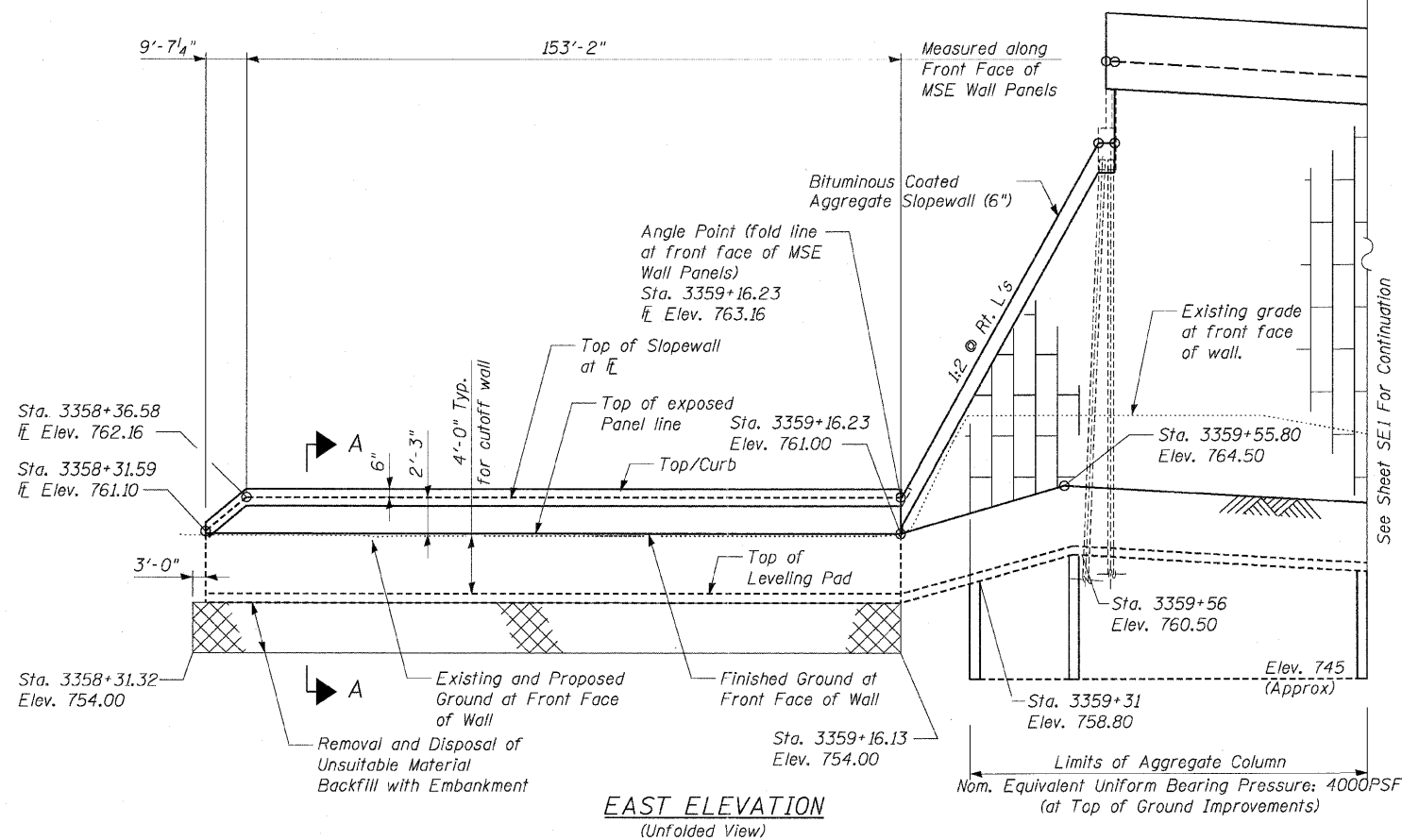
- For General Notes, see Sheet SE2.
- For Legend and Abbreviations, see Sheet SE1.
- Stations and Offsets are measured from the \odot IL Rte 64 to the Front Face of the MSE Wall panels.
- For Section A-A see Sheet SE5.

AGGREGATE COLUMN GROUND IMPROVEMENT:

- Aggregate Column Ground Improvement shall be designed and installed by the Contractor in accordance with the Special Provision for Aggregate Column Ground Improvement.
- For limits of Aggregate Column Ground Improvement, see Sheet SE1.
- The Top of Exposed Panel Elevations shown on the Elevation View are final elevations allowing for total settlement of 4 inches and settlement after completing wall or pavement construction of 1 inch. The MSE Wall vendor shall provide additional panel heights to allow for the settlement of the leveling pad during installation. The cost of any adjustment to precast face panels that are needed to compensate for settlement shall be included with Aggregate Column Ground Improvement.
- Vibrator compacted aggregate columns shall be constructed by the bottom feed method. Top feed will only be allowed if the columns are pre-bored the entire length and the Engineer determines that the open columns do not collapse during backfilling and vibration.

Ground Improvement Performance Requirements:

- Post-construction settlement of MSE wall shall not exceed 1.0 inch.
- Minimum factor of safety for global stability shall be 1.5.
- Minimum factor of safety for Nominal Equivalent Uniform Bearing Pressure shall be 2.5.
- Total settlement shall not exceed 4.0 inches.



EAST ELEVATION
 (Unfolded View)

Sheet SE3 of 9



| REVISIONS | | F.A.P. ROUTE 307 ILLINOIS ROUTE 64 (NORTH AVENUE) OVER E.J.&E. AND U.P. R.R. GENERAL PLAN |
|-----------|------|---|
| NAME | DATE | |
| | | STRUCTURE NUMBER 022-W030 FAP 307 SECTION 130 R-2 DUPAGE COUNTY STA. 3359+16.23 TO 3366+75.00 SCALE: None DATE: MAY 13, 2011 |
| | | |
| | | |
| | | |
| | | |

DRAWN BY: MRK
 CHECKED BY: MJP