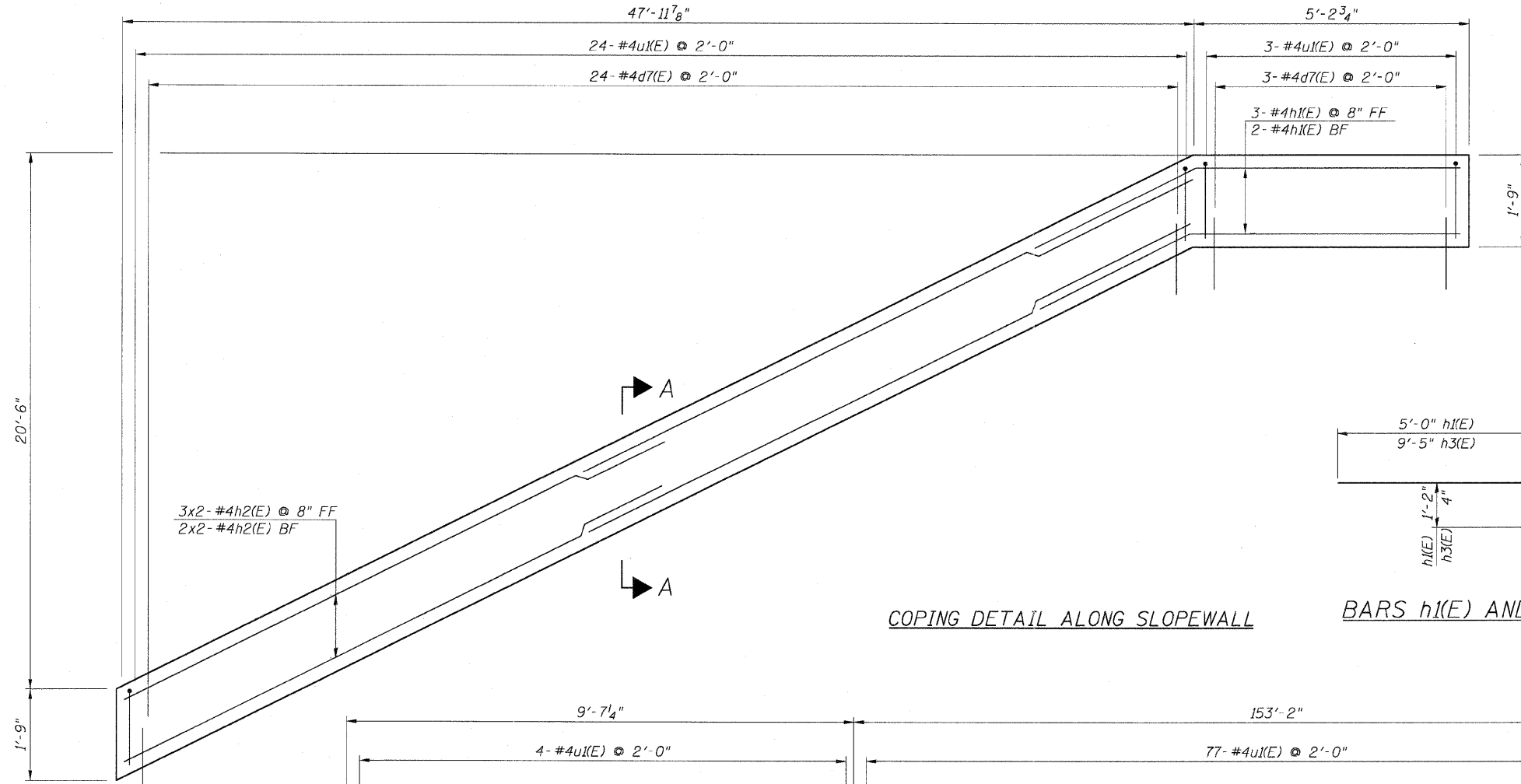


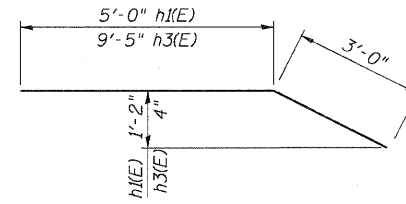
STATE OF ILLINOIS  
 DEPARTMENT OF TRANSPORTATION

F.A.P. RTE.	SECTION	COUNTY	TOTAL SHEETS	SHEET NO.
307	130 R-2	DUPAGE, KANE	647	532
STA. 3356+37.74		TO STA. 3359+24.72		
FED. ROAD DIST. NO.		ILLINOIS FED. AID PROJECT		

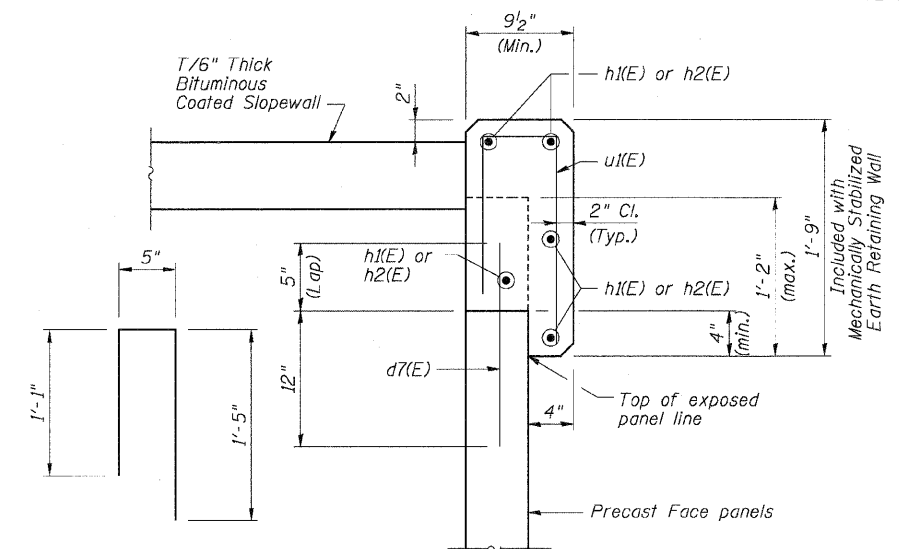
62410



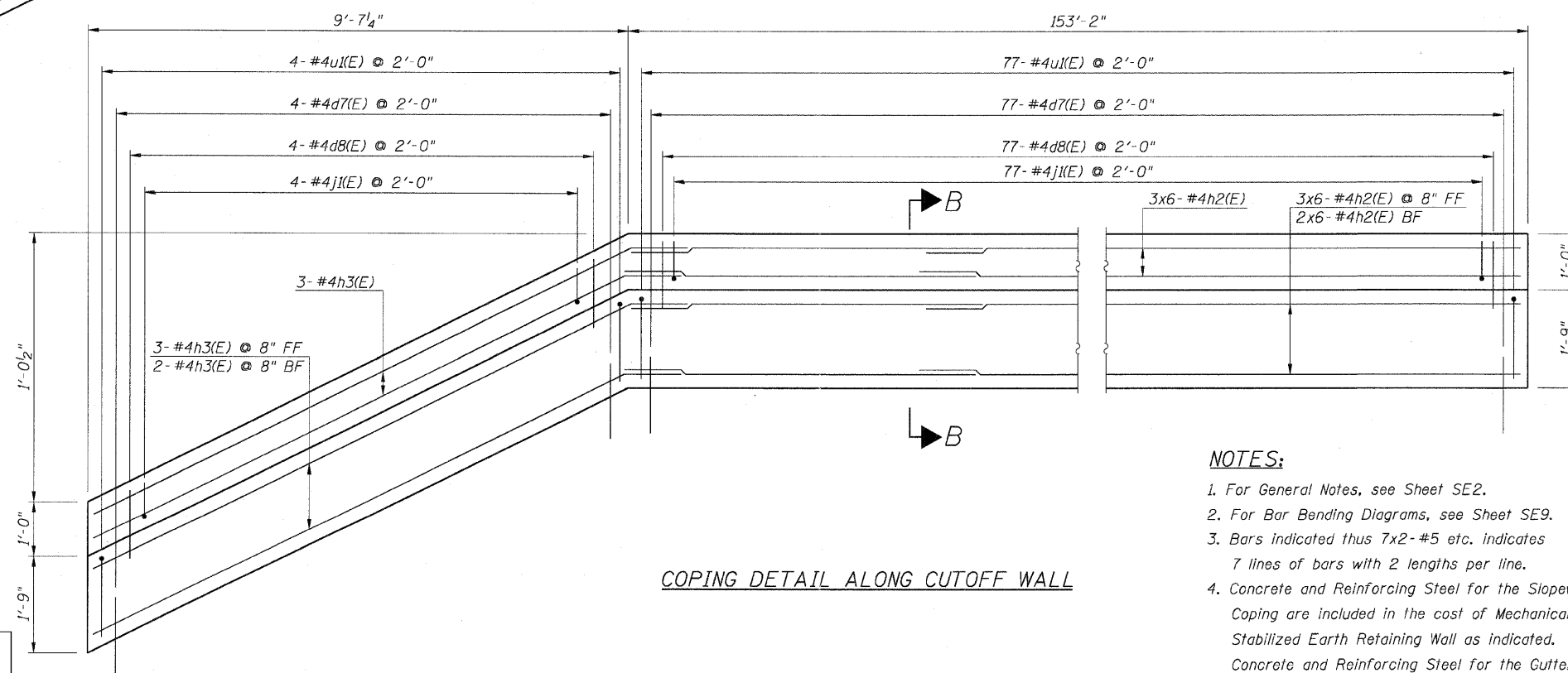
COPING DETAIL ALONG SLOPEWALL



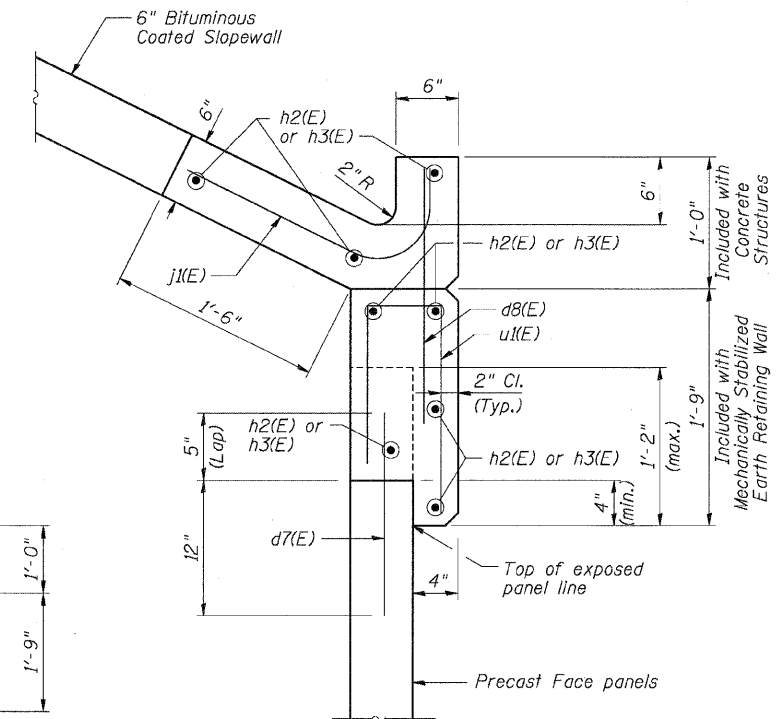
BARS h1(E) AND h3(E)



SECTION A-A



COPING DETAIL ALONG CUTOFF WALL



SECTION B-B

NOTES:

1. For General Notes, see Sheet SE2.
2. For Bar Bending Diagrams, see Sheet SE9.
3. Bars indicated thus 7x2-#5 etc. indicates 7 lines of bars with 2 lengths per line.
4. Concrete and Reinforcing Steel for the Slopewall Coping are included in the cost of Mechanically Stabilized Earth Retaining Wall as indicated. Concrete and Reinforcing Steel for the Gutter will be paid for separately.

REVISIONS	
NAME	DATE

Sheet SE8 of 9

F.A.P. ROUTE 307 ILLINOIS ROUTE 64  
 (NORTH AVENUE)  
 OVER E.J.&E. AND U.P. R.R.  
 COPING DETAILS

STRUCTURE NUMBER 022-W030  
 FAP 307 SECTION 130 R-2  
 DUPAGE COUNTY  
 STA. 3359+16.23 TO 3366+75.00

SCALE: None  
 DATE: MAY 13, 2011

DRAWN BY: MRK  
 CHECKED BY: M.J.P.

