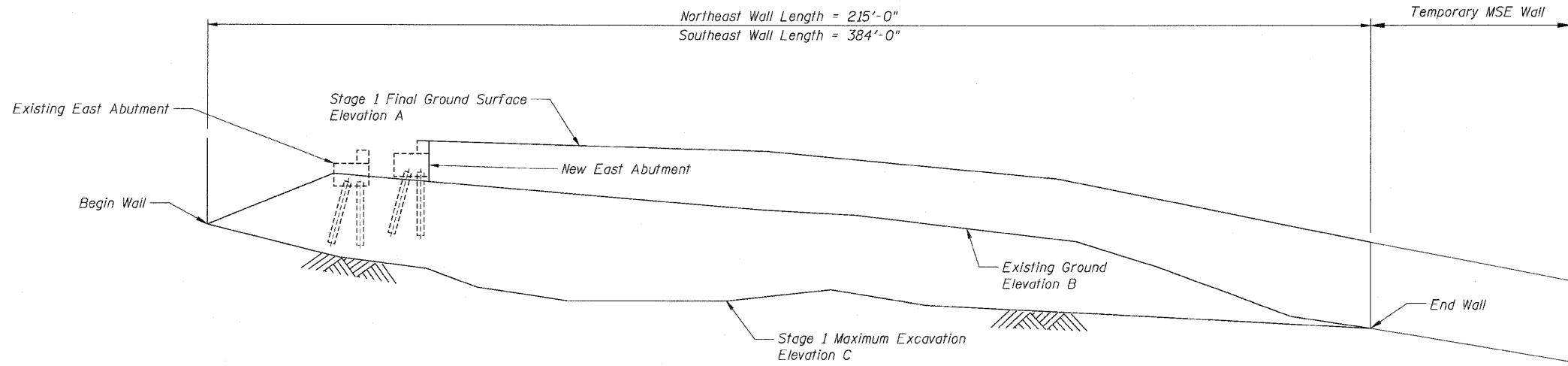


STATE OF ILLINOIS
 DEPARTMENT OF TRANSPORTATION

F.A.P. RTE.	SECTION	COUNTY	TOTAL SHEETS	SHEET NO.
307	130 R-2	DUPAGE, KANE	647	535
STA.		TO STA.		
FED. ROAD DIST. NO.		ILLINOIS FED. AID PROJECT		

62410



TYPICAL ELEVATION - TEMPORARY SOIL RETENTION SYSTEM
 Looking North

Wall Northeast of Bridge						Wall Southeast of Bridge					
Note	Station	Offset	Elev "A"	Elev "B"	Elev "C"	Note	Station	Offset	Elev "A"	Elev "B"	Elev "C"
Begin Wall	3358+85	32'-7" (Lt.)	790.45	782.64	782.64	Begin Wall	3359+16	32'-7" (Rt.)	--	771.78	771.78
	3358+90	32'-7" (Lt.)	790.42	785.52	781.03	Back E. Abut	3359+47.42	32'-7" (Rt.)	789.88	783.51	769.63
	3358+95	32'-7" (Lt.)	790.37	785.53	778.94	Angle Point	3359+77.41	26'-6" (Rt.)	789.53	783.27	772.42
	3359+00	32'-7" (Lt.)	790.33	785.45	778.08		3360+00	26'-6" (Rt.)	789.17	782.17	771.91
Back E. Abut	3359+14.55	32'-7" (Lt.)	790.16	785.07	777.95		3361+00	26'-6" (Rt.)	787.22	778.35	770.13
	3359+35	28'-5" (Lt.)	790.03	784.91	777.95		3362+00	26'-6" (Rt.)	784.55	774.06	770.02
Angle Point	3359+44.55	26'-6" (Lt.)	789.97	784.55	779.06	End Wall	3363+00	26'-6" (Rt.)	780.92	770.04	770.04
	3360+00	26'-6" (Lt.)	789.18	782.19	777.71						
End Wall	3361+00	26'-6" (Lt.)	787.22	778.25	778.25						

Stations and Offset are measured from the \varnothing IL Rte 64 to the inside face (closer to \varnothing IL Rte 64) of the Temporary Soil Retention System.

NOTES:

1. A cantilevered sheet piling design does not appear feasible and additional members or other retention systems may be necessary. The Contractor shall submit a temporary soil retention system design including plan details and calculations for review and acceptance by the Engineer.
2. For locations of Temporary Soil Retention see Sheets NE1 and SE1.
3. The quantity of Temporary Soil Retention System is calculated between Elevation "A" and Elevation "C" behind the Abutment. The quantity of Temporary Soil Retention System is calculated between Elevation "B" and Elevation "C" in front of the Abutment.

Sheet TS2 of 2



REVISIONS	
NAME	DATE

F.A.P. ROUTE 307 ILLINOIS ROUTE 64
 (NORTH AVENUE)
 OVER E.J.&E. AND U.P. R.R.
 TEMPORARY SOIL RETENTION SYSTEM

FAP 307 SECTION 130 R-2
 DUPAGE COUNTY

SCALE: None
 DATE: MAY 13, 2011

DRAWN BY: MRK
 CHECKED BY: MJP