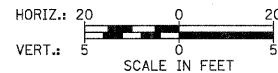
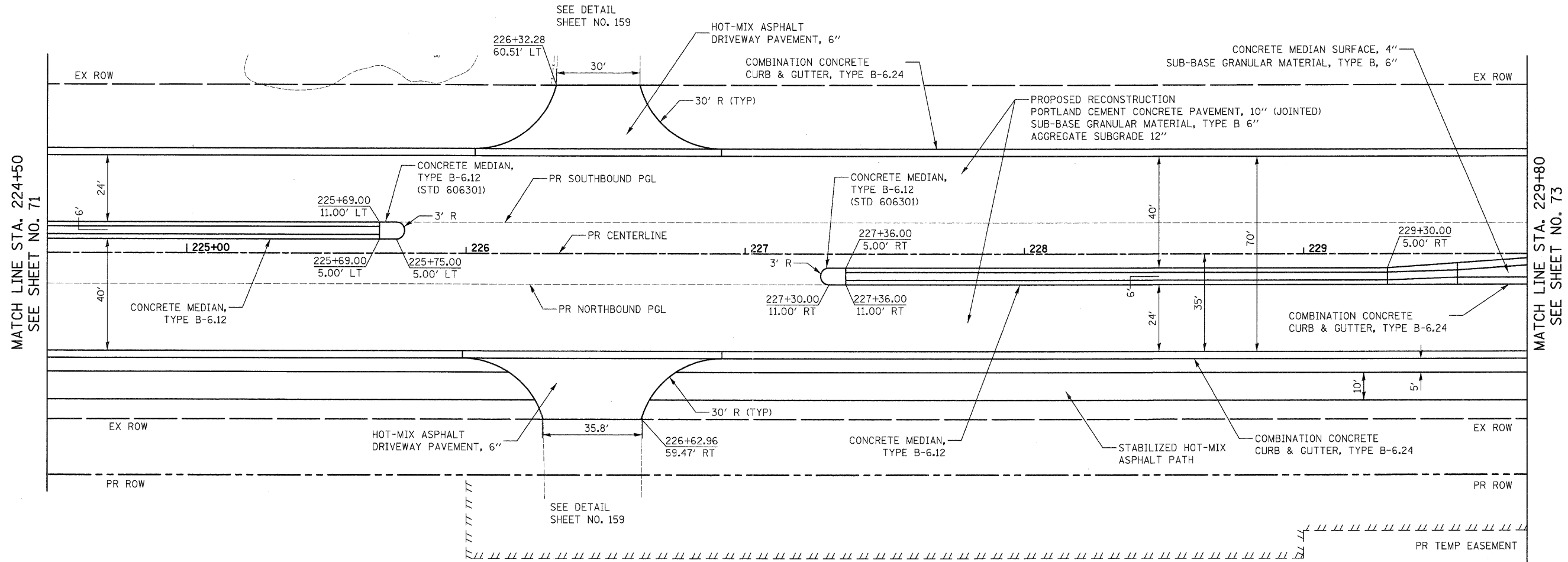


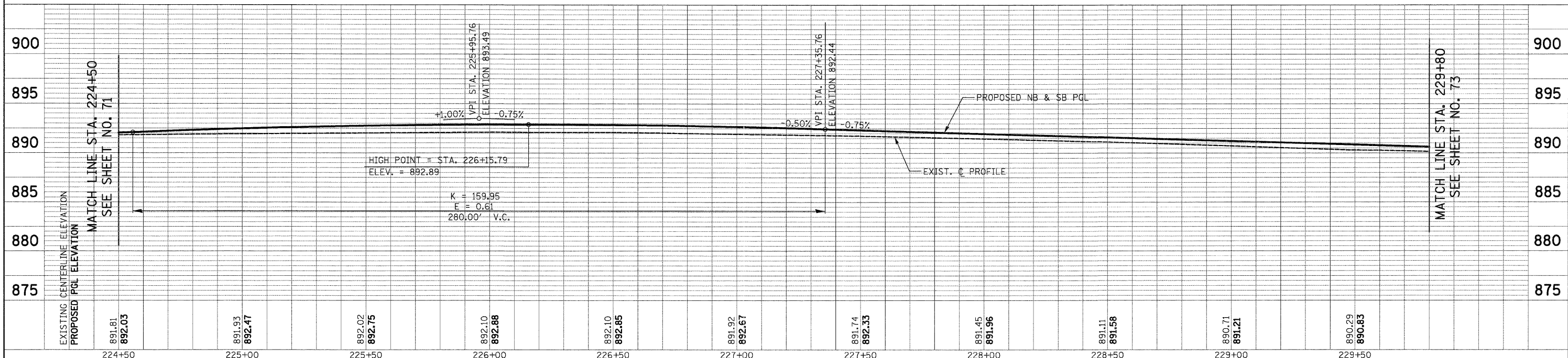


DATE	
BY	
REVIEWED	
PLANNED	
NOTED	
FILED	
NO.	

DATE	
BY	
REVIEWED	
PLANNED	
NOTED	
FILED	
NO.	



ILLINOIS ROUTE 31



FILE NAME =	USER NAME = dse	DESIGNED - KWH	REVISED -	<b>STATE OF ILLINOIS DEPARTMENT OF TRANSPORTATION</b>	<b>PLAN AND PROFILE</b>		F.A.U. RIE 3887	SECTION 96-00209-01-PV	COUNTY McHENRY	TOTAL SHEETS 271	SHEET NO. 72
Y:\2278_Virginia_Klassen\cad\sheet\08-Plan and Profile\2278_P&P_04.dgn		DRAWN - DTE	REVISED -		SCALE: 1" = 20'	SHEET NO. 4 OF 19 SHEETS	STA. 224+50 TO STA. 229+80	FED. ROAD DIST. NO. 1 ILLINOIS	FED. AID PROJECT HPP-4064(003)	<b>CONTRACT NO. 63553</b>	
PLOT SCALE = 28.0000' / in.		CHECKED - GAB	REVISED -								
PLOT DATE = 10/24/2011		DATE - 10/24/11	REVISED -								