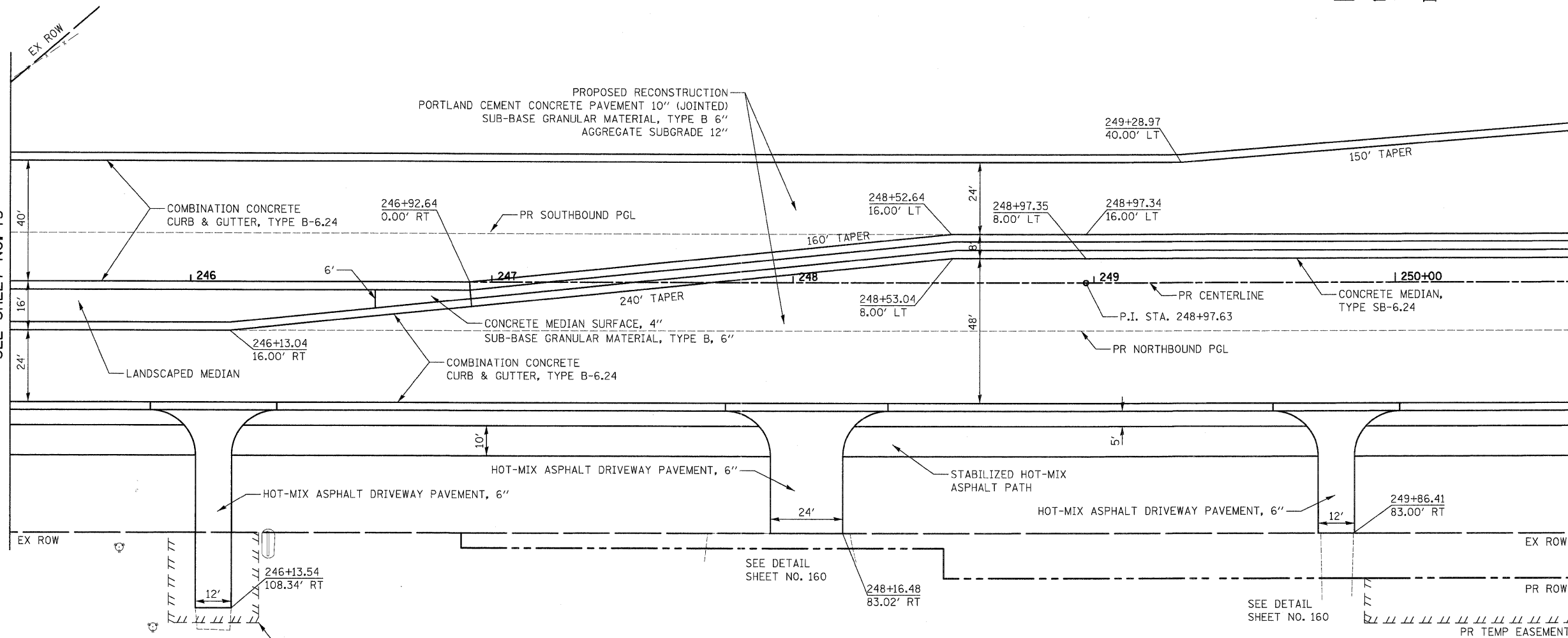


PLAN	DATE
BY	
REVIEWED	
PLOTTED	
NOTE BOOK	
NO.	
NO.	
NO.	
NO.	

PROFILE	DATE
BY	
REVIEWED	
PLOTTED	
NOTE BOOK	
NO.	
NO.	
NO.	
NO.	

MATCH LINE STA. 245+40
SEE SHEET NO. 75

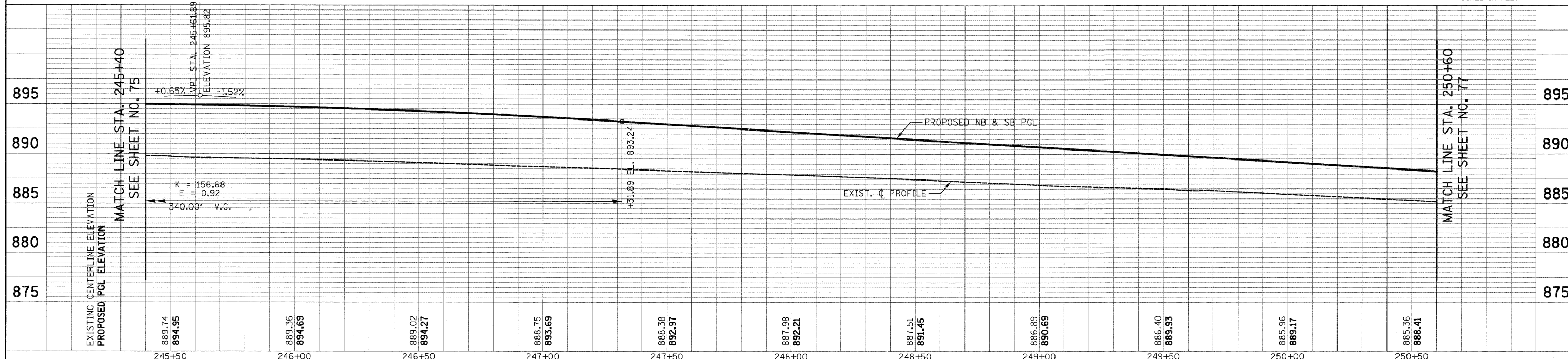
MATCH LINE STA. 250+60
SEE SHEET NO. 77



- NOTES:
- ALL DRIVEWAY RADII SHALL BE 15' UNLESS OTHERWISE NOTED



ILLINOIS ROUTE 31



FILE NAME =	USER NAME = dte	DESIGNED - KWH	REVISED -	STATE OF ILLINOIS DEPARTMENT OF TRANSPORTATION	PLAN AND PROFILE	F.A.J. RTE. 3887	SECTION 96-00209-01-PV	COUNTY McHENRY	TOTAL SHEETS 271	SHEET NO. 76		
Y:\2278 Virginia Klassen\load\sheet\08-Plan	Profile\2278_P&P_08.dgn	DRAWN - DTE	REVISED -			SCALE: 1" = 20'	SHEET NO. 8 OF 19 SHEETS	STA. 245+40	TO STA. 250+60	CONTRACT NO. 63553		
		CHECKED - GAB	REVISED -			FED. ROAD DIST. NO. 1 ILLINOIS FED. AID PROJECT HPP-4064003						
		DATE - 10/24/11	REVISED -									