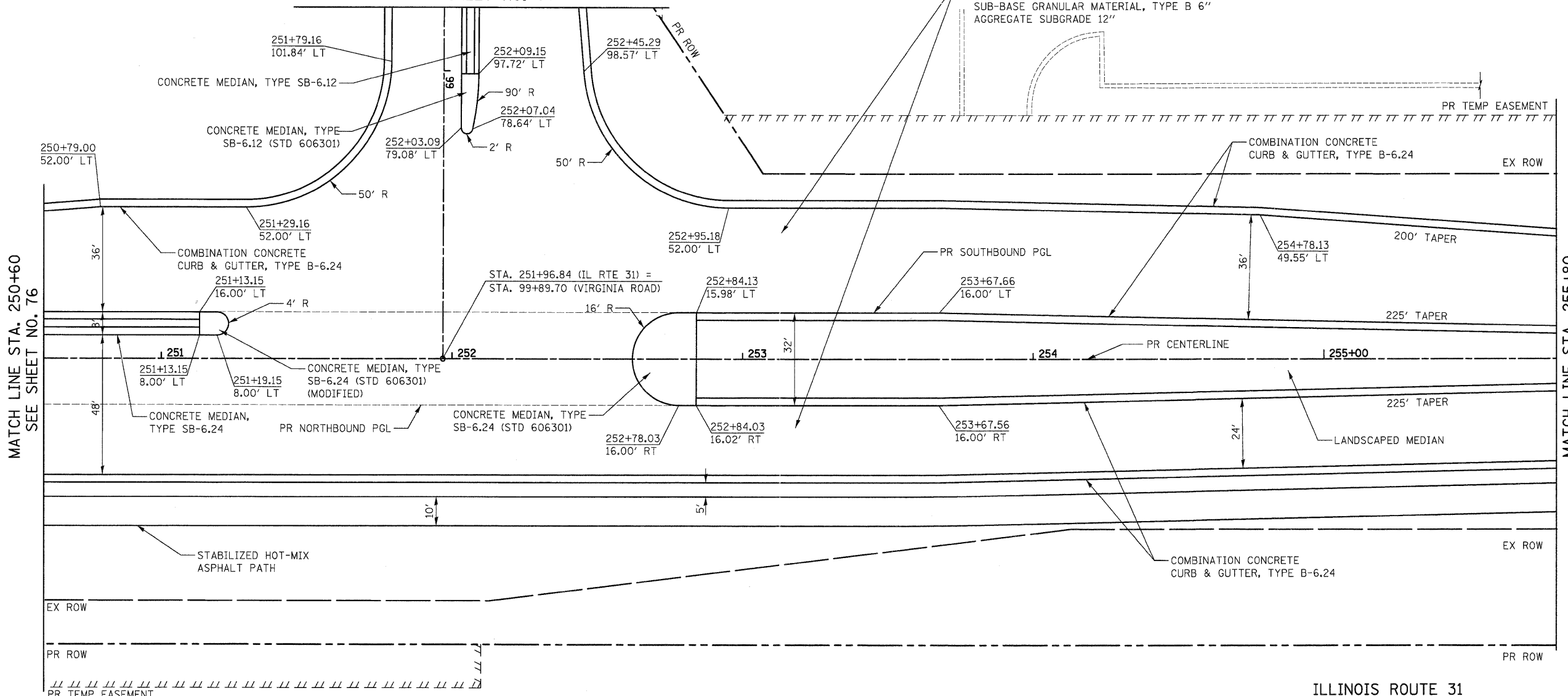
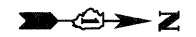


PLAN	SURVEYED	DATE
	PLOTTED	
	ALIGNED	
	CHECKED	
	FILE NAME	
	NO.	

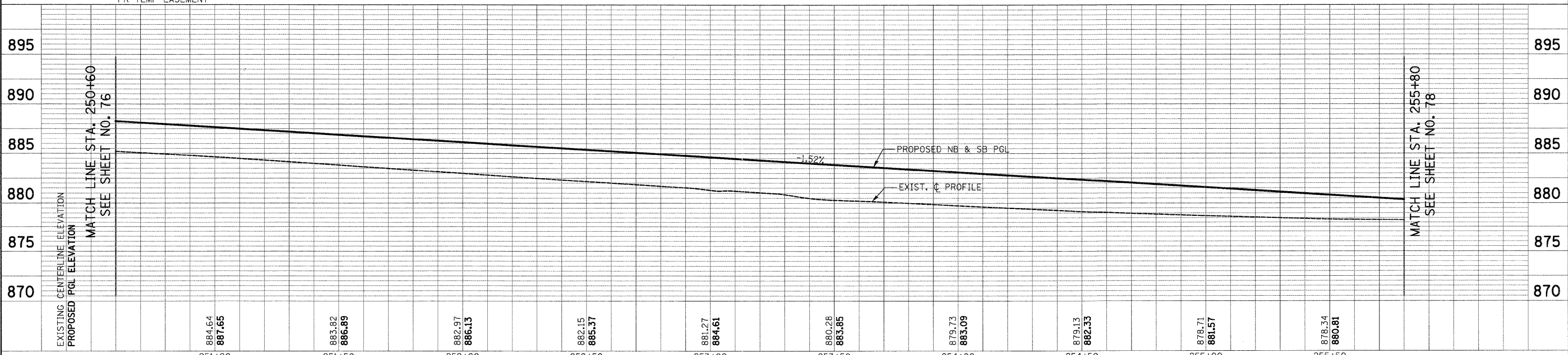
PROFILE	SURVEYED	DATE
	PLOTTED	
	GRADES CHECKED	
	STRUCTURE NOTATIONS CHKD	
	NO.	

VIRGINIA ROAD MATCH LINE STA. 98+80
SEE SHEET NO. 86

PROPOSED RECONSTRUCTION
PORTLAND CEMENT CONCRETE PAVEMENT, 10" (JOINTED)
SUB-BASE GRANULAR MATERIAL, TYPE B 6"
AGGREGATE SUBGRADE 12"



ILLINOIS ROUTE 31



FILE NAME =	USER NAME = dte	DESIGNED - KWH	REVISED -	STATE OF ILLINOIS DEPARTMENT OF TRANSPORTATION	PLAN AND PROFILE	F.A.U. RTE. 3887	SECTION 96-00209-01-PV	COUNTY McHENRY	TOTAL SHEETS 271	SHEET NO. 77		
Y:\2278 Virginia Klassen\cad\sheet\28-Plan	andProfile\2278_P&P_09.dgn	DRAWN - DTE	REVISED -			SCALE: 1" = 20'	SHEET NO. 9 OF 19 SHEETS	STA. 250+60	TO STA. 255+80	CONTRACT NO. 63553		
		CHECKED - GAB	REVISED -			FED. ROAD DIST. NO. 1 ILLINOIS FED. AID PROJECT HPP-40640031						
		DATE - 10/24/11	REVISED -									