

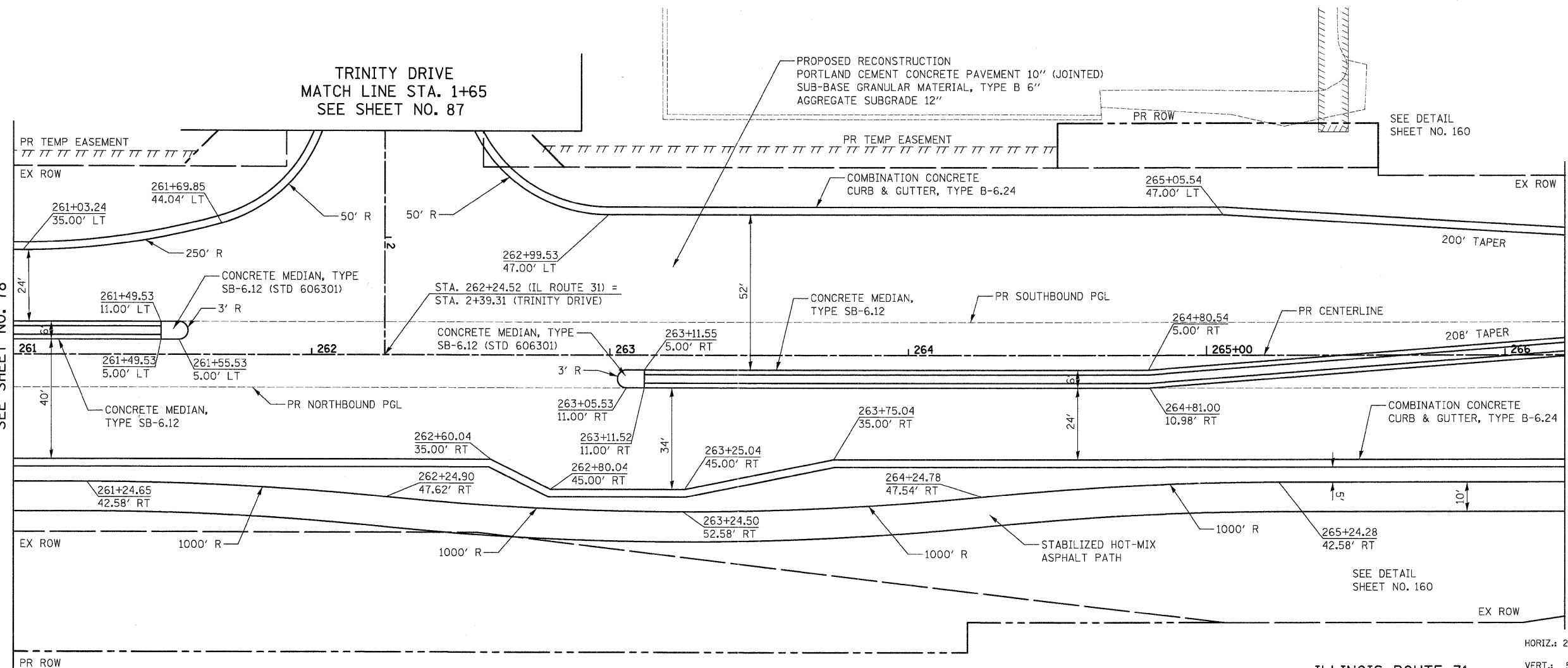


TRINITY DRIVE
MATCH LINE STA. 1+65
SEE SHEET NO. 87

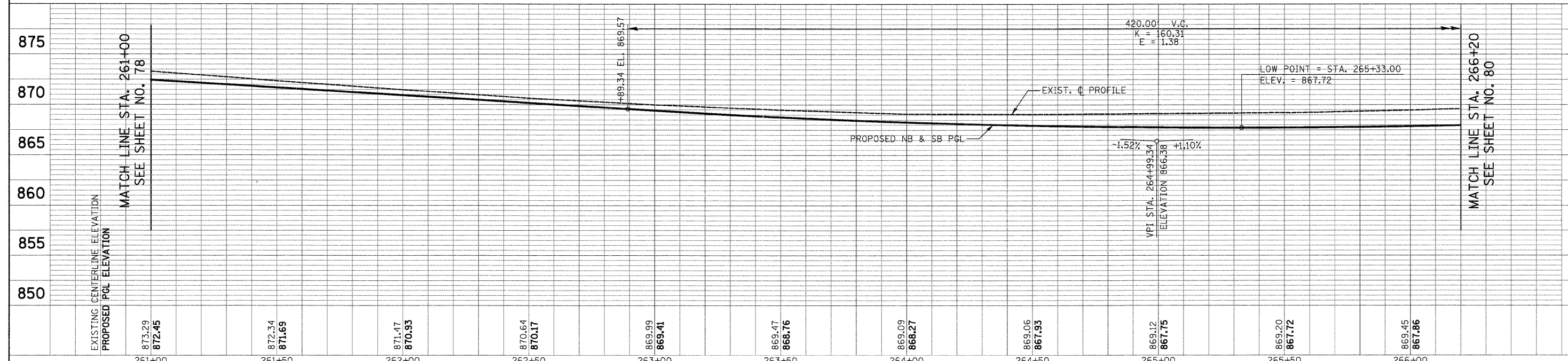
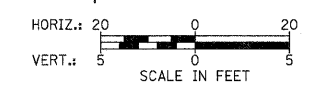
PROPOSED RECONSTRUCTION
PORTLAND CEMENT CONCRETE PAVEMENT 10" (JOINTED)
SUB-BASE GRANULAR MATERIAL, TYPE B 6"
AGGREGATE SUBGRADE 12"

MATCH LINE STA. 261+00
SEE SHEET NO. 78

MATCH LINE STA. 266+20
SEE SHEET NO. 80



ILLINOIS ROUTE 31



PLAN	DATE
BY	
REVIEWED	
PLOTTED	
ALIGNED	
CHECKED	
DATE	
FILE NAME	

PROFILE	DATE
BY	
REVIEWED	
PLOTTED	
GRADES CHECKED	
STRUCTURE NOTATIONS CHECKED	
DATE	

FILE NAME =	USER NAME = dse	DESIGNED - KWH	REVISED -	STATE OF ILLINOIS DEPARTMENT OF TRANSPORTATION	PLAN AND PROFILE	F.A.J.J. RTE. 3887	SECTION 96-00209-01-PV	COUNTY McHENRY	TOTAL SHEETS 271	SHEET NO. 79		
Y:\2278 Virginia Klassen\cad\sheet\08-Plan and Profile\2278_P&P_11.dgn	PLOT SCALE = 20.0000' / 1"	DRAWN - DTE	REVISED -			SCALE: 1" = 20'	SHEET NO. 11 OF 19 SHEETS	STA. 261+00 TO STA. 266+20	FED. ROAD DIST. NO. 1 [ILLINOIS] FED. AID PROJECT HPP-406(1003)	CONTRACT NO. 63553		
	PLOT DATE = 10/24/2011	CHECKED - GAB	REVISED -									
		DATE - 10/24/11	REVISED -									