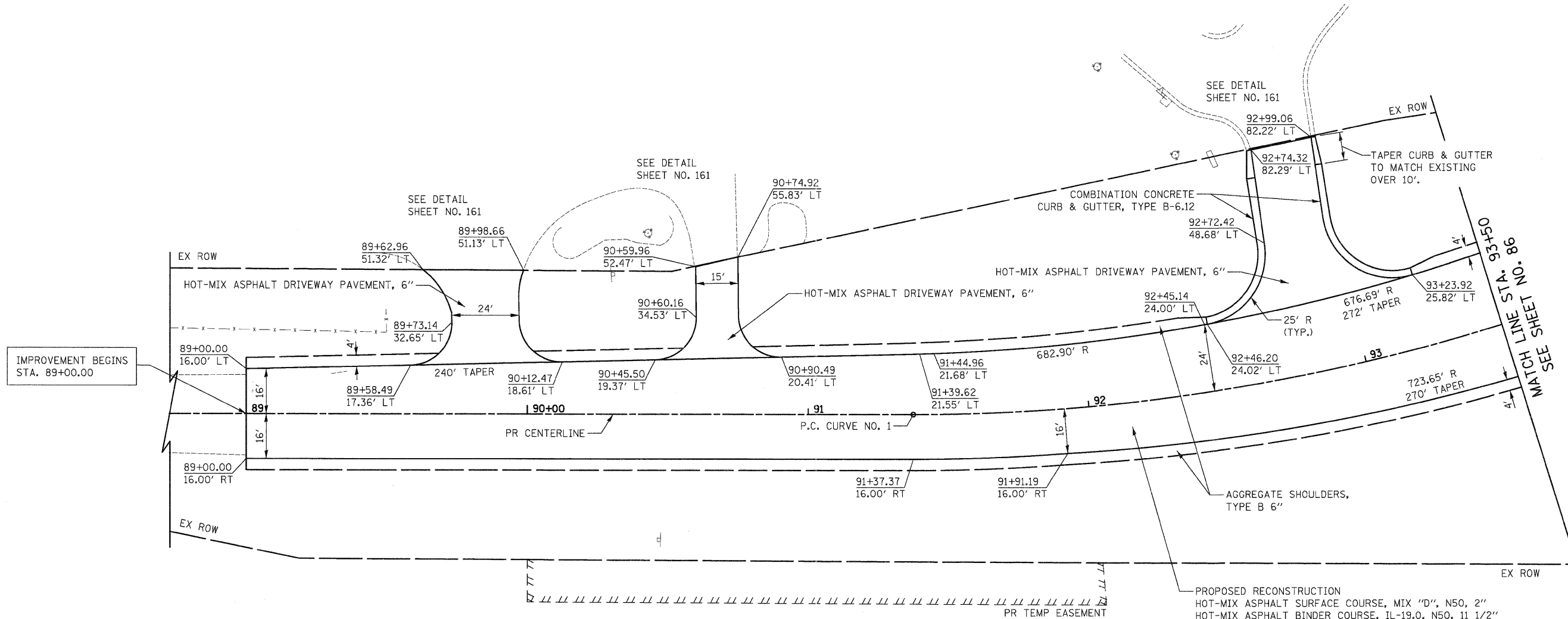
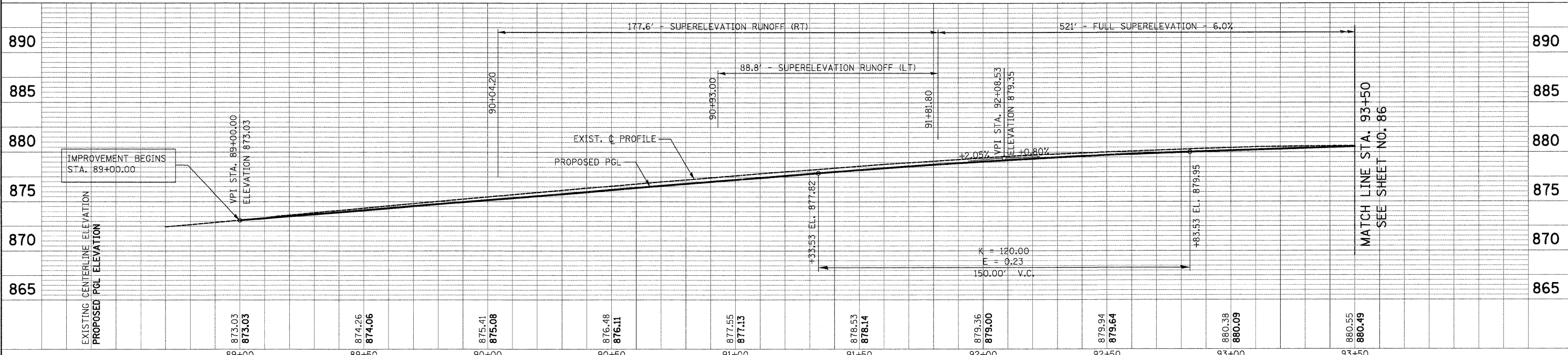
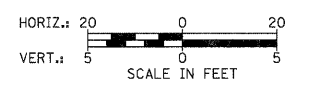


PLAN	DATE
BY	
REVISIONS	
NO.	
DATE	
BY	
REVISIONS	
NO.	
DATE	
BY	
REVISIONS	
NO.	
DATE	
BY	
REVISIONS	
NO.	
DATE	

PROFILE	DATE
BY	
REVISIONS	
NO.	
DATE	
BY	
REVISIONS	
NO.	
DATE	
BY	
REVISIONS	
NO.	
DATE	



NOTES:
1. ALL DRIVEWAY RADII SHALL BE 15' UNLESS OTHERWISE NOTED.



FILE NAME =	USER NAME = dte	DESIGNED - KWH	REVISED -	STATE OF ILLINOIS DEPARTMENT OF TRANSPORTATION	PLAN AND PROFILE	F.A.U. RTE. 3887	SECTION 96-00209-01-PV	COUNTY McHENRY	TOTAL SHEETS 271	SHEET NO. 85		
Y:\2278 Virginia Klaser\load\sheet\08-Plan	Profile\2278_P&P_17.dgn	DRAWN - DTE	REVISED -			SCALE: 1" = 20'	SHEET NO. 17 OF 19 SHEETS	STA. 89+00	TO STA. 93+50	FED. ROAD DIST. NO. 1	ILLINOIS	FED. AID PROJECT HPP-406410031
		CHECKED - GAB	REVISED -			CONTRACT NO. 63553						
		DATE - 10/24/11	REVISED -									