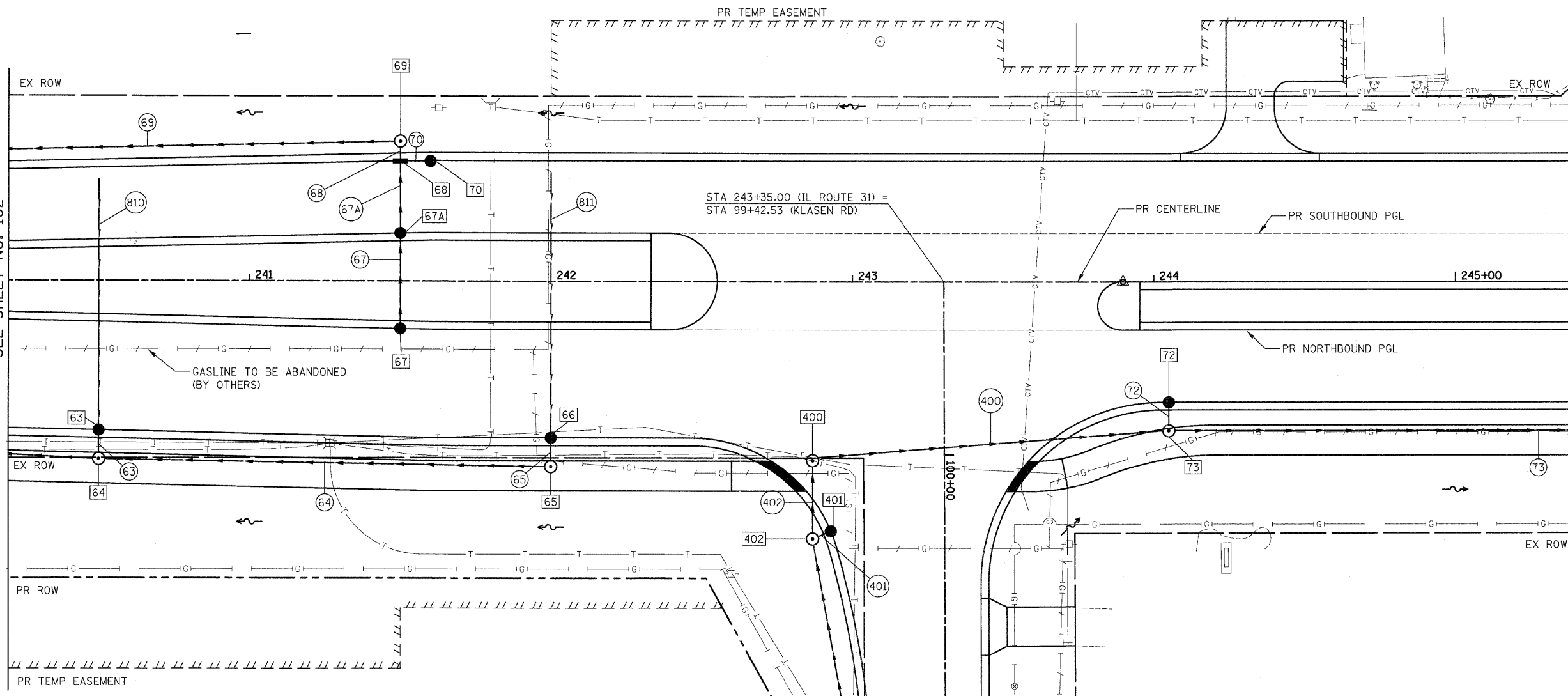


DATE	
BY	
REVIEWED	
PLANNED	
NOTE BOOK	
NO.	

DATE	
BY	
REVIEWED	
PLANNED	
NOTE BOOK	
NO.	

MATCH LINE STA. 240+20
SEE SHEET NO. 102

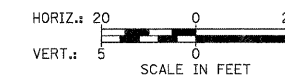


MATCH LINE STA. 245+40
SEE SHEET NO. 104

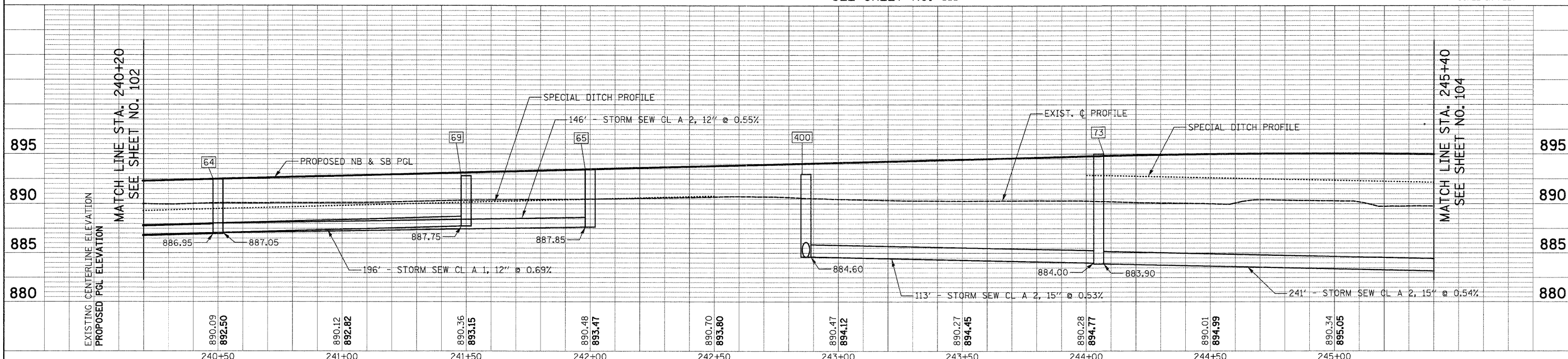
NOTES:
1. SEE SHEET NO. 118 & 119 FOR DRAINAGE CALLOFFS

KLASEN ROAD
MATCH LINE STA. 100+80
SEE SHEET NO. 111

ILLINOIS ROUTE 31



MATCH LINE STA. 240+20
SEE SHEET NO. 102



MATCH LINE STA. 245+40
SEE SHEET NO. 104

FILE NAME =	USER NAME = dte	DESIGNED - KWH	REVISED -	STATE OF ILLINOIS DEPARTMENT OF TRANSPORTATION	DRAINAGE AND UTILITY PLAN	F.A.U. RTE. 3887	SECTION 96-00209-01-PV	COUNTY McHENRY	TOTAL SHEETS 271	SHEET NO. 103	
Y:\2278 Virginia Klasen\load\sheet\11-DrainageAndUtilities\2278.D&U.07.dgn	PLOT SCALE = 20.0000' / in.	DRAWN - DTE	REVISED -			SCALE: 1" = 20'	SHEET NO. 7 OF 23 SHEETS	STA. 240+20	TO STA. 245+40	FED. ROAD DIST. NO. 1 ILLINOIS	FED. AID PROJECT HPP-40640031
	PLOT DATE = 10/24/2011	CHECKED - GAB	REVISED -			CONTRACT NO. 63553					
		DATE - 10/24/11	REVISED -								