

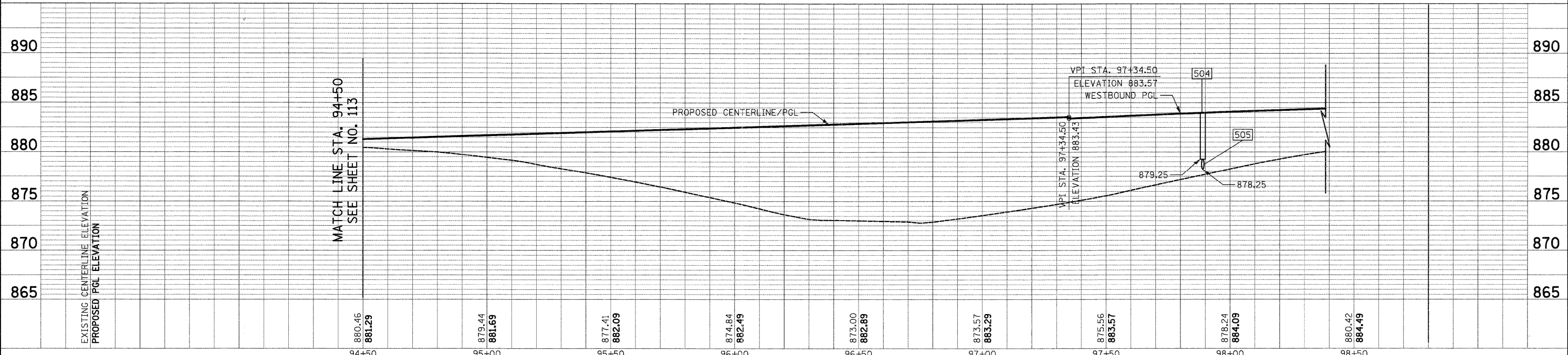
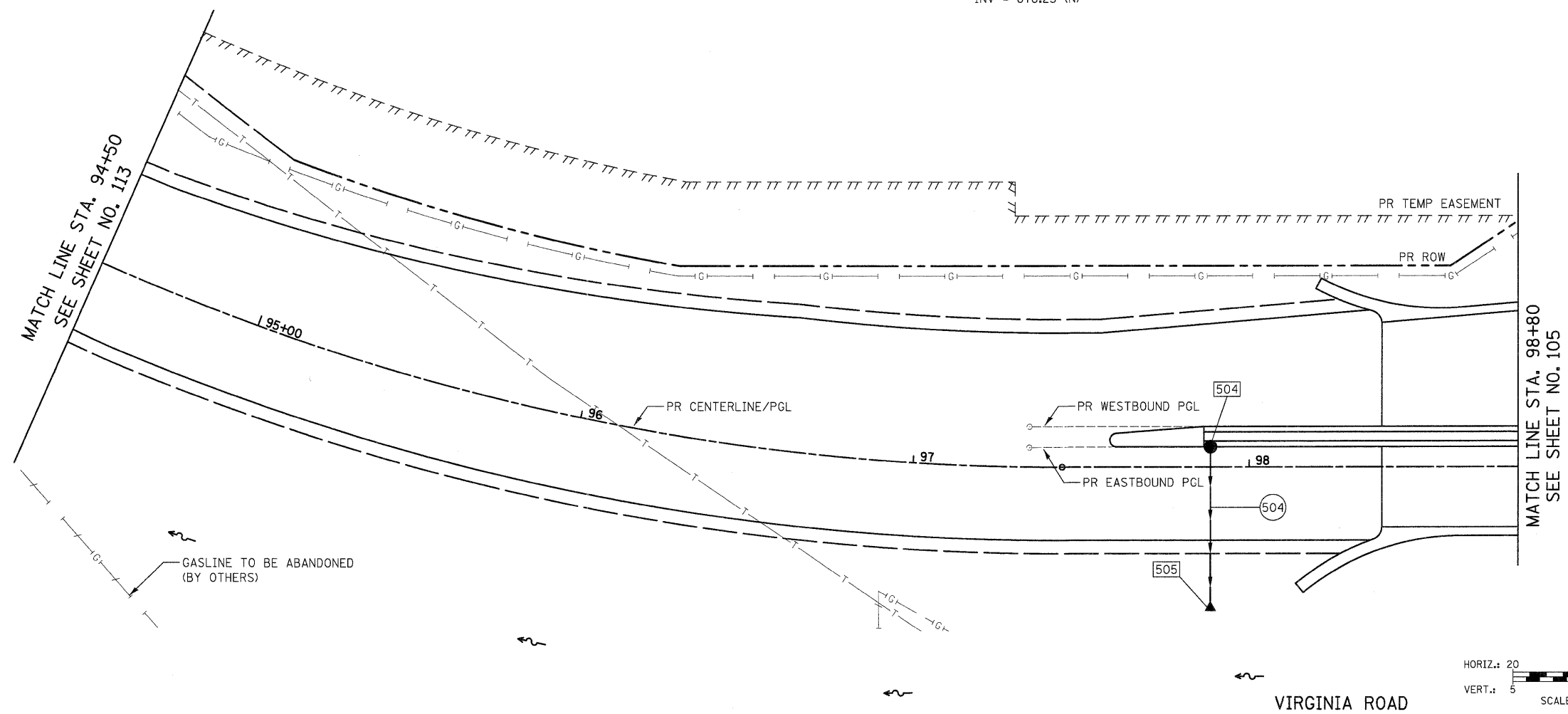
PLAN	SURVEYED	BY	DATE
	PLOTTED		
	ALIGNED		
	CHECKED		
	DATE		
	FILE NAME		
	NO.		

PROFILE	SURVEYED	BY	DATE
	PLOTTED		
	GRADES CHECKED		
	STRUCTURE NOTATIONS		
	NO.		

504 STA. 97+89, 7.0' LT
 CB TC T11F&G
 RIM = 883.95
 INV = 879.25 (S)

505 STA. 97+89, 46.1' RT
 PRC FLAR END SEC 12
 INV = 878.25 (N)

504 32' - STORM SEW CL A 2, 12" @ 2.50%
 TBF = 9.6 CU YD



FILE NAME = Y:\2278 Virginia Klaser\load\sheet\11-DrainageAndUtilities\2278_D&U_18.dgn	USER NAME = dte	DESIGNED - KWH	REVISED -	STATE OF ILLINOIS DEPARTMENT OF TRANSPORTATION	DRAINAGE AND UTILITY PLAN	F.A.U. RTE. 3887	SECTION 96-00209-01-PV	COUNTY McHENRY	TOTAL SHEETS 271	SHEET NO. 114	
PLOT SCALE = 20.0000' / in.	CHECKED - GAB	REVISED -	SCALE: 1" = 20'			SHEET NO. 18 OF 23 SHEETS	STA. 94+50 TO STA. 98+80	CONTRACT NO. 63553			
PLOT DATE = 10/24/2011	DATE - 10/24/11	REVISED -	FED. ROAD DIST. NO. 1 (ILLINOIS) FED. AID PROJECT HPP-406(1003)								