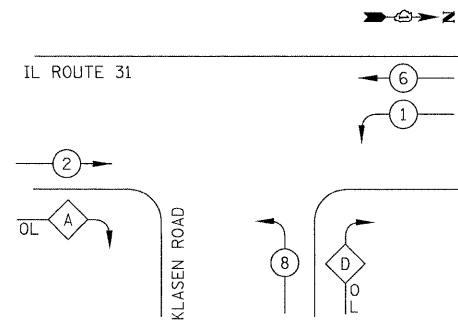
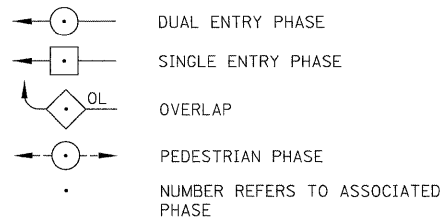


PROPOSED CONTROLLER SEQUENCE



LEGEND

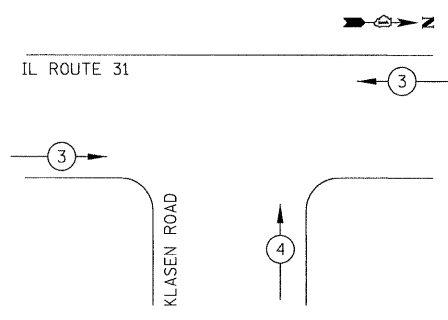


PHASE DESIGNATION DIAGRAM

RIGHT TURN OVERLAP PHASE DESIGNATION

OVERLAP LETTER	PERMISSIVE PHASE	PROTECTED PHASE
A	= 2	+ 8
D	= 8	+ 1

PROPOSED EMERGENCY VEHICLE PREEMPTION SEQUENCE



EMERGENCY VEHICLE PREEMPTORS		
EMERGENCY VEHICLE PREEMPTOR	3	4
MOVEMENT	←	↑

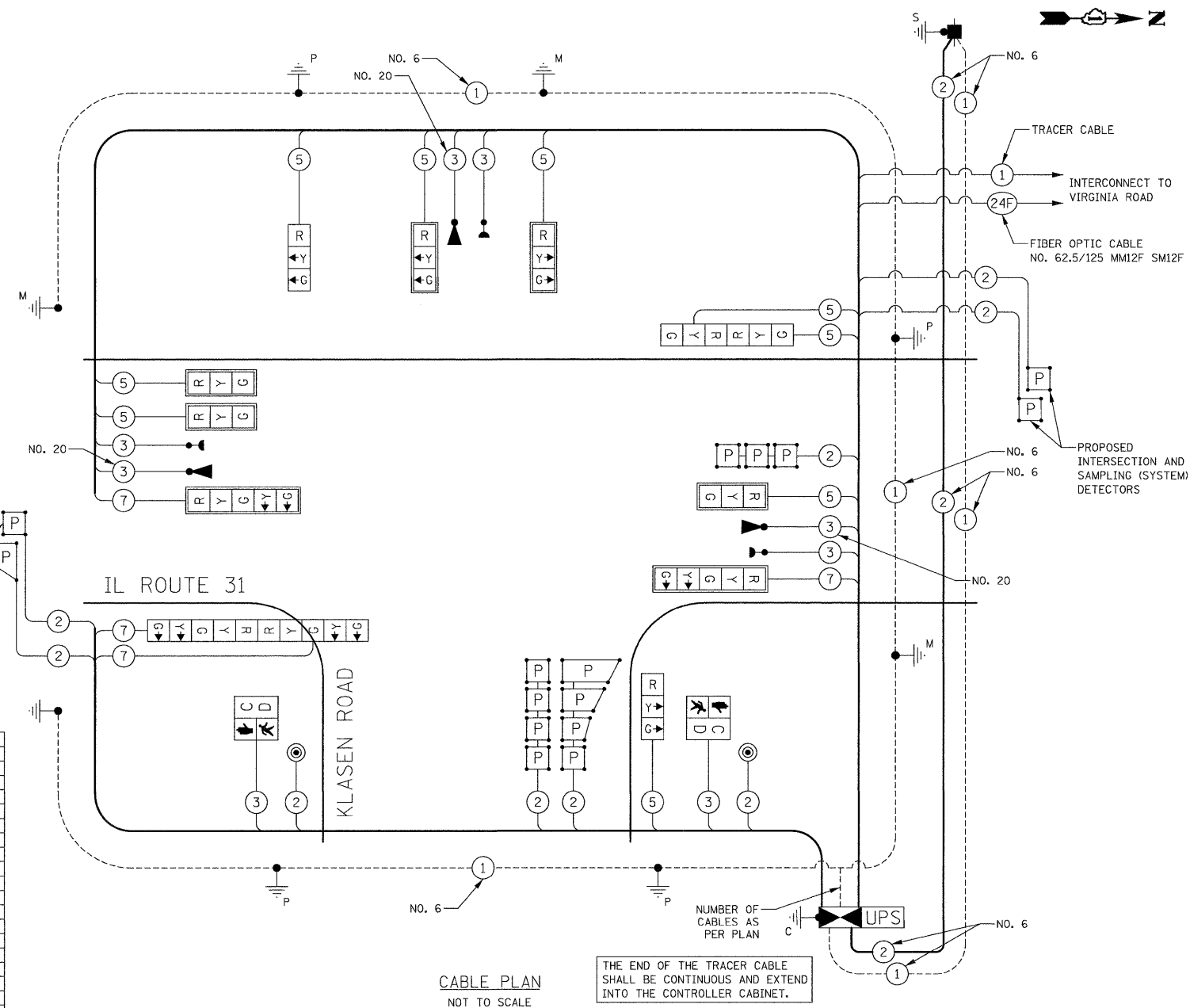
SCHEDULE OF QUANTITIES

PAY ITEM	UNIT	QNTY.
CHANGEABLE MESSAGE SIGN	CAL MO	6
SIGN PANEL - TYPE 1	SO FT	21
SERVICE INSTALLATION-POLE MOUNTED	EACH	1
UNDERGROUND CONDUIT, GALVANIZED STEEL, 2" DIA.	FOOT	848
UNDERGROUND CONDUIT, GALVANIZED STEEL, 2 1/2" DIA.	FOOT	153
UNDERGROUND CONDUIT, GALVANIZED STEEL, 3" DIA.	FOOT	126
UNDERGROUND CONDUIT, GALVANIZED STEEL, 4" DIA.	FOOT	400
HANDHOLE	EACH	3
HEAVY-DUTY HANDHOLE	EACH	2
DOUBLE HANDHOLE	EACH	2
FULL-ACTUATED CONTROLLER AND TYPE IV CABINET, SPECIAL	EACH	1
UNINTERRUPTIBLE POWER SUPPLY, SPECIAL	EACH	1
TRANSCEIVER-FIBER OPTIC	EACH	1
ELECTRIC CABLE IN CONDUIT, SIGNAL NO. 14 2C	FOOT	220
ELECTRIC CABLE IN CONDUIT, SIGNAL NO. 14 3C	FOOT	880
ELECTRIC CABLE IN CONDUIT, SIGNAL NO. 14 6C	FOOT	1890
ELECTRIC CABLE IN CONDUIT, SIGNAL NO. 14 7C	FOOT	804
ELECTRIC CABLE IN CONDUIT, LEAD-IN, NO. 14 1 PAIR	FOOT	1991
ELECTRIC CABLE IN CONDUIT, SERVICE NO. 6 2C	FOOT	162
ELECTRIC CABLE IN CONDUIT, EQUIPMENT GROUNDING CONDUCTOR, NO. 6 1C	FOOT	974
TRAFFIC SIGNAL POST, GALVANIZED STEEL 10 FT.	EACH	1
TRAFFIC SIGNAL POST, GALVANIZED STEEL 14 FT.	EACH	3
TRAFFIC SIGNAL POST, GALVANIZED STEEL 16 FT.	EACH	1
STEEL MAST ARM ASSEMBLY AND POLE, 32 FT.	EACH	1
STEEL MAST ARM ASSEMBLY AND POLE, 36 FT.	EACH	1
STEEL MAST ARM ASSEMBLY AND POLE, 42 FT.	EACH	1
CONCRETE FOUNDATION, TYPE A	FOOT	20
CONCRETE FOUNDATION, TYPE C	FOOT	4
CONCRETE FOUNDATION, TYPE E 30-INCH DIAMETER	FOOT	30
CONCRETE FOUNDATION, TYPE E 36-INCH DIAMETER	FOOT	15
SIGNAL HEAD, LED, 1-FACE, 3-SECTION, MAST-ARM MOUNTED	EACH	5
SIGNAL HEAD, LED, 1-FACE, 3-SECTION, BRACKET MOUNTED	EACH	2
SIGNAL HEAD, LED, 1-FACE, 5-SECTION, MAST-ARM MOUNTED	EACH	2
SIGNAL HEAD, LED, 2-FACE, 3-SECTION, BRACKET MOUNTED	EACH	1
SIGNAL HEAD, LED, 2-FACE, 5-SECTION, BRACKET MOUNTED	EACH	1
PEDESTRIAN SIGNAL HEAD, LED, 1-FACE, BRACKET MOUNTED WITH COUNTDOWN TIMER	EACH	2
TRAFFIC SIGNAL BACKPLATE, LOUVERED, ALUMINUM	EACH	7
INDUCTIVE LOOP DETECTOR	EACH	7
PERFORMED DETECTOR LOOP	FOOT	554
* LIGHT DETECTOR	EACH	3
* LIGHT DETECTOR AMPLIFIER	EACH	1
PEDESTRIAN PUSH-BUTTON	EACH	2
TEMPORARY TRAFFIC SIGNAL INSTALLATION	EACH	1
REMOVE EXISTING TRAFFIC SIGNAL EQUIPMENT	EACH	1
REMOVE EXISTING HANDHOLE	EACH	7
REMOVE EXISTING CONCRETE FOUNDATION	EACH	6
* EMERGENCY VEHICLE PRIORITY SYSTEM LINE SENSOR CABLE, NO. 20 3/C	FOOT	647
TEMPORARY TRAFFIC SIGNAL TIMING	EACH	1

I.D.O.T. TRAFFIC SIGNAL INSTALLATION ELECTRICAL SERVICE REQUIREMENTS				TOTAL WATTAGE
TYPE	NO. LAMPS	WATTAGE INCAND. LED	OPERATION	
SIGNAL (RED)	13	17	0.50	111
(YELLOW)	13	25	0.25	81
(GREEN)	13	15	0.25	49
ARROW	8	12	0.10	10
PED. SIGNAL	2	25	1.00	50
CONTROLLER	1	100	1.00	100
FLASHER			0.50	
TOTAL =				401

ENERGY COSTS TO: ILLINOIS DEPARTMENT OF TRANSPORTATION
201 WEST CENTER COURT
SCHAUMBURG, IL 60196-1096
CONTACT: RIGO ESPINOZA
PHONE: (847) 608-2371
COMPANY: COM ED

PROPOSED INTERSECTION AND SAMPLING (SYSTEM) DETECTORS



CABLE PLAN
NOT TO SCALE

NUMBER OF CABLES AS PER PLAN

THE END OF THE TRACER CABLE SHALL BE CONTINUOUS AND EXTEND INTO THE CONTROLLER CABINET.

NOTE:
THE TRAFFIC SIGNAL CONTROLLER EQUIPMENT FOR THIS PROJECT SHALL BE "ECONOLITE" TO MATCH THE EXISTING ADJACENT SYSTEM.