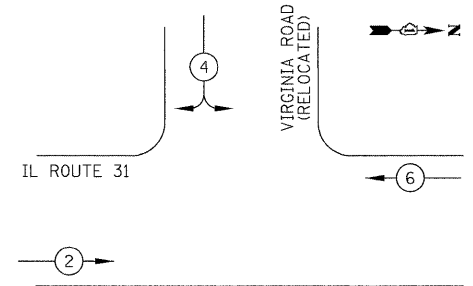
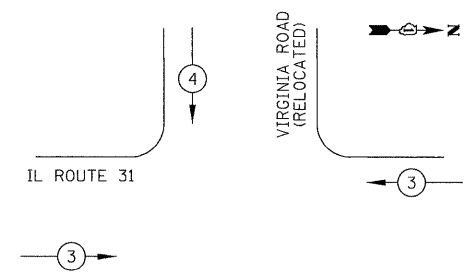




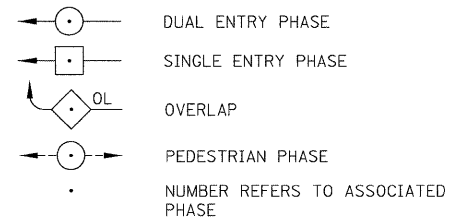
TEMPORARY CONTROLLER SEQUENCE  
M.O.T. STAGE IIA-III



TEMPORARY EMERGENCY VEHICLE  
PREEMPTION SEQUENCE  
M.O.T. STAGE IIA-III

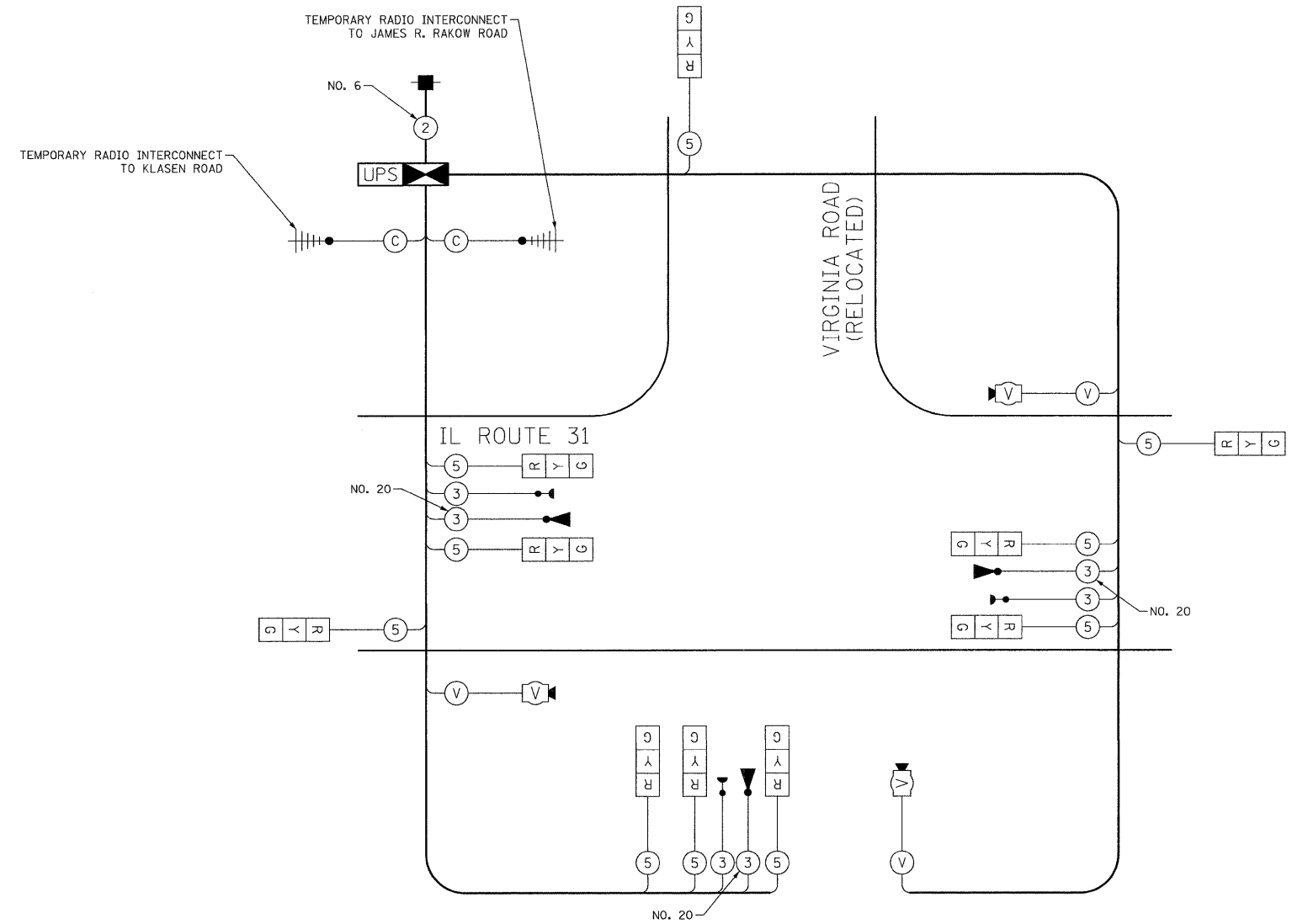


LEGEND



TEMPORARY EMERGENCY VEHICLE PREEMPTORS		
EMERGENCY VEHICLE PREEMPTOR	3	4
MOVEMENT	←→	↓

TEMPORARY PHASE DESIGNATION DIAGRAM



TEMPORARY CABLE PLAN  
NOT TO SCALE

TEMPORARY CABLE PLAN NOTES

1. THE TEMPORARY TRAFFIC SIGNAL AT THE INTERSECTION OF IL ROUTE 31 AND THE RELOCATED VIRGINIA ROAD ALIGNMENT SHALL BE ACTIVATED AT THE BEGINNING OF M.O.T. STAGE IIA. THE INSTALLATION AND TURN-ON OF THE TEMPORARY SIGNAL SHALL BE COORDINATED WITH THE DEACTIVATION AND REMOVAL OF THE TEMPORARY SIGNAL AT IL ROUTE 31 AND EXISTING VIRGINIA ROAD. THE TWO TEMPORARY SIGNALS SHALL NOT BE IN OPERATION SIMULTANEOUSLY.

I.D.O.T. TRAFFIC SIGNAL INSTALLATION ELECTRICAL SERVICE REQUIREMENTS					TOTAL WATTAGE
TYPE	NO. LAMPS	WATTAGE INCAND.	LED	OPERATION	
SIGNAL (RED)	10	17		0.50	85
(YELLOW)	10	25		0.25	63
(GREEN)	10	15		0.25	38
ARROW	-	12		0.10	-
PED. SIGNAL	-	25		1.00	-
CONTROLLER	1	100		1.00	100
VIDEO SYSTEM	1	150		1.00	150
FLASHER				0.50	
TOTAL =					436

ENERGY COSTS TO: ILLINOIS DEPARTMENT OF TRANSPORTATION  
201 WEST CENTER COURT  
SCHAUMBURG, IL 60196-1096  
ENERGY SUPPLY: CONTACT: RIGO ESPINOZA  
PHONE: (847) 608-2371  
COMPANY: COM ED

NOTE:  
THE TRAFFIC SIGNAL CONTROLLER EQUIPMENT  
FOR THIS PROJECT SHALL BE "ECONOLITE"  
TO MATCH THE EXISTING ADJACENT SYSTEM.