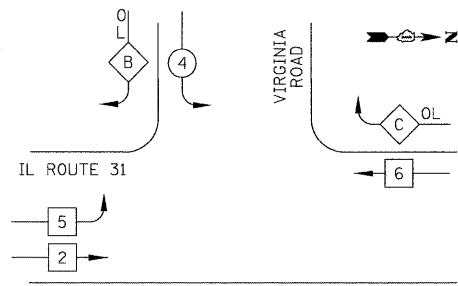
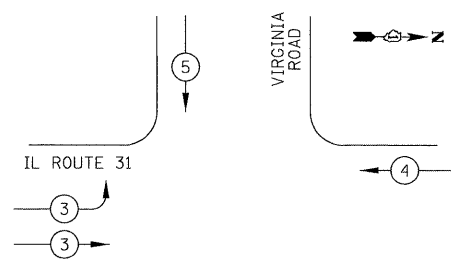


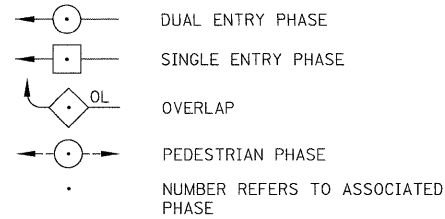
PROPOSED CONTROLLER SEQUENCE



PROPOSED EMERGENCY VEHICLE PREEMPTION SEQUENCE



LEGEND



PHASE DESIGNATION DIAGRAM

RIGHT TURN OVERLAP PHASE DESIGNATION

OVERLAP LETTER	PERMISSIVE PHASE	PROTECTED PHASE
B	= 4	+ 5
C	= 6	+ 4

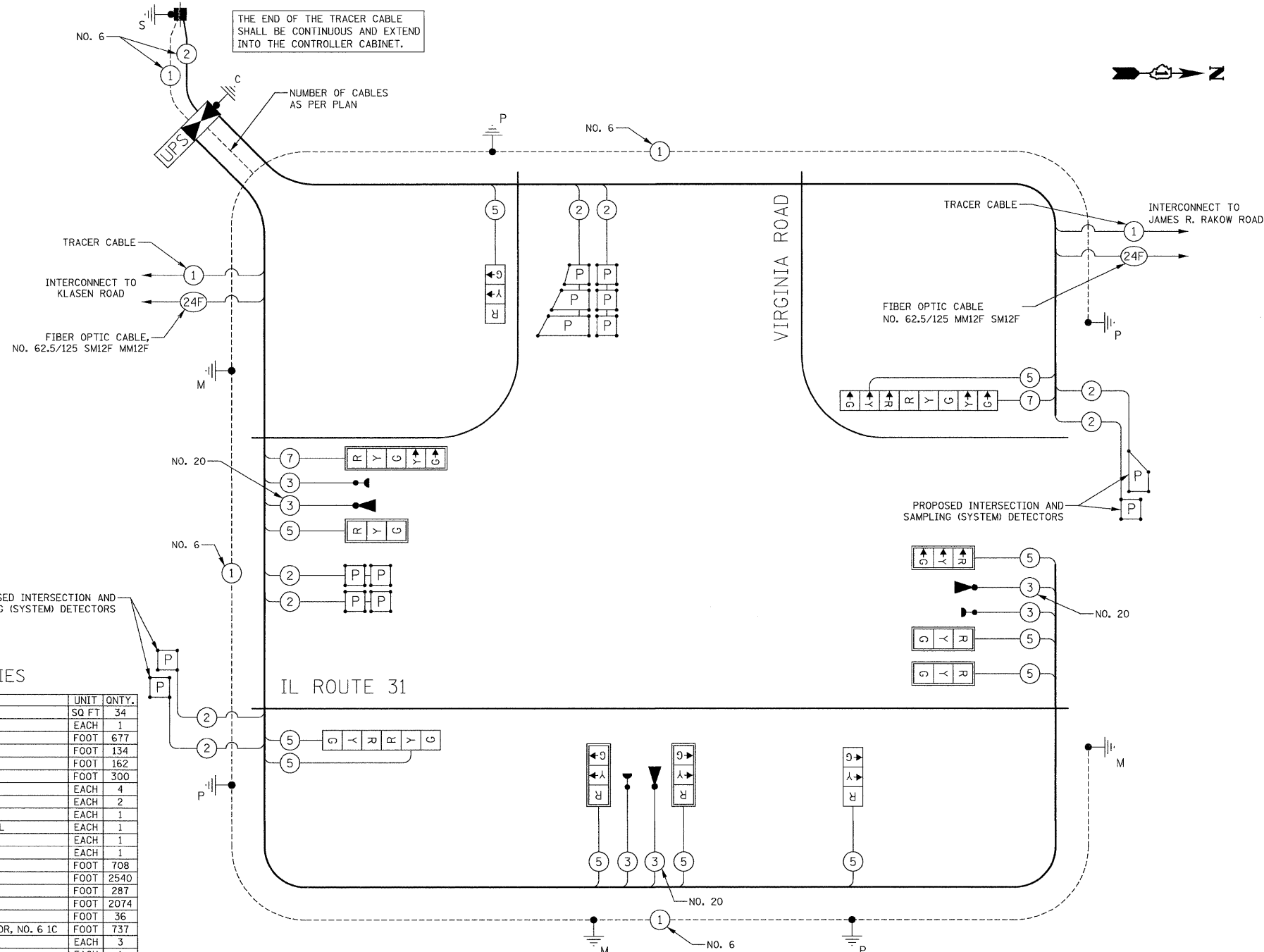
PROPOSED EMERGENCY VEHICLE PREEMPTORS			
EMERGENCY VEHICLE PREEMPTOR	3	4	5
MOVEMENT	→	←	↓

SCHEDULE OF QUANTITIES

PAY ITEM	UNIT	QNTY.
SIGN PANEL - TYPE 1	SQ FT	34
SERVICE INSTALLATION-POLE MOUNTED	EACH	1
UNDERGROUND CONDUIT, GALVANIZED STEEL, 2" DIA.	FOOT	677
UNDERGROUND CONDUIT, GALVANIZED STEEL, 2 1/2" DIA.	FOOT	134
UNDERGROUND CONDUIT, GALVANIZED STEEL, 3" DIA.	FOOT	162
UNDERGROUND CONDUIT, GALVANIZED STEEL, 4" DIA.	FOOT	300
HANDHOLE	EACH	4
HEAVY-DUTY HANDHOLE	EACH	2
DOUBLE HANDHOLE	EACH	1
FULL-ACTUATED CONTROLLER AND TYPE IV CABINET, SPECIAL	EACH	1
UNINTERRUPTIBLE POWER SUPPLY, SPECIAL	EACH	1
TRANSCEIVER-FIBER OPTIC	EACH	1
ELECTRIC CABLE IN CONDUIT, SIGNAL NO. 14 3C	FOOT	708
ELECTRIC CABLE IN CONDUIT, SIGNAL NO. 14 5C	FOOT	2540
ELECTRIC CABLE IN CONDUIT, SIGNAL NO. 14 7C	FOOT	287
ELECTRIC CABLE IN CONDUIT, LEAD-IN, NO. 14 1 PAIR	FOOT	2074
ELECTRIC CABLE IN CONDUIT, SERVICE NO. 6 2C	FOOT	36
ELECTRIC CABLE IN CONDUIT, EQUIPMENT GROUNDING CONDUCTOR, NO. 6 1C	FOOT	737
TRAFFIC SIGNAL POST, GALVANIZED STEEL 14 FT.	EACH	3
TRAFFIC SIGNAL POST, GALVANIZED STEEL 16 FT.	EACH	1
STEEL MAST ARM ASSEMBLY AND POLE, 34 FT.	EACH	1
STEEL MAST ARM ASSEMBLY AND POLE, 36 FT.	EACH	1
STEEL MAST ARM ASSEMBLY AND POLE, 50 FT.	EACH	1
CONCRETE FOUNDATION, TYPE A	FOOT	16
CONCRETE FOUNDATION, TYPE C	FOOT	4
CONCRETE FOUNDATION, TYPE E 30-INCH DIAMETER	FOOT	30
CONCRETE FOUNDATION, TYPE E 36-INCH DIAMETER	FOOT	15
SIGNAL HEAD, LED, 1-FACE, 3-SECTION, MAST-ARM MOUNTED	EACH	6
SIGNAL HEAD, LED, 1-FACE, 3-SECTION, BRACKET MOUNTED	EACH	2
SIGNAL HEAD, LED, 1-FACE, 5-SECTION, MAST-ARM MOUNTED	EACH	1
SIGNAL HEAD, LED, 2-FACE, 3-SECTION, BRACKET MOUNTED	EACH	1
SIGNAL HEAD, LED, 2-FACE, 1-3 SECTION, 1-5 SECTION, BRACKET MOUNTED	EACH	1
TRAFFIC SIGNAL BACKPLATE, LOUVERED, ALUMINUM	EACH	7
INDUCTIVE LOOP DETECTOR	EACH	8
PREFORMED DETECTOR LOOP	FOOT	503
* LIGHT DETECTOR	EACH	3
* LIGHT DETECTOR AMPLIFIER	EACH	1
TEMPORARY TRAFFIC SIGNAL INSTALLATION	EACH	2
REMOVE EXISTING TRAFFIC SIGNAL EQUIPMENT	EACH	1
REMOVE EXISTING HANDHOLE	EACH	7
REMOVE EXISTING CONCRETE FOUNDATION	EACH	6
* EMERGENCY VEHICLE PRIORITY SYSTEM LINE SENSOR CABLE, NO. 20 3/C	FOOT	708
TEMPORARY TRAFFIC SIGNAL TIMING	EACH	2

I.D.O.T. TRAFFIC SIGNAL INSTALLATION ELECTRICAL SERVICE REQUIREMENTS				TOTAL WATTAGE
TYPE	NO. LAMPS	WATTAGE INCAND. LED	% OPERATION	
SIGNAL (RED)	13	17	0.50	111
(YELLOW)	13	25	0.25	81
(GREEN)	13	15	0.25	49
ARROW	4	12	0.10	5
PED. SIGNAL	-	25	1.00	-
CONTROLLER	1	100	1.00	100
FLASHER			0.50	
TOTAL =				346

ENERGY COSTS TO: ILLINOIS DEPARTMENT OF TRANSPORTATION  
201 WEST CENTER COURT  
SCHAUMBURG, IL 60196-1096  
CONTACT: RIGO ESPINOZA  
PHONE: (847) 608-2371  
COMPANY: COM ED



CABLE PLAN  
NOT TO SCALE

NOTE:  
THE TRAFFIC SIGNAL CONTROLLER EQUIPMENT FOR THIS PROJECT SHALL BE "ECONOLITE" TO MATCH THE EXISTING ADJACENT SYSTEM.

FILE NAME = Y:\2278 Virginia Klaseen\cad\sheet\15-TrafficSignals\2278-TS-14-Va-Cable.dgn	USER NAME = brd	DESIGNED - BRD	REVISED -
PLOT SCALE = 50,0000 1/ in.	PLOT DATE = 12/7/2011	DRAWN - OJT	REVISED -
		CHECKED - JUE	REVISED -
		DATE - 10/24/11	REVISED -

STATE OF ILLINOIS  
DEPARTMENT OF TRANSPORTATION

CABLE PLAN, EMERGENCY VEHICLE PREEMPTION SEQUENCE OF OPERATION, PHASE DESIGNATION DIAGRAM & SCHEDULE OF QUANTITIES  
IL ROUTE 31 AT VIRGINIA ROAD

SCALE: NO SCALE SHEET NO. 1 OF 1 SHEETS STA. TO STA.

F.A.U. RTE. 3887	SECTION 96-00209-01-PV	COUNTY MCHENRY	TOTAL SHEETS 271	SHEET NO. 145
CONTRACT NO. 63553			FED. ROAD DIST. NO. 1 ILLINOIS FED. AID PROJECT HPP-4064003	