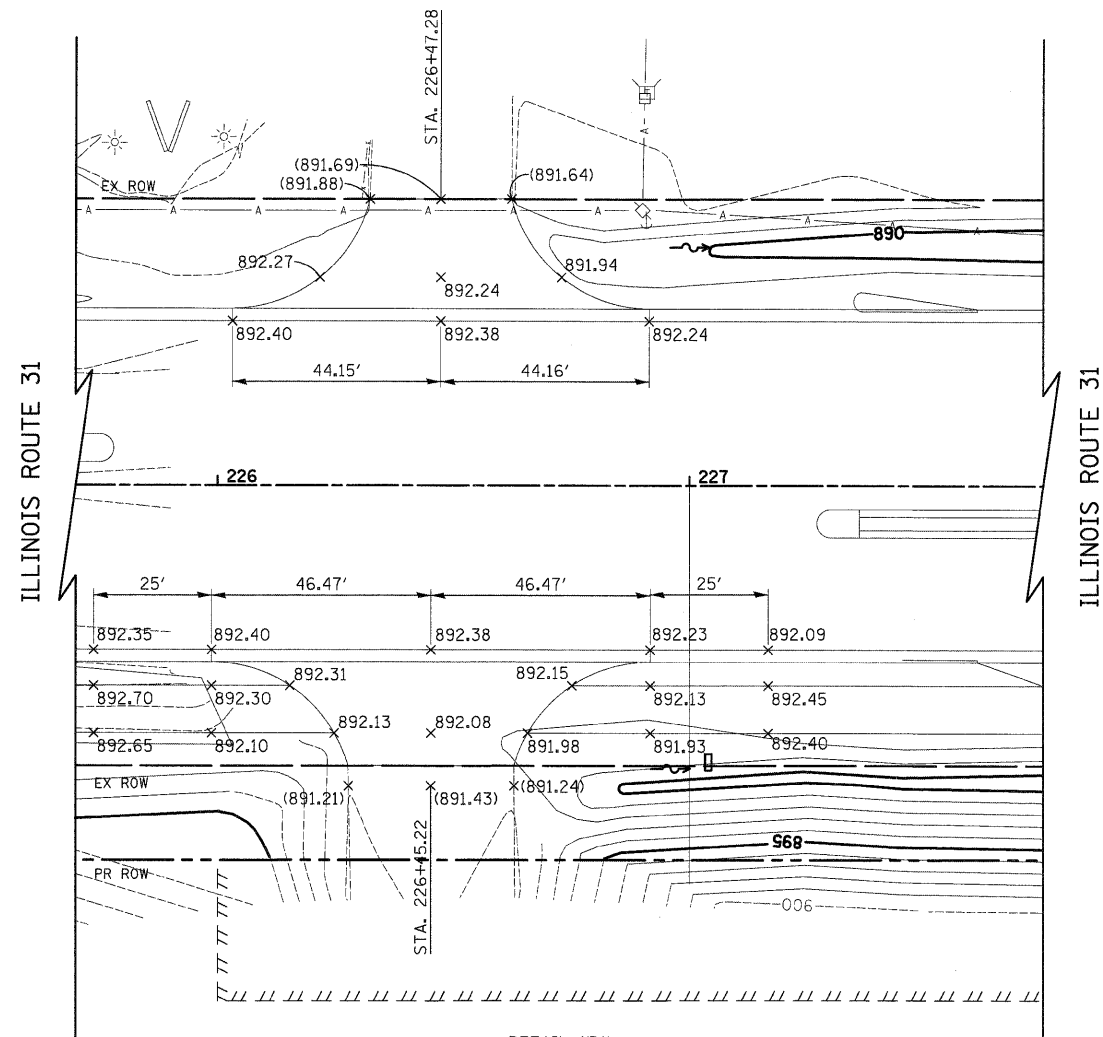
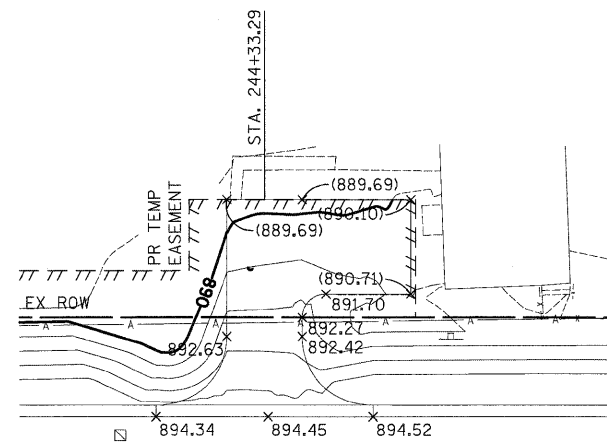


PLAN	SURVEYED	DATE
	PLOTTED	BY
	GRADES CHECKED	
	STRUCTURE NOTATIONS CHECKED	
	NOTE BOOK	
	NO.	

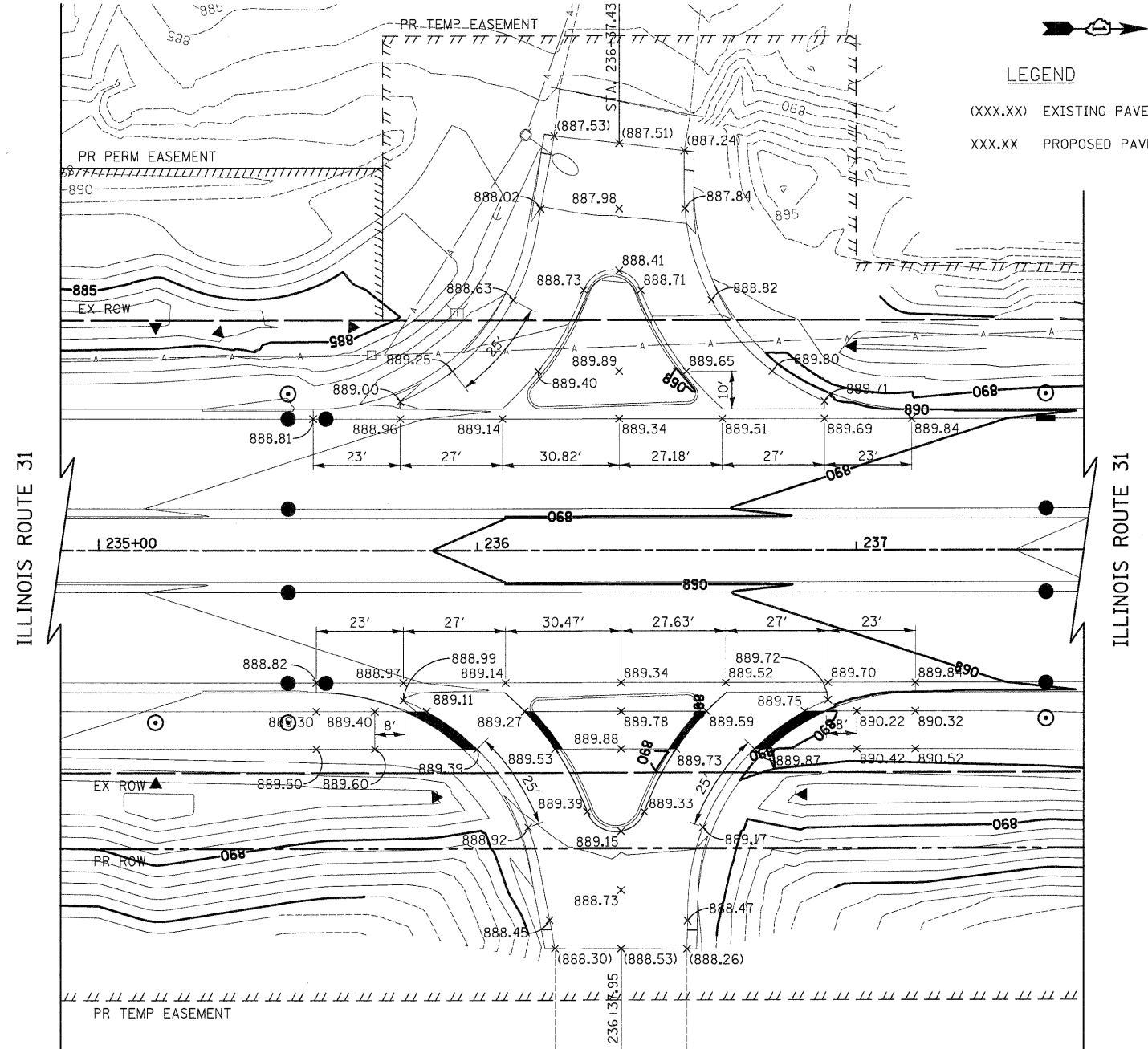
PROFILE	SURVEYED	DATE
	PLOTTED	BY
	GRADES CHECKED	
	STRUCTURE NOTATIONS CHECKED	
	NOTE BOOK	
	NO.	



DETAIL "B"
COMMERCIAL ENTRANCE
STA. 226+45.22, RT
STA. 226+47.28, LT

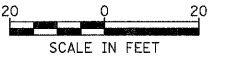


DETAIL "D"
COMMERCIAL ENTRANCE
STA. 244+33.29, LT



DETAIL "C"
COMMERCIAL ENTRANCE
STA. 236+37.43, LT
STA. 236+37.95, RT

LEGEND
(XXX.XX) EXISTING PAVEMENT ELEVATION
XXX.XX PROPOSED PAVEMENT ELEVATION



FILE NAME = Y:\2278-Virginia Klassen\load\sheet\16-Detail	USER NAME = dte	DESIGNED - KWH	REVISED -	STATE OF ILLINOIS DEPARTMENT OF TRANSPORTATION	GRADING DETAILS			F.A.U. RTE. 3887	SECTION 96-00209-01-PV	COUNTY MCHENRY	TOTAL SHEETS 271	SHEET NO. 159
		DRAWN - KWH	REVISED -		SCALE: 1" = 20'	SHEET NO. 2 OF 6 SHEETS	STA. TO STA.	CONTRACT NO. 63553				
		CHECKED - CAB	REVISED -		FED. ROAD DIST. NO. 1 ILLINOIS FED. AID PROJECT HPP-4064(003)							
		DATE - 10/24/11	REVISED -									