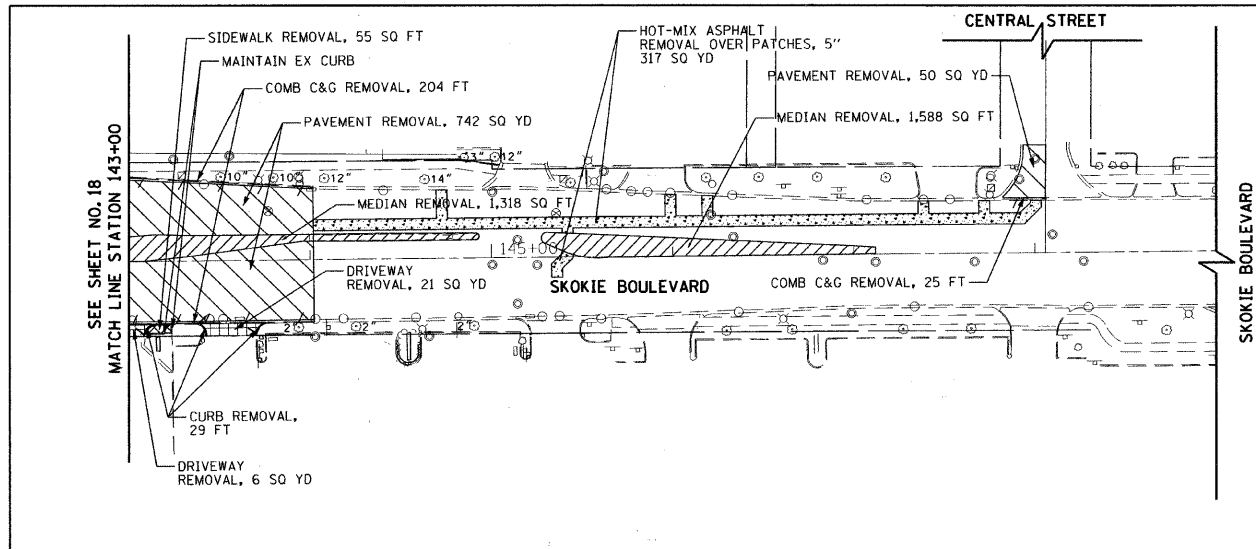


|                |  |
|----------------|--|
| DATE           |  |
| BY             |  |
| SURVEYED       |  |
| PLOTTED        |  |
| CHECKED        |  |
| NOTE BOOK      |  |
| NO.            |  |
| PAID FILE NAME |  |

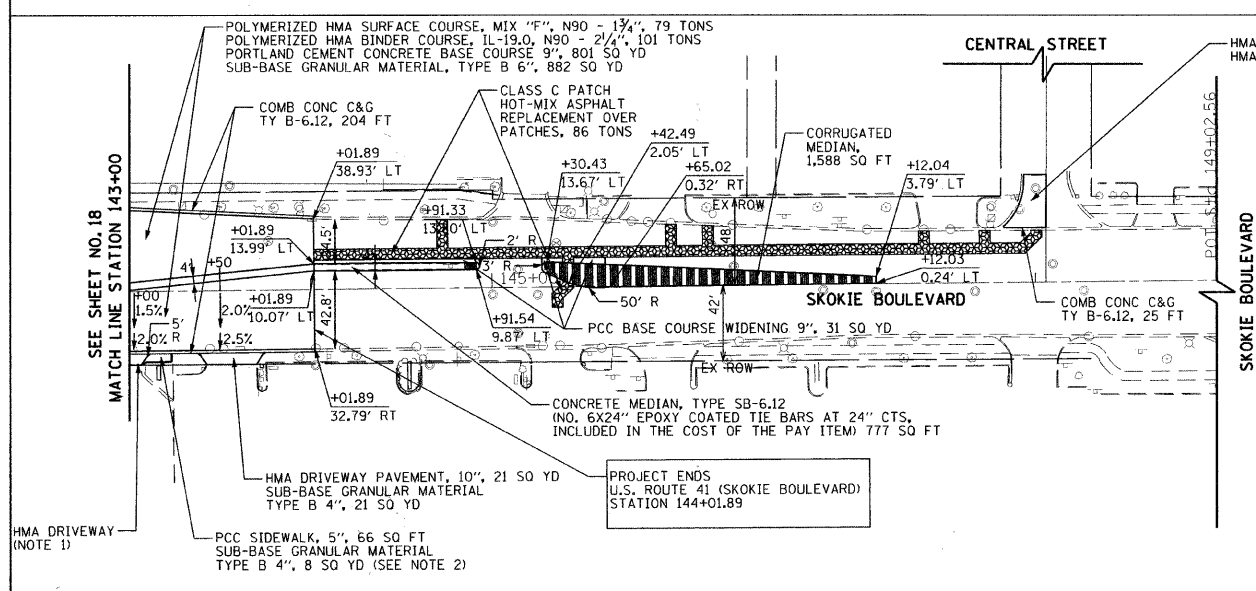
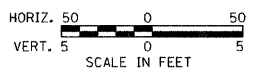
|                     |  |
|---------------------|--|
| DATE                |  |
| BY                  |  |
| SURVEYED            |  |
| PLOTTED             |  |
| CHECKED             |  |
| NOTE BOOK           |  |
| NO.                 |  |
| STRUCTURE NOTATIONS |  |

1475 EAST WOODFIELD ROAD, SUITE 600  
SCHALMURG, ILLINOIS 60173  
(847) 605-9600



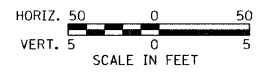
LEGEND

|  |  |  |   |  |  |
|--|--|--|---|--|--|
|  | PAVEMENT REMOVAL   |  | HOT-MIX ASPHALT SURFACE REMOVAL, 2 1/2" |  | HOT-MIX ASPHALT SURFACE REMOVAL, VARIABLE DEPTH (SEE TABLES ON SHEET NO. 54) |
|  | MEDIAN REMOVAL   |  | 6" TREE REMOVAL                         |  | RELOCATE UTILITY POLE (BY OTHERS)  |
|  | SIDEWALK REMOVAL   |  | COMBINATION CURB AND GUTTER REMOVAL     |  |  |
|  | DRIVEWAY PAVEMENT REMOVAL  |  |   |  |  |
|  | HMA SURFACE REMOVAL, VARIABLE DEPTH OVER PATCHES (TO TOP OF EXIST PCC BASE COURSE) |  |   |  |  |

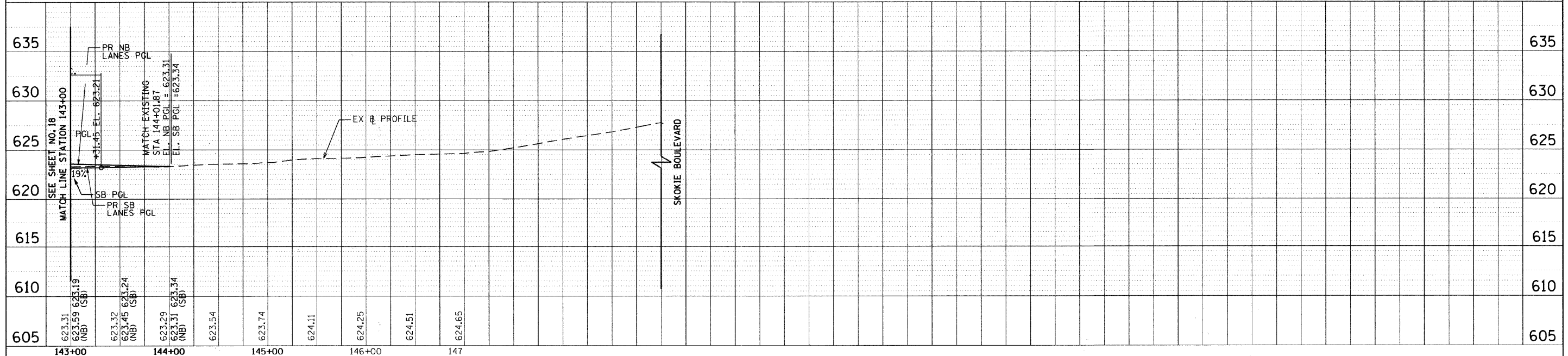


LEGEND

|  |               |
|--|---------------|
|  | CLASS C PATCH |
|--|---------------|



- NOTES:
1. REPLACE EXISTING HMA DRIVEWAY BEHIND PROPOSED PCC SIDEWALK WITH 2" HMA SURFACE COURSE, MIX "D" N50 OVER 8" HMA BASE COURSE (PAID FOR AS HMA DRIVEWAY PAVEMENT, 10")
  2. REFER TO SHEET 18A FOR SIDEWALK/ DRIVEWAY DETAIL.



|  |                       |                   |           |   |  |   |                         |                            |                    |              |  |  |
|--|-----------------------|-------------------|-----------|---|--|---|-------------------------|----------------------------|--------------------|--------------|--|--|
| FILE NAME - g:\ch08\0845\road\sheets\0845-PP-203.sht | USER NAME = CECoin    | DESIGNED - CEC    | REVISED - | <b>STATE OF ILLINOIS<br/>DEPARTMENT OF TRANSPORTATION</b> | <b>U.S. ROUTE 41 (SKOKIE BOULEVARD)<br/>PLAN AND PROFILE</b> | F.A.P. RTE. 350                                 | SECTION 00-00243-00-CH  | COUNTY COOK                | TOTAL SHEETS 142   | SHEET NO. 19 |  |  |
| PLOT SCALE = 50.000' / IN.                           | PLOT DATE = 11/4/2011 | DRAWN - CEC       | REVISED - |   |  | SCALE: 1"=50'                                   | SHEET NO. 3 OF 5 SHEETS | STA. 143+00 TO STA. 149+00 | CONTRACT NO. 63566 |              |  |  |
|  |                       | CHECKED - DWB     | REVISED - |   |  | FED. ROAD DIST. NO. 7 ILLINOIS FED. AID PROJECT |                         |                            |                    |              |  |  |
|  |                       | DATE - 11/07/2011 | REVISED - |   |  |   |                         |                            |                    |              |  |  |