

PROGRAM AND OFFICE ENGINEER: CHARLES F. RIDDLE, P.E. 847-705-4406 SCHAUMBURG, IL

INDEX OF SHEETS

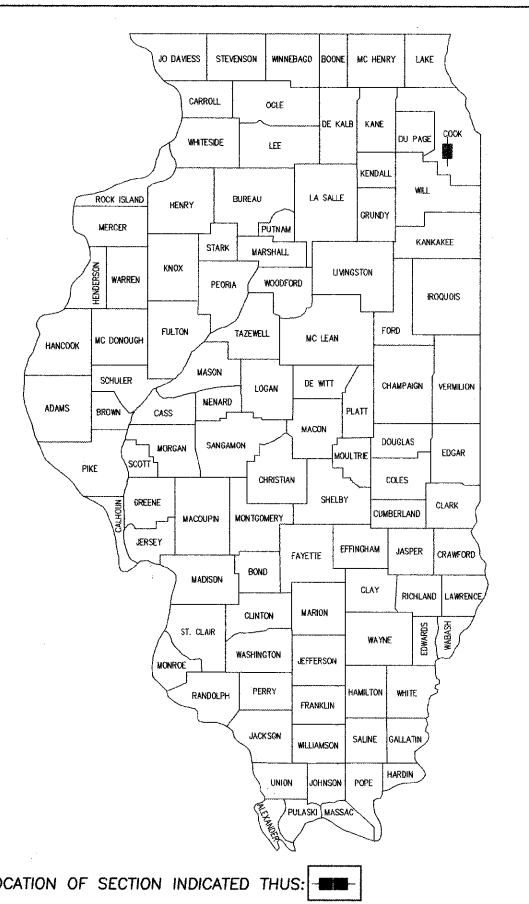
1. TITLE SHEET
- 2.-3. SUMMARY OF QUANTITIES
4. GENERAL NOTES
5. TYPICAL SECTIONS
6. EXISTING CONDITIONS / DEMOLITION PLAN
7. EXISTING CONDITIONS / DEMOLITION PLAN
8. PLAN AND PROFILE - STA. 91+50 TO STA. 95+50
9. PLAN AND PROFILE - STA. 95+50 TO STA. 99+50
10. PLAN AND PROFILE - STA. 99+50 TO STA. 103+50
11. PAVEMENT MARKING PLAN
12. EROSION CONTROL PLAN
13. EROSION CONTROL DETAILS
- 14.-19. DETAIL SHEETS
20. TRAFFIC SIGNAL INSTALLATION PLAN
ILL RTE 43 (HARLEM AV) AND ISHNALA DRIVE
21. SCHEDULE OF QUANTITIES, CABLE PLAN, PHASE DESIGNATION
DIAGRAM AND EMERGENCY VEHICLE PREEMPTION SEQUENCE
ILL RTE 43 (HARLEM AV) AND ISHNALA DRIVE
22. INTERCONNECT PLAN
23. INTERCONNECT SCHEMATIC
24. MAST ARM MOUNTED STREET NAME SIGNS
- 25.-30. DISTRICT 1 STANDARD TRAFFIC SIGNAL DESIGN DETAILS

STATE OF ILLINOIS
DEPARTMENT OF TRANSPORTATION
DIVISION OF HIGHWAYS

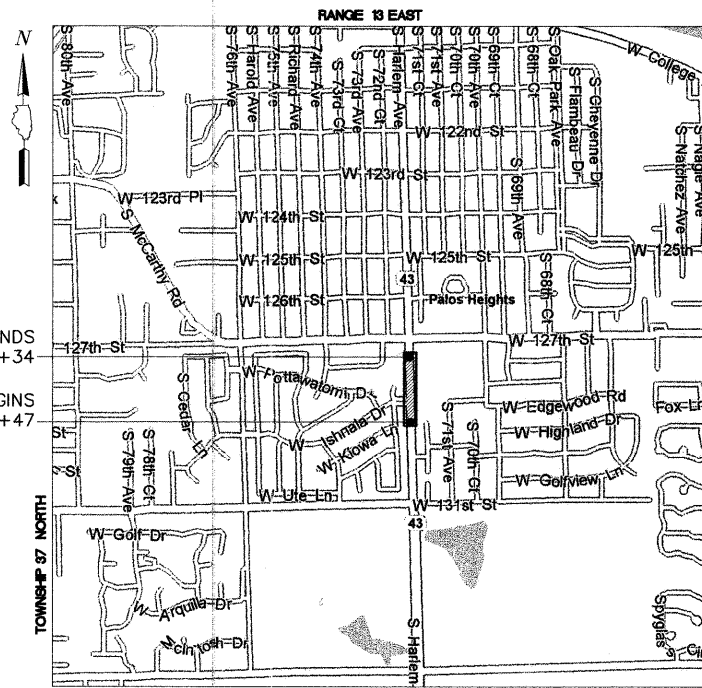
PLANS FOR PROPOSED FEDERAL AID HIGHWAY

**FAP 348 (ILL RTE 43/HARLEM AVE) AT ISHNALA DRIVE
INTERSECTION IMPROVEMENTS AND
TRAFFIC SIGNAL INSTALLATION
SECTION: 10-00047-00-TL
PROJECT NO. M-9003 (674)
CITY OF PALOS HEIGHTS, ILLINOIS
COOK COUNTY
JOB NO. C-91-693-10**

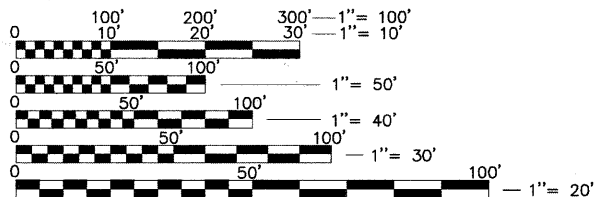
FAP RTE 348	SECTION 10-00047-00-TL	COUNTY COOK	TOTAL SHEETS 30	SHEET NO. 1
ILLINOIS FED. AID PROJECT			CONTRACT #: 63626	



PROJECT LOCATION MAP
(NOT TO SCALE)



FULL SIZE PLANS HAVE BEEN PREPARED USING STANDARD ENGINEERING SCALES. REDUCED SIZED PLANS WILL NOT CONFORM TO STANDARD SCALES. IN MAKING MEASUREMENTS ON REDUCED PLANS, THE BELOW SCALES MAY BE USED.



EXISTING UTILITIES. WHEN THE PLANS OR SPECIAL PROVISIONS INCLUDE INFORMATION PERTAINING TO THE LOCATION OF UNDERGROUND UTILITY FACILITIES, SUCH INFORMATION IS BASED ON RECORD INFORMATION PROVIDED BY THE INDIVIDUAL UTILITY OWNERS AS TO THE LOCATION OF SUCH UTILITIES AND IS ONLY INCLUDED FOR THE CONVENIENCE OF THE BIDDER. IT SHALL BE THE CONTRACTOR'S RESPONSIBILITY TO DETERMINE THE ACTUAL LOCATION OF ALL SUCH FACILITIES. HE SHALL ALSO OBTAIN FROM THE RESPECTIVE UTILITY COMPANIES, DETAILED INFORMATION RELATIVE TO THE LOCATION OF THEIR FACILITIES AND THE WORKING SCHEDULES.

CONTRACTOR IS RESPONSIBLE FOR CONTACTING J.U.L.I.E. AT 1-800-892-0123 AND MUST ACQUIRE A DIG NUMBER A MINIMUM OF 72 HOURS PRIOR TO ANY WORK BEING DONE.

CONTRACT NO. 63626

NOTE: CONSTRUCTION MEANS, METHODS AND JOB SITE SAFETY IS THE SOLE AND EXCLUSIVE RESPONSIBILITY OF THE CONTRACTOR

PROJECT INFORMATION
LENGTH OF PROJECT = 1187FT (0.22MI)
ADT (IL RTE 43) = 29100 VPD (2009)
ADT (ISHNALA) = <5000 VPD (2009)
POSTED SPEED LIMIT = 35 MPH
DESIGN SPEED = 40 MPH
ROAD CLASSIFICATION = URBAN ARTERIAL



850 Forest Edge Drive • Vernon Hills, IL. 60061
Phone: 847-478-9700 Fax: 847-478-9701

STATE OF ILLINOIS
DEPARTMENT OF TRANSPORTATION
DIVISION OF HIGHWAYS

APPROVED: October 18, 2011
Robert S. Straz
CITY OF PALOS HEIGHTS

PASSED: NOVEMBER 4, 2011
Christina Christensen
DISTRICT ONE ENGINEER OF LOCAL ROADS AND STREETS

RELEASING FOR BID
BASED ON LIMITED REVIEW: NOVEMBER 4, 2011
Diane M. O'Keefe
DEPUTY DIRECTOR OF HIGHWAYS, REGION ONE ENGINEER



10-17-11
FAP 11-30-11

GHA #2806.242

**PRINTED BY THE AUTHORITY
OF THE STATE OF ILLINOIS**