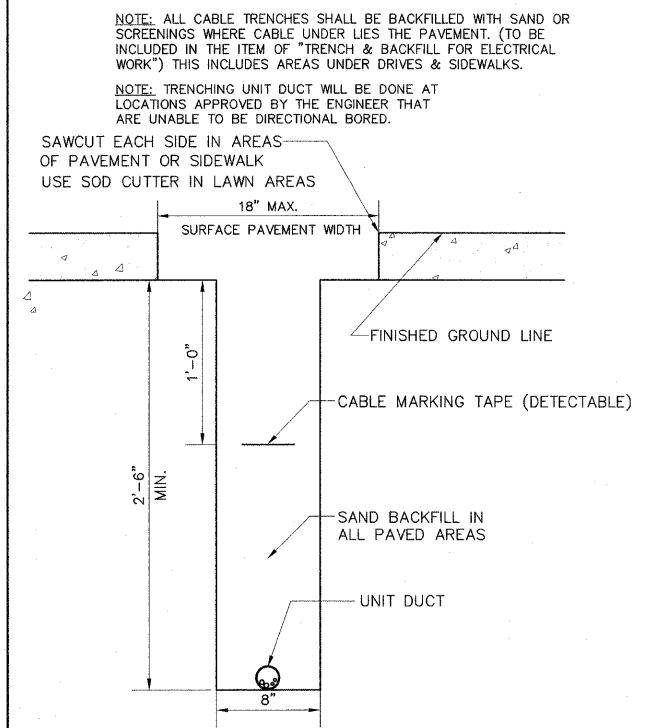


- NOTES:**
1. MULTIPLE SPLICE INSULATOR SHALL BE INSTALLED ACCORDING TO MANUFACTURER INSTRUCTION
  2. ALL LABOR AND SPLICING MATERIALS SHALL BE CONSIDERED INCIDENTAL TO THE "ROADWAY LIGHTING STANDARD" PAY ITEM.

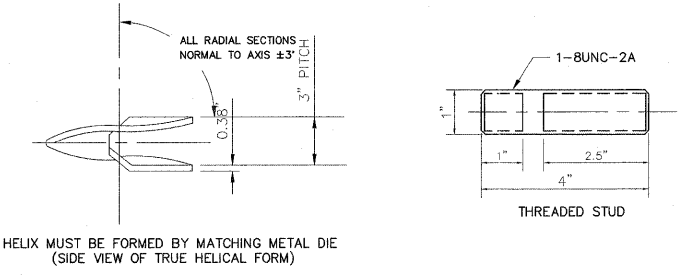
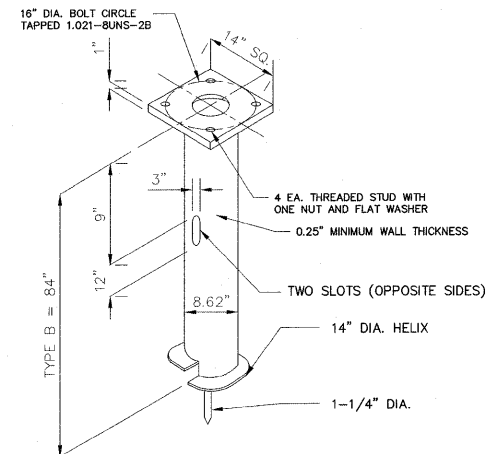


**CABLE SPLICING DETAILS IN POLE HANDHOLE**

**ROADWAY LIGHTING TRENCH DETAIL**

**-NOTES-**

- 1) FINISH: HOT DIP GALVANIZE PER ASTM-A123(LATEST REVISION)
- 2) BASEPLATE TO BE PERPENDICULAR TO SHAFT AXIS ( $\pm 1"$ ) AND HOLE CENTERLINE CONCENTRIC ( $\pm 0.188$ ) TO SHAFT AXIS.
- 3) PILOT POINT AND SHAFT AXES TO BE CONCENTRIC ( $\pm 0.125$  FIM) AND IN LINE ( $\pm 2'$ )
- 4) FLAME CUT SLOT PERPENDICULAR TO THE BASEPLATE.
- 5) PREHEAT, TUMBLEBLAST, HANDGRIND, AND CLEAN BASEPLATE, HELIX, AND PILOT POINT ON ALL WELDED AREAS.
- 6) FLAMECUT IRREGULARITIES PERMISSIBLE, 1) VALLEYS NOT TO EXCEED  $3/32"$  BELOW NOMINAL SURFACE LEVEL. 2) PEAKS OR POSITIVE IRREGULARITIES NOT TO EXCEED  $1/32"$  ABOVE NOMINAL SURFACE LEVEL OR INTERSECTIONS OF NOMINAL SURFACES.
- 7) MANUFACTURERS TO HAVE IN EFFECT INDUSTRY RECOGNIZED WRITTEN QUALITY CONTROL FOR ALL MATERIALS AND MANUFACTURING PROCESSES.
- 8) ALL MATERIALS IS TO BE NEW. UNUSED AND MILL MEETING THE FOLLOWING SPECIFICATIONS:
- a) BASEPLATE: ASTM A36-(LATEST REVISION) STRUCTURAL STEEL (CONFORM TO AASHTO TECH. BUL. #270).
- b) SHAFT: ASTM A252-(LATEST REVISION) GRADE 2, STEEL PIPE PIL ALTERNATE MATERIAL: ASTM A53-(LATEST REVISION) TYPE E OR S. GRADE B, STEEL PIPE OR ASTM A500-(LATEST REVISION) GRADE B, STRUCTURAL STEEL TUBING.
- c) HELIX: ASTM A635-(LATEST REVISION) HOT ROLLED STEEL.
- d) PILOT POINT: ASTM A575-(LATEST REVISION) STEEL BAR
- e) BOLTS:  $1" \times 4"$  SPECIAL STUD. THREADED EACH END, AS APPROVED BY MANUFACTURER.
- 9) BASEPLATE IS PERMANENTLY STAMPED WITH MANUFACTURER'S IDENTIFICATION "ABC" IN  $1/2"$  LETTERS AND DATE OF MANUFACTURE IN  $1/4"$  LETTERS.
- 10) COMPLY WITH DOMESTIC STEEL REQUIREMENTS.
- 11) ALL WELDS SHALL BE CONTINUOUS AND NOT LESS THAN  $1/4"$  FILLET WELDS. THE WELDED FOUNDATION SHALL BE CAPABLE OF WITHSTANDING 10,000 FT/LBS. OF INSTALLATION TORQUE APPLIED ABOUT THE AXIS OF THE FOUNDATION.
- 12) ALL HEXAGON NUTS AND WASHERS SHALL BE PROVIDED AS APPROVED BY THE MANUFACTURER.



**METAL POLE FOUNDATION, 16" BOLT CIRCLE 8" x 7'**

FILE NAME = FAU 2775 (OAK PARK AVENUE)	USER NAME =	DESIGNED -- BAH	REVISED -- BAH 7-11-11
FAP 0311 (OSDEN AVENUE) TO FAU 3734 (34TH STREET)		DRAWN -- BAH	REVISED -- BAH 10-14-11
FAU 1468 (31ST STREET TO FAU 1453 (CERMAK ROAD))	PLOT SCALE =	CHECKED -- JEF	REVISED --
OAK PARK AVENUE ARTERIAL STREET LIGHTING	PLOT DATE =	DATE -- 5-31-11	REVISED --

**STATE OF ILLINOIS  
DEPARTMENT OF TRANSPORTATION**

<b>CONSTRUCTION DETAILS</b>			
SCALE: NONE	SHEET NO. OF SHEETS	STA.	TO STA.

**Frank Novotny & Associates, Inc.**  
Civil Engineers  
107 Midway Drive • Willmetts, IL • 60127 • Telephone: (630) 837-6640 • Fax: (630) 837-0132  
ILLINOIS PROFESSIONAL DESIGN FIRM NO. 184-000928

F.A.U. RTE. 2775	SECTION 05-00162-00-LS	COUNTY COOK	TOTAL SHEETS 25	SHEET NO. 20
FED. ROAD DIST. NO. ILLINOIS			CONTRACT NO. 63628	
ILLINOIS			FED. AID PROJECT HPP-3465(002)	