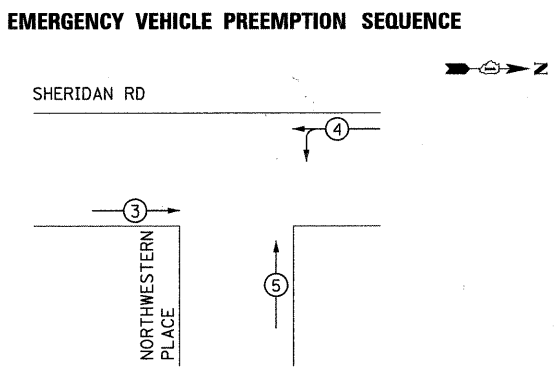


**LEGEND:**

- (\*) DUAL ENTRY PHASE
- (\*) SINGLE ENTRY PHASE
- (\*) PEDESTRIAN PHASE
- OL
- \* NUMBER REFERS TO ASSOCIATED PHASE

OVERLAP PROT. PERM.  
LETTER PHASE PHASE  
D 1 8

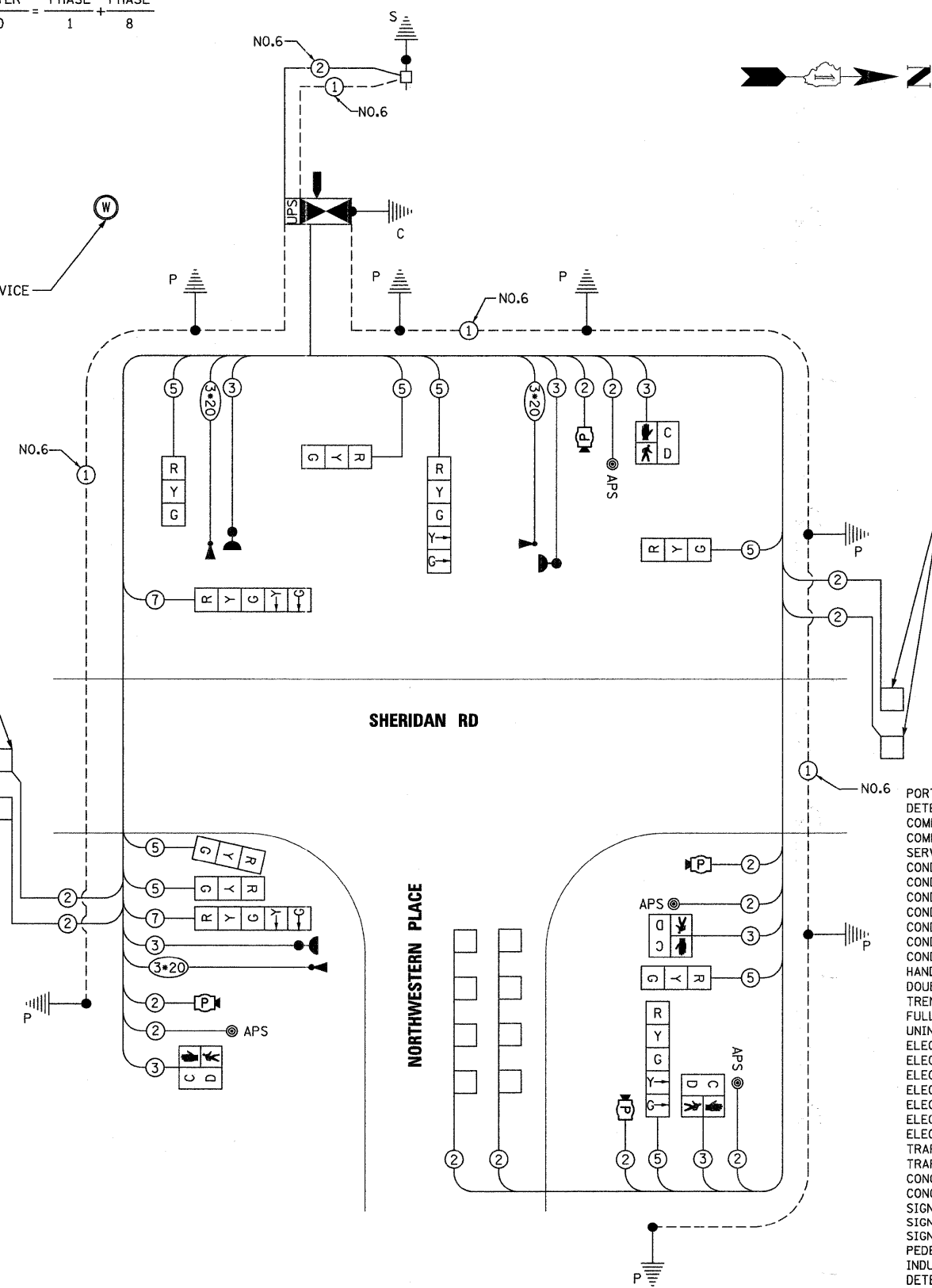


PROPOSED EMERGENCY VEHICLE PREEMPTORS			
EMERGENCY VEHICLE PREEMPTOR	3	4	5
MOVEMENT	→	↶	↑

I.D.O.T. TRAFFIC SIGNAL INSTALLATION ELECTRICAL SERVICE REQUIREMENTS					TOTAL WATTAGE
TYPE	NO. OF LAMPS	WATTAGE INCAND.	LED% OPERATION		
SIGNAL (RED)	10		17	0.50	85.00
(YELLOW)	10		25	0.25	62.50
(GREEN)	10		15	0.25	37.50
ARROW	8		12	0.10	9.60
PED. SIGNAL	4		25	1.00	100.00
CONTROLLER	1		100	1.00	100.00
ILLUM. SIGN	-		25	0.05	-
FLASHER				0.50	
ENERGY COSTS TO:				TOTAL =	394.60

ILLINOIS DEPARTMENT OF TRANSPORTATION  
DIVISION OF HIGHWAY/DISTRICT 1  
201 WEST CENTER COURT/SCHAUMBURG, ILLINOIS 60196-1096  
ENERGY SUPPLY: CONTACT: LARRY SHANK  
PHONE: (847) 816-5465  
COMPANY: COMED

INTERSECTION AND SAMPLING (SYSTEM) DETECTORS



**RESTORATION OF WORK AREA**

RESTORATION OF THE TRAFFIC SIGNAL WORK AREA SHALL BE INCIDENTAL TO THE RELATED PAY ITEM SUCH AS FOUNDATION, CONDUIT HANDHOLE, TRENCH AND BACKFILL, ETC., AND NO EXTRA COMPENSATION SHALL BE ALLOWED. ALL ROADWAY SURFACES SUCH AS SHOULDERS, MEDIANS, SIDEWALKS, PAVEMENT, ETC. SHALL BE REPLACED IN KIND, ALL DAMAGE TO MOWED LAWNS SHALL BE REPLACED WITH AN APPROVED SOD, AND ALL DAMAGE TO UNMOWED FIELDS SHALL BE SEEDING IN ACCORDANCE WITH STANDARD SPECIFICATIONS 252 AND 250 RESPECTIVELY.

**NOTE:**

THE TRAFFIC SIGNAL CONTROLLER EQUIPMENT FOR THIS PROJECT SHALL BE "EAGLE" TO MATCH THE EXISTING ADJACENT SYSTEM.

THE END OF THE TRACER CABLE SHALL BE CONTINUOUS AND EXTEND INTO THE CONTROLLER CABINET.

INTERSECTION AND SAMPLING (SYSTEM) DETECTORS

**SCHEDULE OF QUANTITIES**

ITEM	UNIT	TOTAL
PORTLAND CEMENT CONCRETE SIDEWALK 5 INCH	SQ FT	262
DETECTABLE WARNINGS	SQ FT	24
COMBINATION CURB AND GUTTER REMOVAL	FOOT	36
COMBINATION CONCRETE CURB AND GUTTER, TYPE B-6.12	FOOT	36
SERVICE INSTALLATION - POLE MOUNTED	EACH	1
CONDUIT IN TRENCH, 2" DIA., GALVANIZED STEEL	FOOT	1,018
CONDUIT IN TRENCH, 2 1/2" DIA., GALVANIZED STEEL	FOOT	168
CONDUIT IN TRENCH, 3" DIA., GALVANIZED STEEL	FOOT	6
CONDUIT IN TRENCH, 5" DIA., GALVANIZED STEEL	FOOT	10
CONDUIT PUSHED, 2" DIA., GALVANIZED STEEL	FOOT	210
CONDUIT PUSHED, 2 1/2" DIA., GALVANIZED STEEL	FOOT	20
CONDUIT PUSHED, 4" DIA., GALVANIZED STEEL	FOOT	152
HANDHOLE	EACH	5
DOUBLE HANDHOLE	EACH	1
TRENCH AND BACKFILL FOR ELECTRICAL WORK	FOOT	932
FULL-ACTUATED CONTROLLER AND TYPE IV CABINET	EACH	1
UNINTERRUPTIBLE POWER SUPPLY	EACH	1
ELECTRIC CABLE IN CONDUIT, SIGNAL NO. 14 2C	FOOT	909
ELECTRIC CABLE IN CONDUIT, SIGNAL NO. 14 3C	FOOT	767
ELECTRIC CABLE IN CONDUIT, SIGNAL NO. 14 5C	FOOT	570
ELECTRIC CABLE IN CONDUIT, SIGNAL NO. 14 7C	FOOT	386
ELECTRIC CABLE IN CONDUIT, LEAD-IN, NO. 14 1 PAIR	FOOT	1,267
ELECTRIC CABLE IN CONDUIT, SERVICE, NO. 6 2 C	FOOT	573
ELECTRIC CABLE IN CONDUIT, EQUIPMENT GROUNDING CONDUCTOR, NO. 6 1C	FOOT	925
TRAFFIC SIGNAL POST, 16 FT.	EACH	1
TRAFFIC SIGNAL POST, 18 FT.	EACH	5
CONCRETE FOUNDATION, TYPE A	FOOT	24
CONCRETE FOUNDATION, TYPE C	FOOT	4
SIGNAL HEAD, LED, 1-FACE, 3-SECTION, BRACKET MOUNTED	EACH	3
SIGNAL HEAD, LED, 1-FACE, 5-SECTION, BRACKET MOUNTED	EACH	1
SIGNAL HEAD, LED, 2-FACE, 1-3 SECTION, 1-5 SECTION, BRACKET MOUNTED	EACH	3
PEDESTRIAN SIGNAL HEAD, LED, 1-FACE, BRACKET MOUNTED WITH COUNTDOWN TIMER	EACH	4
INDUCTIVE LOOP DETECTOR	EACH	5
DETECTOR LOOP, TYPE I	FOOT	180
LIGHT DETECTOR, SPECIAL	EACH	3
ELECTRIC CABLE IN CONDUIT NO. 20 3/C, TWISTED, SHIELDED	FOOT	238
MICROWAVE DETECTION UNIT	EACH	4
ACCESSIBLE PEDESTRIAN SIGNALS	EACH	4
VIBROTACTILE FEATURE	EACH	4
LIGHT DETECTOR AMPLIFIER	EACH	1
WIRELESS COMMUNICATION DEVICE	EACH	1



FILE NAME = 13_023301-sh1-cp009.dgn	USER NAME = USER8291	DESIGNED - THG/MPW	REVISED -
		DRAWN - THG/MPW	REVISED -
		CHECKED - SRS	REVISED -
		DATE - 08/16/11	REVISED -

STATE OF ILLINOIS  
DEPARTMENT OF TRANSPORTATION

SCHEDULE OF QUANTITIES, CABLE PLAN, PHASE DESIGNATION  
DIAGRAM AND EMERGENCY VEHICLE PREEMPTION SEQUENCE  
SHERIDAN ROAD AND NORTHWESTERN PLACE

F.A.U. RTE. 2853	SECTION 10-00258-00TL	COUNTY COOK	TOTAL SHEETS 38	SHEET NO. 13
SCALE: N.T.S.			CONTRACT NO. 63630	
SHEET NO. OF SHEETS STA. TO STA.		ILLINOIS FED. AID PROJECT		