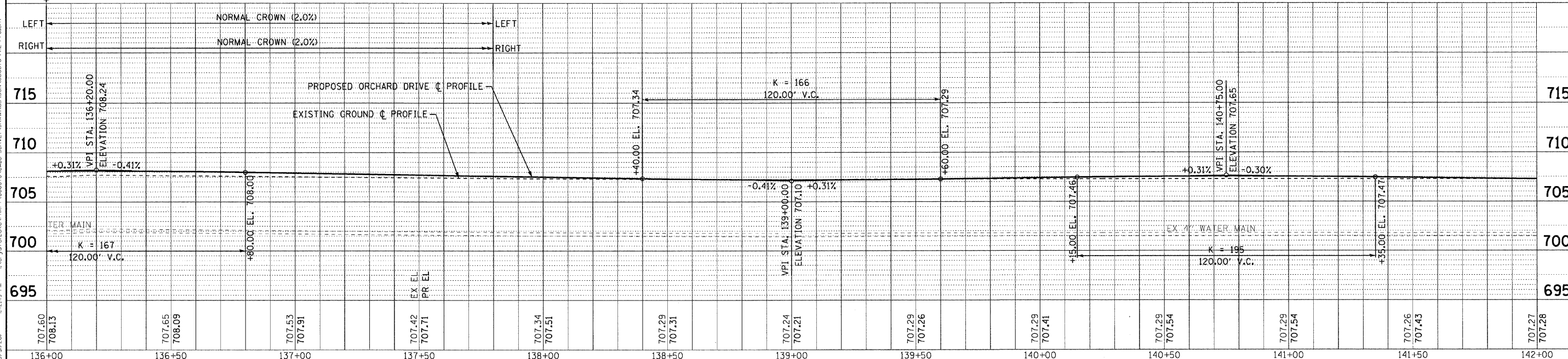


ORCHARD DRIVE

NOTE:
ALL DIMENSIONS AND ELEVATIONS
ARE TO THE EDGE OF PAVEMENT
UNLESS OTHERWISE NOTED.



707.60 708.13	707.65 708.09	707.53 707.91	707.42 707.71	707.34 707.51	707.29 707.31	707.24 707.21	707.29 707.26	707.29 707.41	707.29 707.54	707.29 707.54	707.26 707.43	707.27 707.28
136+00	136+50	137+00	137+50	138+00	138+50	139+00	139+50	140+00	140+50	141+00	141+50	142+00



DESIGNED - TLH	REVISED -
DRAWN - UKB	REVISED -
CHECKED - TAO	REVISED -
DATE - 10/24/11	FILE - 060670-PH2-PP8.sht

STATE OF ILLINOIS
ORCHARD DRIVE IMPROVEMENTS

GEOMETRIC PLAN AND PROFILE
ORCHARD DRIVE

SCALE: HORIZ. 1"=20' / VERT. 1"=5'

STA. 136+00 TO STA. 142+00

F.A.L. RTE. 2836	SECTION 06-00090-00-FP	COUNTY COOK	TOTAL SHEETS 200	SHEET NO. 35
FED. ROAD DIST. NO. 1 ILLINOIS		FED. AID PROJECT M-8003661		CONTRACT NO. 63635

COPYRIGHT © 2011 BY BAXTER & WOODMAN, INC.
 STATE OF ILLINOIS - PROFESSIONAL DESIGN FIRM
 LICENSE NO. - 06-00090-00-FP
 363636