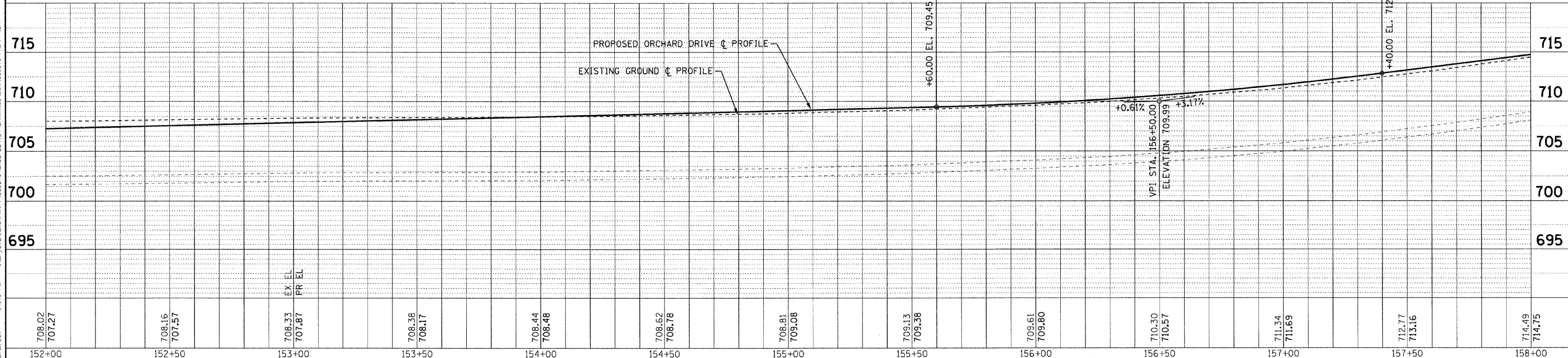
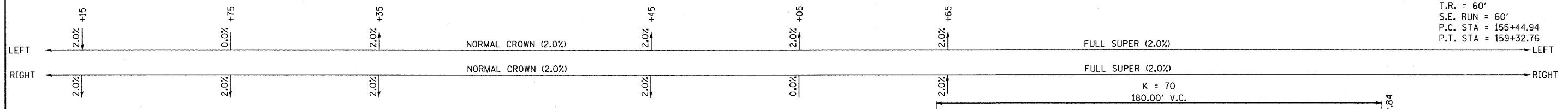


ORCHARD DRIVE



PROP. CURVE ORCHARD-10
 PI STA. = 157+45.90
 $\Delta = 37^\circ 02' 03''$ (LT)
 $D = 9^\circ 32' 57''$
 $R = 600.00'$
 $T = 200.96'$
 $L = 387.82'$
 $E = 32.76'$
 $e = 2\%$
 $T.R. = 60'$
 $S.E. RUN = 60'$
 $P.C. STA = 155+44.94$
 $P.T. STA = 159+32.76$

NOTE:
 ALL DIMENSIONS AND ELEVATIONS
 ARE TO THE EDGE OF PAVEMENT
 UNLESS OTHERWISE NOTED.

COPYRIGHT © 2011 BY BAXTER & WOODMAN, INC.
 STATE OF ILLINOIS - PROFESSIONAL DESIGN FIRM
 No. - BR-00000000-0000-0000-0000-0000-0000
 10/24/2011

	DESIGNED - TLH	REVISED -	STATE OF ILLINOIS ORCHARD DRIVE IMPROVEMENTS	GEOMETRIC PLAN AND PROFILE ORCHARD DRIVE		F.A.U. RTE.	SECTION	COUNTY	TOTAL SHEETS	SHEET NO.
	DRAWN - UKB	REVISED -				2836	06-00090-00-FP	COOK	200	38
CHECKED - TAO	REVISED -	DATE - 10/24/11	FILE - 060670-PH2-PP11.shx	SCALE: HORIZ. 1"=20' / VERT. 1"=5'		STA. 152+00 TO STA. 158+00		CONTRACT NO. 63635		
						FED. ROAD DIST. NO. 1 ILLINOIS		FED. AID PROJECT M-80036611		