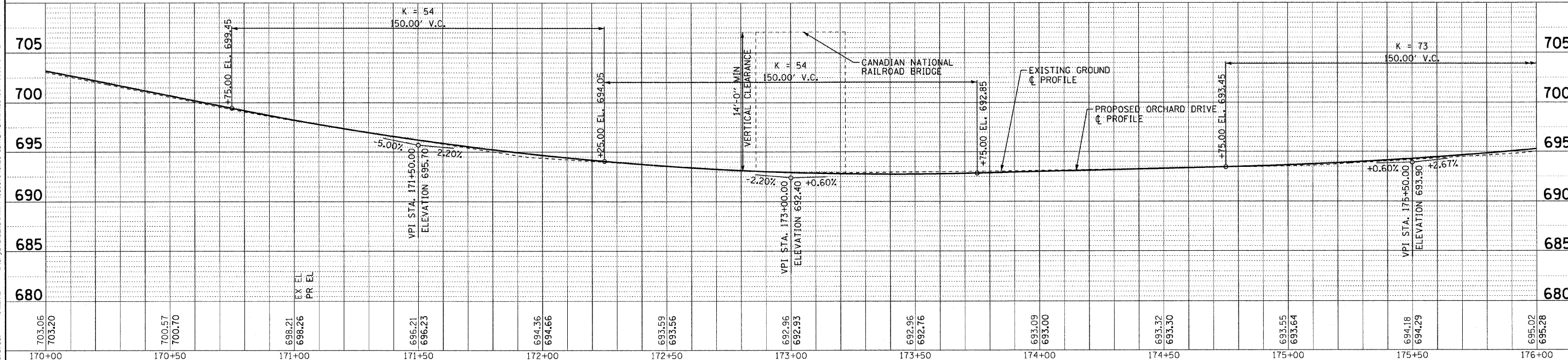


NOTE: ALL DIMENSIONS AND ELEVATIONS ARE TO THE EDGE OF PAVEMENT UNLESS OTHERWISE NOTED.



	DESIGNED - TLH	REVISED -	STATE OF ILLINOIS ORCHARD DRIVE IMPROVEMENTS	GEOMETRIC PLAN AND PROFILE ORCHARD DRIVE		F.A.J. RTE. 2836	SECTION 06-00090-00-FP	COUNTY COOK	TOTAL SHEETS 200	SHEET NO. 41	
	DRAWN - UKB	REVISED -		SCALE: HORIZ. 1"=20' / VERT. 1"=5'	STA. 170+00 TO STA. 176+00	FED. ROAD DIST. NO. 1	ILLINOIS	FED. AID PROJECT	M-8003(6661)	CONTRACT NO. 63635	
	CHECKED - TAO	REVISED -									
	DATE - 10/24/11	FILE - 060670-PH2-PP14.sht									

COPYRIGHT © 2011 BY BAXTER & WOODMAN, INC.
 STATE OF ILLINOIS - PROFESSIONAL DESIGN FIRM
 NO. 06-00090-00-FP
 DATE 10/24/11