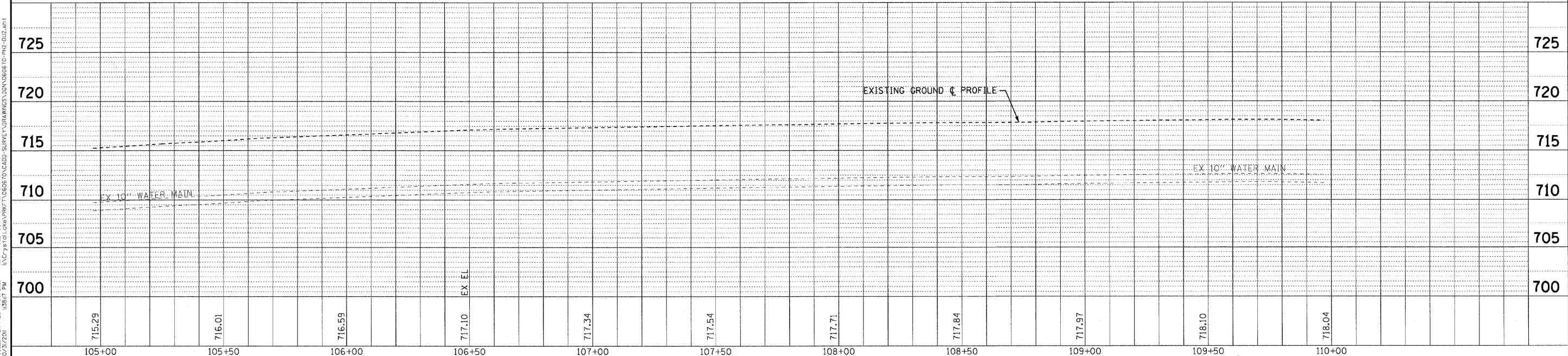


## ORCHARD DRIVE



COPYRIGHT © 2011 BY BAXTER & WOODMAN, INC.  
 STATE OF ILLINOIS - PROFESSIONAL DESIGN FIRM  
 LICENSE NO. - BR 0027201  
 PROJECT NO. - 060670-PH2-DU2.shp



DESIGNED - AMM	REVISED -
DRAWN - MAC	REVISED -
CHECKED - JAO	REVISED -
DATE - 10/24/11	FILE - 060670-PH2-DU2.shp

**STATE OF ILLINOIS  
ORCHARD DRIVE IMPROVEMENTS**

<b>DRAINAGE AND UTILITY ORCHARD DRIVE</b>	
SCALE: HORIZ. 1"=20' / VERT. 1"=5'	STA. 105+00 TO STA. 110+00

F.A.U. RTE. 2836	SECTION 06-00090-00-FP	COUNTY COOK	TOTAL SHEETS 200	SHEET NO. 62
FED. ROAD DIST. NO. 1 ILLINOIS		FED. AID PROJECT M-8003(661)		CONTRACT NO. 63635