

MATCH LINE STA. 136+00 - SEE SHEET NO. 67

MATCH LINE STA. 142+00 - SEE SHEET NO. 69

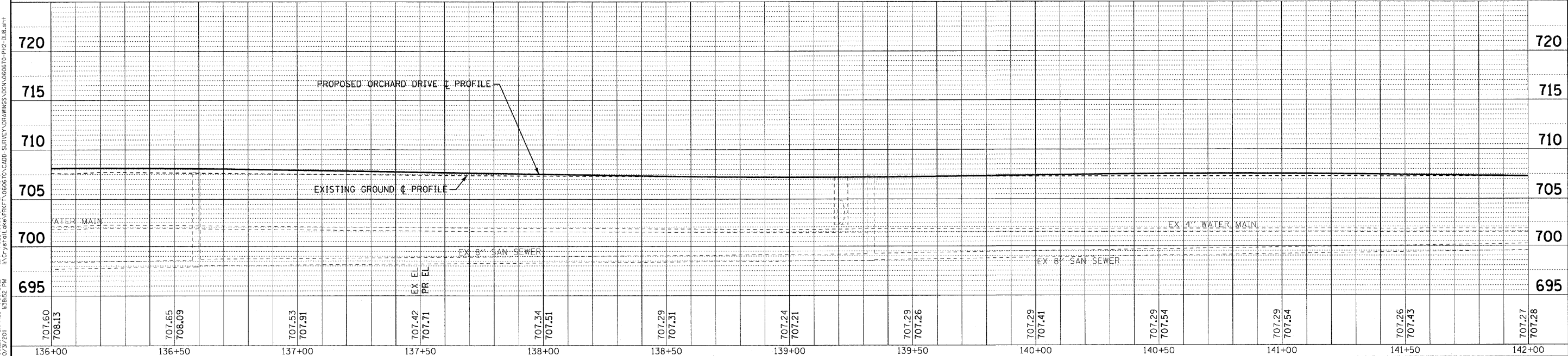
PIPES

NO.	DESCRIPTION	TY	DIA. (IN)	LENGTH (LF)	SLOPE	TBF (CY)
P-7	STORM SEWERS, CLASS A	1	12	8	0.50%	2
P-8	STORM SEWER (WATER MAIN REQUIREMENTS)		12	8	0.50%	2

STORM STRUCTURES

LABEL	STATION	OFFSET (FT)	TYPE	FRAME	ELEVATION	RIM/EP	INVERT
S-8	139+11	24.3	RT CATCH BASIN, TYPE C	T-11V F&G	706.78	EP	704.36 12"N
S-8A	139+21	24.3	RT MANHOLE, TYPE A, 5' DIA.	T-1 F, O.L.	706.77	EP	704.32 12"S; 702.21 36"E(ex),W(ex)
S-9	139+09	20.5	LT CATCH BASIN, TYPE C	T-11V F&G	706.87	EP	704.45 12"N
S-10	139+19	20.5	LT MANHOLE, TYPE A, 5' DIA.	T-11 F&G	706.86	EP	704.41 12"S; 701.69 36"E(ex),W(ex)

ORCHARD DRIVE



	DESIGNED - AMM DRAWN - MAC CHECKED - TAO DATE - 10/24/11	REVISED - REVISED - REVISED - FILE - 060670-PH2-DU8.shx	STATE OF ILLINOIS ORCHARD DRIVE IMPROVEMENTS	DRAINAGE AND UTILITY ORCHARD DRIVE	F.A.J. RTE. 2836 SECTION 06-00090-00-FP COUNTY COOK TOTAL SHEETS 200 SHEET NO. 68 CONTRACT NO. 63635
--	---	--	---	---	---

SCALE: HORIZ. 1"=20' / VERT. 1"=5'
 STA. 136+00 TO STA. 142+00
 FED. ROAD DIST. NO. 1 ILLINOIS FED. AID PROJECT M-800366J

COPYRIGHT © 2011 BY BAXTER & WOODMAN, INC.
 STATE OF ILLINOIS - PROFESSIONAL DESIGN FIRM
 LICENSE NO. - BR-0607208
 PROJECT NO. - 060670-PH2-DU8.shx