

\* COST INCLUDES PLACEMENT OF STRUCTURE OVER EXISTING STORM SEWER AND RECONNECTION

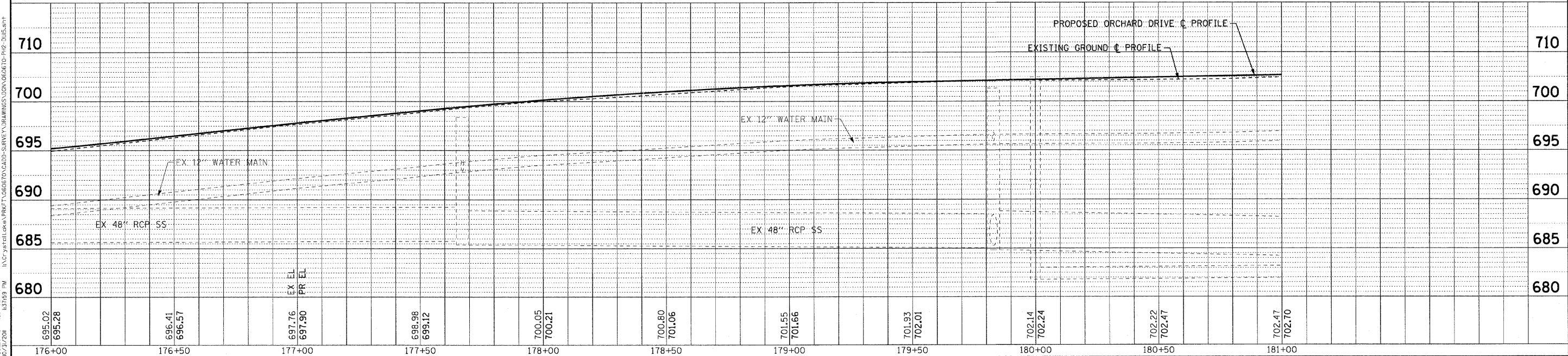
STORM STRUCTURES

LABEL	STATION	OFFSET (FT)	TYPE	FRAME	ELEVATION	RIM/EP	INVERT
S-38A	177+61	18.0	RT CATCH BASIN, TYPE A, 4' DIA.	T-24 F&G	698.90	EP	693.55 15"E(ex); 693.20 15"W(ex)
S-39	179+43	20.5	LT CATCH BASIN, TYPE A, 4' DIA.	T-11V F&G	701.59	EP	697.24 12"SW(ex),NE(ex)
S-39A	180+90	20.5	LT INLET, TYPE A	T-11V F&G	702.19	EP	698.95 12"SW

PIPES

NO.	TY	DIA. (IN)	LENGTH (LF)	SLOPE	TBF (CY)
P-27A	STORM SEWERS, CLASS A	12	6	1.83%	1

### ORCHARD DRIVE



DESIGNED - AMM	REVISED -
DRAWN - UKB	REVISED -
CHECKED - TAO	REVISED -
DATE - 10/24/11	FILE - 060670-PH2-DUI5.shp

#### STATE OF ILLINOIS ORCHARD DRIVE IMPROVEMENTS

#### DRAINAGE AND UTILITY ORCHARD DRIVE

SCALE: HORIZ. 1"=20' / VERT. 1"=5'

STA. 176+00 TO STA. 181+00

F.A.U. RTE. 2836	SECTION 06-00090-00-FP	COUNTY COOK	TOTAL SHEETS 200	SHEET NO. 75
FED. ROAD DIST. NO. 1 ILLINOIS		FED. AID PROJECT	CONTRACT NO. 63635	
M-8003(661)				

COPYRIGHT © 2011 BY BAXTER & WOODMAN, INC.  
 STATE OF ILLINOIS - PROFESSIONAL DESIGN FIRM  
 LICENSE NO. - BF 007208  
 PROJECT NO. - 060670-PH2-DUI5.shp