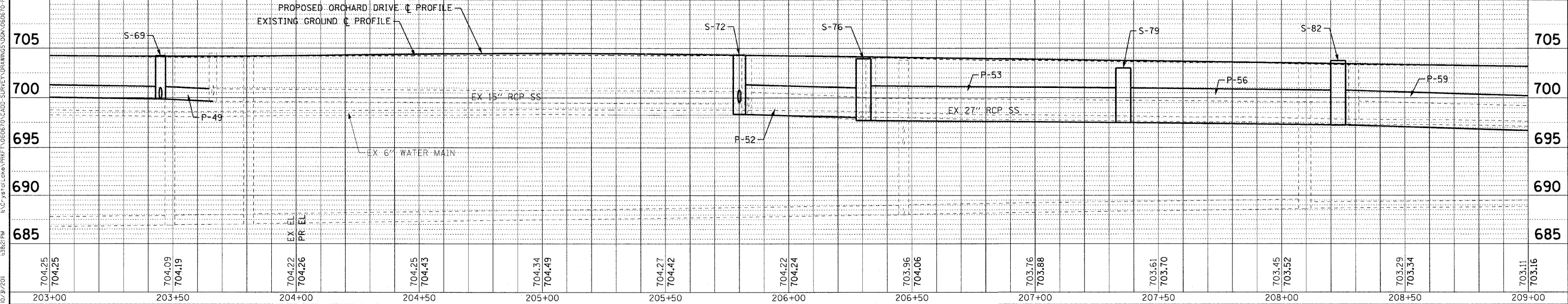


PIPES						
NO.	TYPE	TY	DIA. (IN)	LENGTH (LF)	SLOPE	TBF (CY)
P-47	STORM SEWERS, CLASS A	1	15	9	0.44%	2
P-48	STORM SEWERS, CLASS A	1	15	40	0.35%	15
P-49	STORM SEWERS, RUBBER GASKET, CLASS A	2	15	23	0.35%	10
P-50	STORM SEWERS, CLASS A	1	12	12	0.83%	4
P-51	STORM SEWER, (WATER MAIN REQUIREMENTS)	1	12	63	0.44%	17
P-51A	STORM SEWERS, CLASS A	2	15	62	0.40%	25
P-52	STORM SEWERS, RUBBER GASKET, CLASS A	1	36	51	0.69%	47
P-53	STORM SEWERS, CLASS A	1	42	105	0.20%	17
P-54	STORM SEWERS, RUBBER GASKET, CLASS A	1	12	41	0.49%	11
P-55	STORM SEWERS, CLASS A	1	12	10	2.00%	1
P-56	STORM SEWERS, CLASS A	1	42	94	0.27%	32
P-57	STORM SEWERS, RUBBER GASKET, CLASS A	1	12	41	0.49%	11
P-58	STORM SEWERS, CLASS A	1	12	14	1.43%	3
P-59	STORM SEWERS, CLASS A	1	42	85	0.69%	23

STORM STRUCTURES

LABEL	STATION	OFFSET (FT)	TYPE	FRAME	ELEVATION	RIM/EP	INVERT
S-69	203+45	30.0	LT MANHOLE, TYPE A, 4' DIA.	T-1 F, C.L.	704.25	RIM	699.88 15°S,E
S-70	203+44	20.5	LT CATCH BASIN, TYPE A, 4' DIA.	T-11V F&G	703.78	EP	699.84 15°E,W
S-71	203+42	20.5	RT CATCH BASIN, TYPE A, 4' DIA.	T-11V F&G	703.78	EP	699.70 15°W,NE
S-72	205+80	36.7	RT MANHOLE, TYPE A, 5' DIA.	T-1 F, O.L.	704.35	EP	698.35 36°N; 699.55 15°W; 699.40 15°S(ex); 698.50 24°E(ex)
S-73	205+82	35.0	LT INLET, TYPE A	T-11V F&G	703.75	EP	700.50 12°NE
S-74	205+90	26.0	LT MANHOLE, TYPE A, 4' DIA.	T-1 F, C.L.	703.78	RIM	699.80 15°E; 700.40 12°SW
S-75	206+73	20.5	LT INLET, TYPE A	T-11V F&G	703.96	EP	700.48 12° N
S-76	206+31	35.5	RT MANHOLE, TYPE A, 6' DIA.	T-1 F, O.L.	703.96	EP	698.00 36°S; 697.71 42°N
S-77	207+36	20.5	LT CATCH BASIN, TYPE C	T-11V F&G	703.34	EP	700.20 12°E,S
S-78	207+36	20.5	RT CATCH BASIN, TYPE A, 4' DIA.	T-11V F&G	703.34	EP	700.00 12°E,W
S-79	207+36	31.0	RT MANHOLE, TYPE A, 6' DIA.	T-1 F, C.L.	703.00	RIM	697.50 42°N,S; 699.80 12°W
S-80	208+26	20.5	LT INLET, TYPE A	T-11V F&G	703.02	EP	699.90 12°E
S-81	208+26	20.5	RT CATCH BASIN, TYPE A, 4' DIA.	T-11V F&G	703.09	EP	699.70 12°E,W
S-82	208+26	33.3	RT MANHOLE, TYPE A, 6' DIA.	T-1 F, C.L.	703.75	RIM	697.25 42°N,S; 699.50 12°W

ORCHARD DRIVE



COPYRIGHT © 2015 BY BAXTER & WOODMAN, INC. ALL RIGHTS RESERVED. PROJECT NO. 06-00021-EXPRES 10/31/2015 13:22:PM
 PROJECT: 06-00021-EXPRES 10/31/2015 13:22:PM
 DRAWING: 06-00021-EXPRES 10/31/2015 13:22:PM
 FILE: 060670-PH2-DU20.sht



DESIGNED - AMM	REVISED -
DRAWN - LKB	REVISED -
CHECKED - TAO	REVISED -
DATE - 10/24/11	FILE - 060670-PH2-DU20.sht

STATE OF ILLINOIS
ORCHARD DRIVE IMPROVEMENTS

DRAINAGE AND UTILITY
ORCHARD DRIVE

SCALE: HORIZ. 1"=20' / VERT. 1"=5'

STA. 203+00 TO STA. 209+00

F.A.U. RTE.	SECTION	COUNTY	TOTAL SHEETS	SHEET NO.
2836	06-00090-00-FP	COOK	200	80
FED. ROAD DIST. NO. 1 ILLINOIS FED. AID PROJECT			CONTRACT NO. 63635	
			M-8003661	