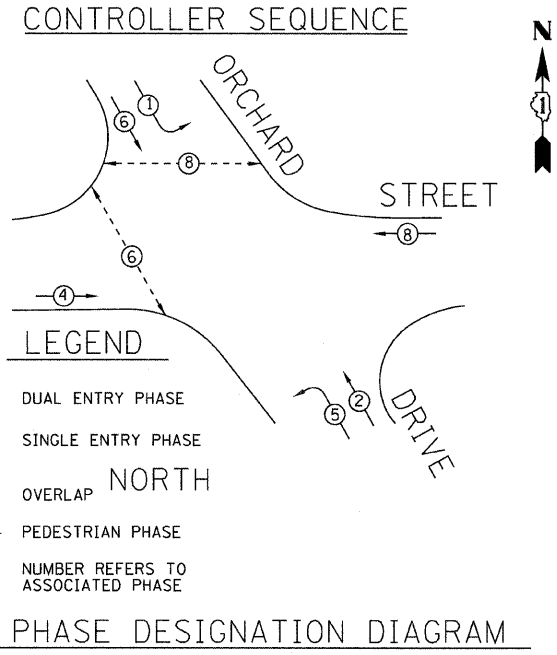
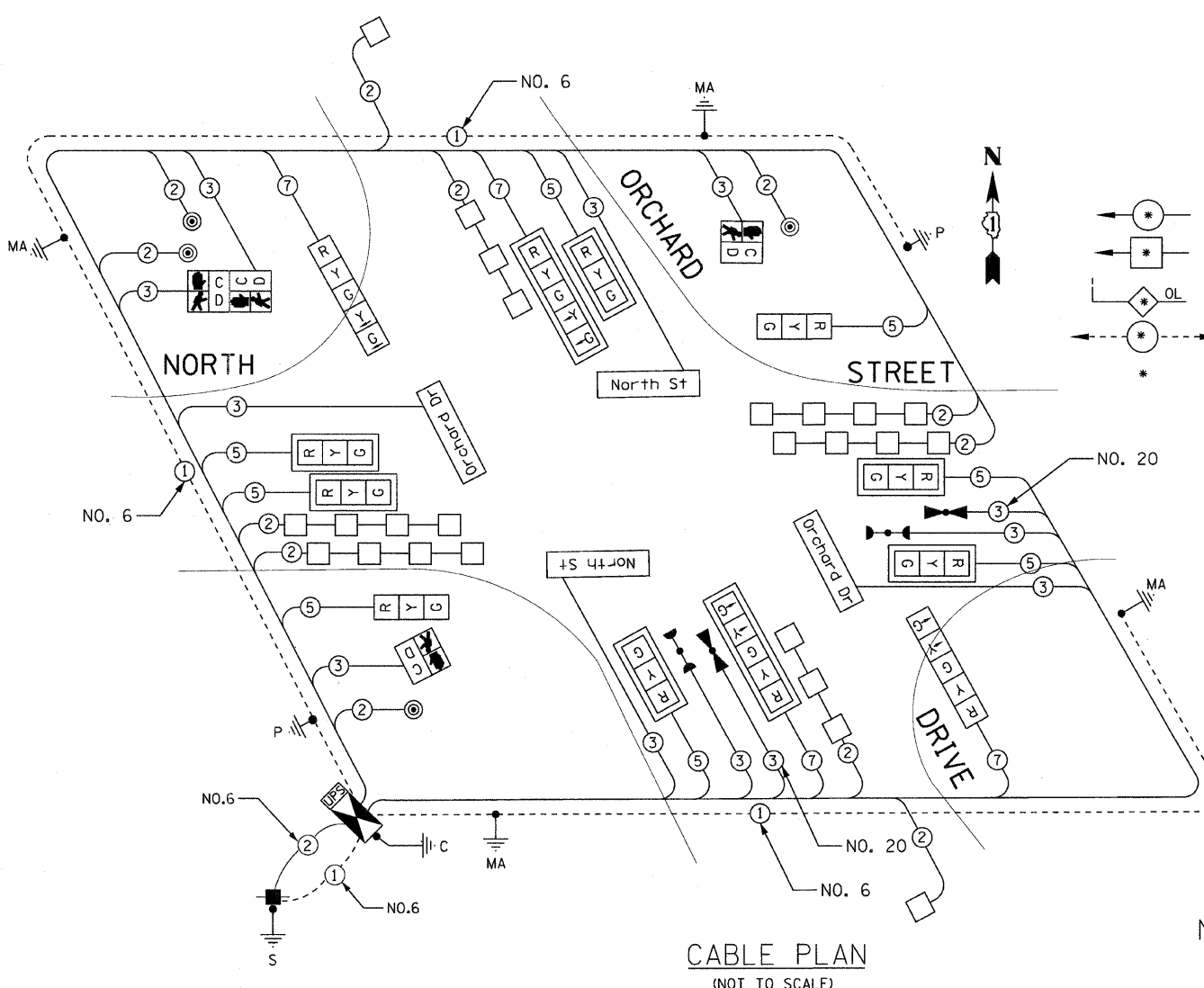
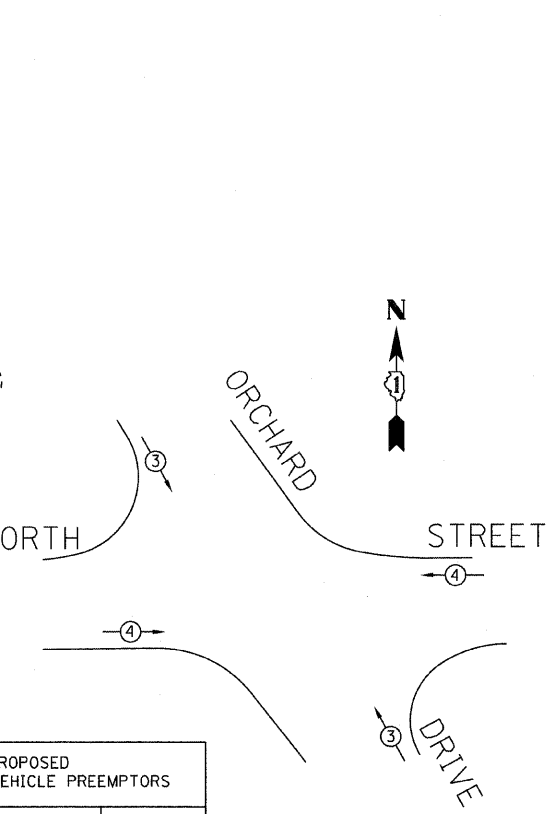


SCHEDULE OF QUANTITIES

80500020 SERVICE INSTALLATION - POLE MOUNTED	EACH	1
81028200 UNDERGROUND CONDUIT, GALVANIZED STEEL, 2" DIA.	FOOT	949
81028210 UNDERGROUND CONDUIT, GALVANIZED STEEL, 2 1/2" DIA.	FOOT	31
81028220 UNDERGROUND CONDUIT, GALVANIZED STEEL, 3" DIA.	FOOT	67
81028240 UNDERGROUND CONDUIT, GALVANIZED STEEL, 4" DIA.	FOOT	325
81400100 HANDHOLE	EACH	5
81400200 HEAVY-DUTY HANDHOLE	EACH	2
81400300 DOUBLE HANDHOLE	EACH	2
85700200 FULL-ACTUATED CONTROLLER AND TYPE IV CABINET	EACH	1
86200300 UNINTERRUPTIBLE POWER SUPPLY, EXTENDED	EACH	1
87301215 ELECTRIC CABLE IN CONDUIT, SIGNAL, NO. 14 2C	FOOT	885
87301225 ELECTRIC CABLE IN CONDUIT, SIGNAL, NO. 14 3C	FOOT	1272
87301245 ELECTRIC CABLE IN CONDUIT, SIGNAL, NO. 14 5C	FOOT	1312
87301255 ELECTRIC CABLE IN CONDUIT, SIGNAL, NO. 14 7C	FOOT	860
87301305 ELECTRIC CABLE IN CONDUIT, LEAD-IN, NO. 14 1 PAIR	FOOT	1443
87301800 ELECTRIC CABLE IN CONDUIT, SERVICE, NO. 4 2 C	FOOT	421
87301900 ELECTRIC CABLE IN CONDUIT, EQUIPMENT GROUNDING CONDUCTOR, NO. 6 1C	FOOT	458
87502480 TRAFFIC SIGNAL POST, GALVANIZED STEEL 14 FT.	EACH	2
87700220 STEEL MAST ARM ASSEMBLY AND POLE, 36 FT.	EACH	1
87700230 STEEL MAST ARM ASSEMBLY AND POLE, 38 FT.	EACH	1
87700240 STEEL MAST ARM ASSEMBLY AND POLE, 40 FT.	EACH	1
87700260 STEEL MAST ARM ASSEMBLY AND POLE, 44 FT.	EACH	1
87800100 CONCRETE FOUNDATION, TYPE A	FOOT	8
87800150 CONCRETE FOUNDATION, TYPE C	FOOT	4
87800400 CONCRETE FOUNDATION, TYPE E 30-INCH DIAMETER	FOOT	27
87800415 CONCRETE FOUNDATION, TYPE E 36-INCH DIAMETER	FOOT	26
88030020 SIGNAL HEAD, LED, 1-FACE, 3-SECTION, MAST-ARM MOUNTED	EACH	6
88030050 SIGNAL HEAD, LED, 1-FACE, 3-SECTION, BRACKET MOUNTED	EACH	2
88030100 SIGNAL HEAD, LED, 1-FACE, 5-SECTION, BRACKET MOUNTED	EACH	2
88030110 SIGNAL HEAD, LED, 1-FACE, 5-SECTION, MAST-ARM MOUNTED	EACH	2
88102717 PEDESTRIAN SIGNAL HEAD, LED, 1-FACE, BRACKET MOUNTED WITH COUNTDOWN TIMER	EACH	2
88102747 PEDESTRIAN SIGNAL HEAD, LED, 2-FACE, BRACKET MOUNTED WITH COUNTDOWN TIMER	EACH	1
88200210 TRAFFIC SIGNAL BACKPLATE, LOUVERED, ALUMINUM	EACH	8
88500100 INDUCTIVE LOOP DETECTOR	EACH	8
88600100 DETECTOR LOOP, TYPE I	FOOT	1210
88700200 LIGHT DETECTOR	EACH	2
88700300 LIGHT DETECTOR AMPLIFIER	EACH	1
88800100 PEDESTRIAN PUSH-BUTTON	EACH	4
89000100 TEMPORARY TRAFFIC SIGNAL INSTALLATION	EACH	1
89100400 ILLUMINATED SIGN, LED	EACH	4
89502300 REMOVE ELECTRIC CABLE FROM CONDUIT	FOOT	4250
89502375 REMOVE EXISTING TRAFFIC SIGNAL EQUIPMENT	EACH	1
89502385 REMOVE EXISTING CONCRETE FOUNDATION	EACH	8
89502380 REMOVE EXISTING HANDHOLE	EACH	8
89502382 REMOVE EXISTING DOUBLE HANDHOLE	EACH	1
Z0073510 TEMPORARY TRAFFIC SIGNAL TIMING	EACH	1
X8730250 ELECTRIC CABLE IN CONDUIT, NO. 20 3/C, TWISTED, SHIELDED	FOOT	370



PHASE DESIGNATION DIAGRAM



CABLE PLAN LEGEND
 (NOTE: SEE DISTRICT 1 STANDARD TRAFFIC SIGNAL DESIGN DETAILS SHEET FOR FULL LEGEND)

North St LED INTERNALLY ILLUMINATED STREET NAME SIGNS

PROPOSED EMERGENCY VEHICLE PREEMPTORS	
EMERGENCY VEHICLE PREEMPTOR	3 4
MOVEMENT	↘ ↗

EMERGENCY VEHICLE PREEMPTION SEQUENCE

I.D.O.T. TRAFFIC SIGNAL INSTALLATION ELECTRICAL SERVICE REQUIREMENTS					TOTAL WATTAGE
TYPE	NO. LAMPS	WATTAGE INCAND.	LED	%OPERATION	
SIGNAL (RED)	12		17	0.50	102.00
(YELLOW)	12		25	0.25	75.00
(GREEN)	12		15	0.25	45.00
ARROW	12		12	0.10	14.40
PED. SIGNAL	4		25	1.00	100.00
CONTROLLER	1	100		1.00	100.00
ILLUM. SIGN	4		90	0.50	180.00
VIDEO DET.	0		150	1.00	0
LUMINAIRE	0	250		0.50	0
FLASHER				0.50	-
TOTAL =					616.40

ENERGY COSTS TO:
 VILLAGE OF PARK FOREST
 350 VICTORY DRIVE
 PARK FOREST, ILLINOIS 60466
 ENERGY SUPPLY CONTACT: VALERIE MURPHY
 PHONE: (708) 235-2346
 COMPANY: COM ED



DESIGNED - JUF	REVISED -
DRAWN - MAC	REVISED -
CHECKED - TAO	REVISED -
DATE - 10/31/11	FILE - 060670-PH2-ts-cable-3-NORTH.shp

**STATE OF ILLINOIS
 ORCHARD DRIVE IMPROVEMENTS**

**TRAFFIC SIGNAL CABLE PLAN,
 PHASE DESIGNATION DIAGRAM AND SCHEDULE OF QUANTITIES
 ORCHARD DRIVE AND NORTH STREET**

SCALE: NONE STA. TO STA.

F.A.U. RTE.	SECTION	COUNTY	TOTAL SHEETS	SHEET NO.
2836	06-00090-00-FP	COOK	200	124
FED. ROAD DIST. NO. 1 ILLINOIS FED. AID PROJECT			M-80036611	

COPYRIGHT © 2011 BY BAXTER & WOODMAN, INC.
 ALL RIGHTS RESERVED.
 LICENSE NO. 06-00090-00-FP-124-111
 ILL. STATE BOARD OF PROFESSIONAL ENGINEERING
 LICENSE NO. 06-00090-00-FP-124-111
 ILL. STATE BOARD OF PROFESSIONAL ENGINEERING
 LICENSE NO. 06-00090-00-FP-124-111